



The Council of
Independent Colleges

Key Indicators Tool (KIT)

PART A

2022

Sample University_9

Prepared by The Austen Group,
a Division of Ruffalo Noel Levitz

Sponsored by



CIC KEY INDICATORS TOOL 2022

PART A: STUDENTS AND FACULTY

NATIONAL AND WEST REGION

Sample University_9

SECTION	TAB NAME	PAGE
INTRODUCTION	INTRODUCTION	1-4
CIC BENCHMARKING SERVICES	SERVICES	5
KIT TRENDS:		
STUDENTS	STUDENTS TRENDS	6
FACULTY	FACULTY TRENDS	7
 STUDENTS		
1 Total Fall Enrollment		
By Region	1R ENROLL	8
By Financial Resources	1F ENROLL	9
By Enrollment Size	1S ENROLL	10
By Carnegie Classification	1C ENROLL	11
2 First-Year Enrollment		
By Region	2R FY ENROLL	12
By Financial Resources	2F FY ENROLL	13
By Enrollment Size	2S FY ENROLL	14
By Carnegie Classification	2C FY ENROLL	15
3 Admissions Yield Rate (%)		
By Region	3R ADMIT YIELD	16
By Financial Resources	3F ADMIT YIELD	17
By Enrollment Size	3S ADMIT YIELD	18
By Carnegie Classification	3C ADMIT YIELD	19
4 Retention Rate (%)		
By Region	4R RETENTION	20
By Financial Resources	4F RETENTION	21
By Enrollment Size	4S RETENTION	22
By Carnegie Classification	4C RETENTION	23
5 Graduation Rate (%)		
By Region	5R GRAD RATE	24
By Financial Resources	5F GRAD RATE	25
By Enrollment Size	5S GRAD RATE	26
By Carnegie Classification	5C GRAD RATE	27

FACULTY

6 Student/Faculty Ratio

By Region	6R STUDENT FAC	28
By Financial Resources	6F STUDENT FAC	29
By Enrollment Size	6S STUDENT FAC	30
By Carnegie Classification	6C STUDENT FAC	31

7 Part-Time Faculty (%)

By Region	7R PT FAC	32
By Financial Resources	7F PT FAC	33
By Enrollment Size	7S PT FAC	34
By Carnegie Classification	7C PT FAC	35

8 Assistant Professor Average Salary (\$)

By Region	8R ASST PROF	36
By Financial Resources	8F ASST PROF	37
By Enrollment Size	8S ASST PROF	38
By Carnegie Classification	8C ASST PROF	39

9 Associate Professor Average Salary (\$)

By Region	9R ASSOC PROF	40
By Financial Resources	9F ASSOC PROF	41
By Enrollment Size	9S ASSOC PROF	42
By Carnegie Classification	9C ASSOC PROF	43

10 Full Professor Average Salary (\$)

By Region	10R PROF	44
By Financial Resources	10F PROF	45
By Enrollment Size	10S PROF	46
By Carnegie Classification	10C PROF	47

APPENDIX

Data Information: Definitions, IPEDS Sources, and Formulas

[APPENDIX A](#)

48-50

Note: The individual pages for each indicator are identified on the tabs as "R" for region; "F" for financial resources; "S" for enrollment size; and "C" for Carnegie classification.

INTRODUCTION

The Key Indicators Tool (KIT) was developed for the Council of Independent Colleges (CIC) by the Austen Group in 2004. This annual benchmarking report provides 20 indicators of institutional performance for small and mid-sized private not-for-profit colleges and universities. Part A covers student information (enrollment, recruitment, progression) and information related to the faculty. Part B covers a wide range of financial information, such as tuition revenue and financial aid, as well as resources and expenditures. The KIT benchmarking report is an important component of CIC's data initiatives, designed to enhance institutional effectiveness and decision making. This confidential resource is prepared for the exclusive use of CIC member presidents, who in turn may choose to share some or all of the report with key staff, board members, or other constituents. Originally developed with support from the William Randolph Hearst Foundations, CIC gratefully acknowledges Ruffalo Noel Levitz's continued financial support of CIC's benchmarking reports.

Data

The KIT uses data from the Integrated Postsecondary Education Data System (IPEDS), the major national source of publicly available information on postsecondary institutions, provided by the U.S. Department of Education's National Center for Education Statistics. The KIT dataset contains information on nearly 750 four-year, private not-for-profit colleges and universities belonging to five Basic Carnegie Classification categories that represent 81 percent of CIC's membership: Baccalaureate Colleges–Diverse Fields, Baccalaureate Colleges–Arts & Sciences, Master's Colleges and Universities (smaller programs), Master's Colleges and Universities (medium programs), and Master's Colleges and Universities (larger programs). Institutions are identified using the new 2021 Carnegie Classification. As a result, 59 institutions are new to the basic database (21 MA, 38 BA). Sixteen institutions are no longer in the database, primarily because of closures. The major change in the 2021 classification for CIC institutions is that the percentage in the doctoral categories increased from 12.5% to 16% of all members. Only institutions with complete data for all five years of comparison are included in each table and chart.

Beginning with the 2021 KIT, CIC has used the IPEDS "Instructional, research and public service FTE staff" and "Part-time instructional, research and public service" variables for indicators Student/Faculty Ratio (Key Indicator 6) and Part-time Faculty (Key Indicator 7). Previously CIC used "Instructional staff, primarily instruction, Full-time and Part-time." As a result, the KIT report will rely on the IPEDS calculation for instructional FTE and a broader definition for instructional staff. For the vast majority of CIC institutions this will make no difference, but for a few it will result in a more useful measure of student-faculty ratio and percentage of part-time faculty.

Data from IPEDS were not altered nor were missing values imputed unless corrected information was provided to CIC directly from an institution. CIC member institutions with incomplete IPEDS data for the most recent year were given the opportunity to submit data prior to the 2022 KIT report's update. In situations where some data for an institution were unavailable, the tables that present the institution's data contain blank cells and the data were not plotted on that indicator's charts.

Format and Analyses

The KIT provides an individually customized report for each institution with regional and national comparisons over a five-year period based on four sorting criteria: region, financial resources, enrollment size, and 2021 Basic Carnegie Classification. Four pages or worksheets are devoted to each of the 20 indicators, one page for each sorting criterion. Each page contains two charts: a national comparison and a regional comparison.

Individually Customized. A customized KIT has been prepared for each CIC member college and university. Each institution's unique data are plotted against national and regional backdrops. On pages presenting comparisons by financial resources, enrollment size, and Carnegie classification, a box in the upper right corner indicates the institution's corresponding category. Your institution's data are plotted on the charts in bright yellow.

Adjusting Charts. There may be times when the trend line for your institution does not appear because it falls below the minimum amount selected for a particular chart. You can rescale the chart by first clicking on the y-axis to the left of the chart to select it. Then right click and a Format Axis box will appear on the right side of the page. Under Axis Options and Bounds, you will see the Minimum option with a number to the right, which is the current setting for the chart. Simply replace that number with one that will include your data and either hit enter or click back on the Excel worksheet.

Five-Year Trends. To understand how an institution has performed over time and to indicate the direction of a trend, the charts cover five-year periods. Indicators 1-11 cover academic year 2016-2017 through academic year 2020-2021. Indicators 12-20 cover academic year 2015-2016 through academic year 2019-2020. In every case, the most recent IPEDS data are used. When data are presented as whole numbers, a five-year percentage change is calculated.

Medians versus Means. The KIT uses national and regional median values (identical to the 50th percentile). The advantage of using median values instead of the mean (average) is that the median is less influenced by high or low extremes, thus providing a more meaningful mid-point for comparative

Four Sorting Criteria. The 20 indicators are presented according to four criteria: region of the country, financial resources, enrollment size, and 2021 Basic Carnegie Classification. The individual pages for each indicator are identified on the Excel tabs as "R" for region; "F" for financial resources; "S" for enrollment size; and "C" for Carnegie classification.

1. **Region:** Each institution is located in one of the six regional categories as outlined below. These regions were selected to reflect the distribution and affinity of CIC member institutions and are not identical to those assigned in IPEDS.

Region	State
Far West	Alaska, California, Hawaii, Nevada, Oregon, Washington
Mid East	Delaware, District of Columbia, Maryland, New Jersey, New York, Pennsylvania
Midwest	Illinois, Indiana, Iowa, Michigan, Minnesota, Missouri, Ohio, Wisconsin
New England	Connecticut, Maine, Massachusetts, New Hampshire, Rhode Island, Vermont
Southeast	Alabama, Arkansas, Florida, Georgia, Kentucky, Louisiana, Mississippi, North Carolina, South Carolina, Tennessee, Virginia, West Virginia
West	Arizona, Colorado, Idaho, Kansas, Montana, Nebraska, New Mexico, North Dakota, Oklahoma, South Dakota, Texas, Utah, Wyoming

2. **Financial Resource Quartile:** Each institution was placed in one of four quartiles based on an institution's financial resources. The financial resource measure was calculated by converting two equally weighted indicators: *Net Tuition Revenue per Student* (Key Indicator 15) and *Endowment Assets per Student* (Key Indicator 18). An average of the three most recent years for this calculation is used to create a percentile rank of all institutions in the dataset. Each institution was then assigned to a national and regional quartile based on the distribution of the KIT dataset for the most recent year.

3. Enrollment Size: Institution size uses four enrollment categories: (1) fewer than 1,000 students; (2) 1,000 to 2,000 students; (3) greater than 2,000 to 3,000 students; and (4) greater than 3,000 students. The most recent year's fall full-time equivalent (FTE) enrollment was used to determine size.

4. 2021 Basic Carnegie Classification: The KIT provides comparisons based upon the following five basic Carnegie classifications established in 2005 and revised in 2021: Baccalaureate Colleges–Diverse Fields, Baccalaureate Colleges–Arts & Sciences, Master's Colleges and Universities (smaller programs), Master's Colleges and Universities (medium programs), and Master's Colleges and Universities (larger programs). The classification groups comprise 81 percent of CIC's membership. For additional information about the 2021 Basic Carnegie Classifications, including definitions of various categories, visit:

<http://carnegieclassifications.iu.edu/>

Distribution. The following table shows the relative distribution of institutions in the KIT dataset within each region by national financial resource quartile, enrollment size category, and Carnegie classification.

	Financial Resources		Enrollment Size		Carnegie Classification	
		%		%		%
Far West	Quartile 1 (top)	41%	>3,000	14%	MA-Larger	18%
	Quartile 2	28%	2,001-3,000	8%	MA-Medium	21%
	Quartile 3	17%	1,000-2,000	37%	MA-Smaller	18%
	Quartile 4 (bottom)	14%	<1,000	41%	BA-Arts & Sciences	28%
					BA-Diverse Fields	14%
Mid East	Quartile 1 (top)	34%	>3,000	18%	MA-Larger	31%
	Quartile 2	30%	2,001-3,000	26%	MA-Medium	16%
	Quartile 3	25%	1,000-2,000	37%	MA-Smaller	11%
	Quartile 4 (bottom)	11%	<1,000	19%	BA-Arts & Sciences	30%
					BA-Diverse Fields	12%
Midwest	Quartile 1 (top)	24%	>3,000	14%	MA-Larger	21%
	Quartile 2	28%	2,001-3,000	18%	MA-Medium	15%
	Quartile 3	23%	1,000-2,000	41%	MA-Smaller	14%
	Quartile 4 (bottom)	25%	<1,000	27%	BA-Arts & Sciences	27%
					BA-Diverse Fields	24%
New England	Quartile 1 (top)	46%	>3,000	23%	MA-Larger	30%
	Quartile 2	24%	2,001-3,000	24%	MA-Medium	13%
	Quartile 3	21%	1,000-2,000	31%	MA-Smaller	13%
	Quartile 4 (bottom)	10%	<1,000	21%	BA-Arts & Sciences	34%
					BA-Diverse Fields	10%
Southeast	Quartile 1 (top)	13%	>3,000	7%	MA-Larger	10%
	Quartile 2	18%	2,001-3,000	11%	MA-Medium	11%
	Quartile 3	28%	1,000-2,000	42%	MA-Smaller	13%
	Quartile 4 (bottom)	42%	<1,000	39%	BA-Arts & Sciences	31%
					BA-Diverse Fields	36%
West	Quartile 1 (top)	11%	>3,000	7%	MA-Larger	20%
	Quartile 2	25%	2,001-3,000	10%	MA-Medium	16%
	Quartile 3	33%	1,000-2,000	38%	MA-Smaller	13%
	Quartile 4 (bottom)	31%	<1,000	44%	BA-Arts & Sciences	8%
					BA-Diverse Fields	43%
National			>3,000	13%	MA-Larger	20%
			2,001-3,000	17%	MA-Medium	15%
			1,000-2,000	39%	MA-Smaller	13%
			<1,000	32%	BA-Arts & Sciences	27%
					BA-Diverse Fields	25%

Appendix. At the end of each part of the report is an appendix that defines each indicator, detailing the source of the IPEDS data utilized, and the formulas used to calculate ratios and other measures.

The IPEDS Data Feedback Report

Each fall the National Center for Education Statistics sends to college and university presidents a summary benchmarking report that compares IPEDS data from the most recent year for their institution to a select group of similar colleges and universities. This Data Feedback Report (DFR) may be a useful companion to CIC's Key Indicators Tool (KIT) report. Data for both reports come from the same source, although not all of the indicators are identical. Furthermore, the DFR provides data for only the most recent reporting year, whereas the KIT presents trends over the most recent five years. The Data Feedback Report for any Title IV participating institution is available on the IPEDS website:

<http://nces.ed.gov/ipeds/>

The Council of Independent Colleges

The Council of Independent Colleges (CIC) is an association of 762 nonprofit independent colleges and universities, state-based councils of independent colleges, and other higher education affiliates, that works to support college and university leadership, advance institutional excellence, and enhance public understanding of independent higher education's contributions to society. CIC is the major national organization that focuses on services to leaders of independent colleges and universities and state-based councils. CIC offers conferences, seminars, publications, and other programs and services that help institutions improve educational quality, administrative and financial performance, student outcomes, and institutional visibility. It conducts the largest annual conferences of college and university presidents and of chief academic officers in the United States. Founded in 1956, CIC is headquartered at One Dupont Circle in Washington, DC. For more information, visit

www.cic.edu

For questions or comments about CIC's benchmarking services, including the Financial Indicators Tool (FIT), please contact Jason Rivera, CIC Director of Strategic Research, by phone at (202) 466-7230 or by email at

jrivera@cic.edu

RNL

Ruffalo Noel Levitz (RNL) is the leading provider of higher education enrollment, student success, and fundraising solutions. The firm serves more than 1,900 colleges and universities through data-driven solutions focused on the entire lifecycle of enrollment and fundraising, assuring students find the right program, graduate on time, secure their first job in their chosen field, and give back to support the next generation. With a deep knowledge of the industry, RNL provides institutions the ability to scale their efforts by tapping into a community of support and resources. To learn more, visit:

www.RuffaloNL.com

CIC BENCHMARKING SERVICES

CIC is pleased to offer the following benchmarking services to enhance the Key Indicators Tool (KIT).

Comparison Group KIT

Fee: \$500

This service provides CIC members a customized KIT report with the 25th, 50th, and 75th percentiles for each indicator for either one or two comparison groups selected by the institution. Customized groups permit more refined comparisons that may be useful for particular strategic objectives. Comparison groups may range in size from five to 25, though groups of 10 to 15 are recommended. Selecting two groups provides for multiple comparisons, perhaps of a peer and an aspirant group (see “Guidelines for Selecting Comparison Groups” available on the CIC website). Comparison institutions may be selected from among private, not-for-profit, four-year colleges or universities in the United States.

Online Consultations

Fee: \$650 (KIT only)

Fee: \$950 (KIT and FIT)

CIC has arranged with Mike Williams, president of the Austen Group, to provide web-based consultations using an institution’s KIT report with senior staff, boards, or faculty groups. The interactive online session employs voice and shared graphics, allowing participants to engage in substantive conversation about the institution's concerns and goals in light of the KIT data. This service provides a cost-effective approach to enhancing the value of the KIT for your institution. It also is possible to extend what is generally a one-hour consultation to 90 minutes to include the companion Financial Indicators Tool (FIT) in the presentation. The fee for a consultation using both the KIT and the FIT is \$950. Consultations should be scheduled at least four weeks in advance.

For additional information or to request any of these benchmarking services, please visit:

www.cic.edu/BenchmarkingServices

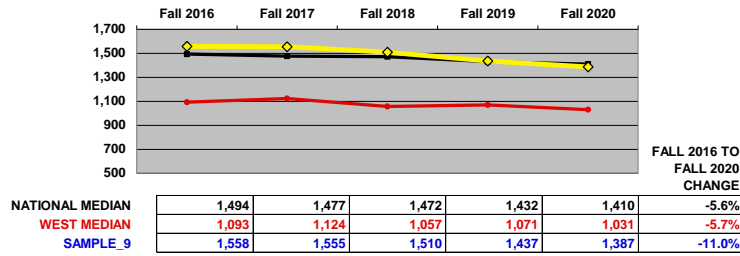
Or contact Jason Rivera, CIC Director of Strategic Research, by phone at (202) 466-7230 or by email:

jrivera@cic.edu

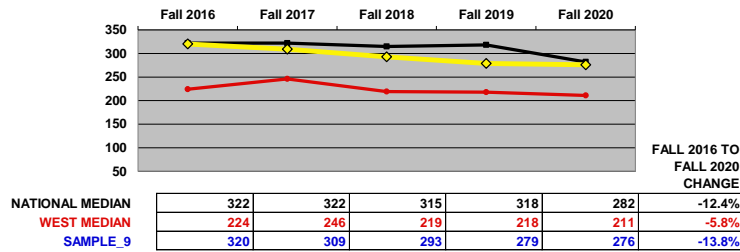
Sample University_9

KIT TRENDS: STUDENTS

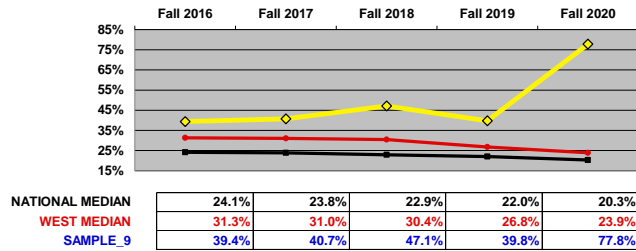
1) TOTAL FALL ENROLLMENT (FALL FTE)



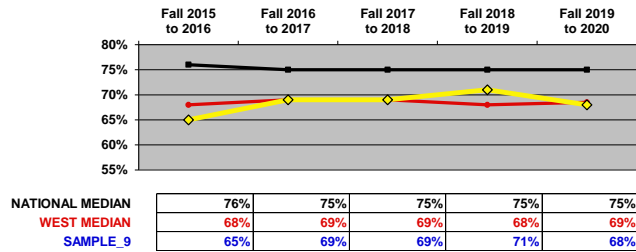
2) FIRST-YEAR ENROLLMENT (FULL-TIME UNDERGRADUATE)



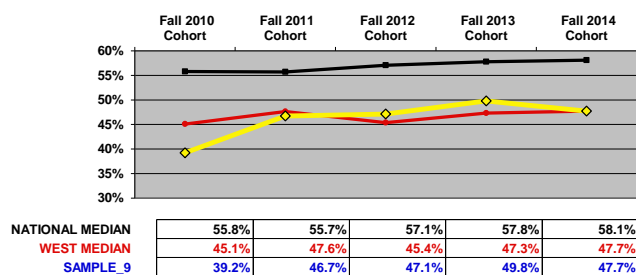
3) ADMISSIONS YIELD RATE (%) (ADMITTED TO ENROLLED)



4) RETENTION RATE (%) (FIRST TO SECOND YEAR)



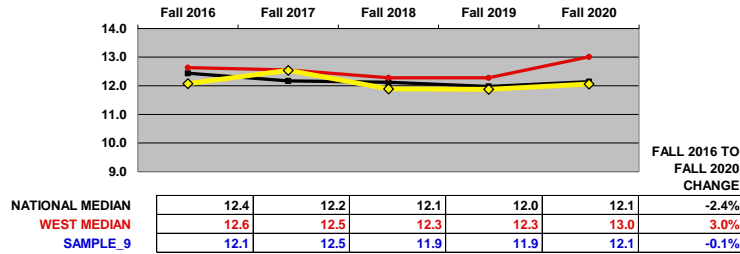
5) GRADUATION RATE (%) (SIX-YEAR COHORT RATE)



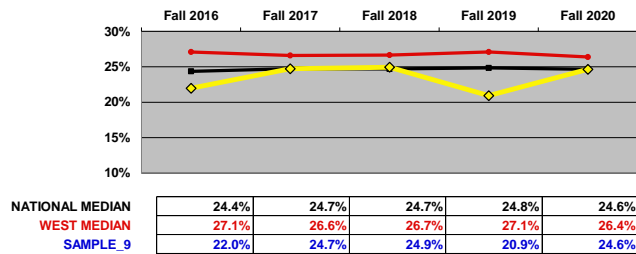
Sample University_9

KIT TRENDS: FACULTY

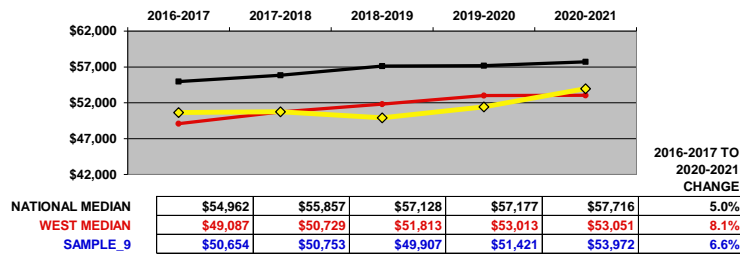
6) STUDENT/FACULTY RATIO



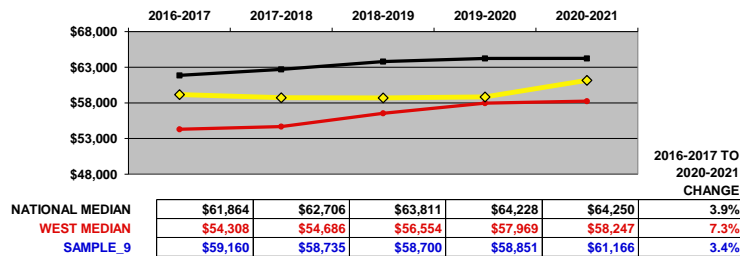
7) PART-TIME FACULTY (%)



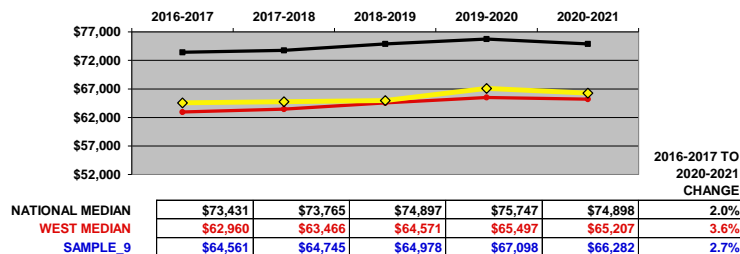
8) ASSISTANT PROFESSOR AVERAGE SALARY (\$) (EQUATED TO A 9-MONTH CONTRACT)



9) ASSOCIATE PROFESSOR AVERAGE SALARY (\$) (EQUATED TO A 9-MONTH CONTRACT)



10) PROFESSOR AVERAGE SALARY (\$) (EQUATED TO A 9-MONTH CONTRACT)

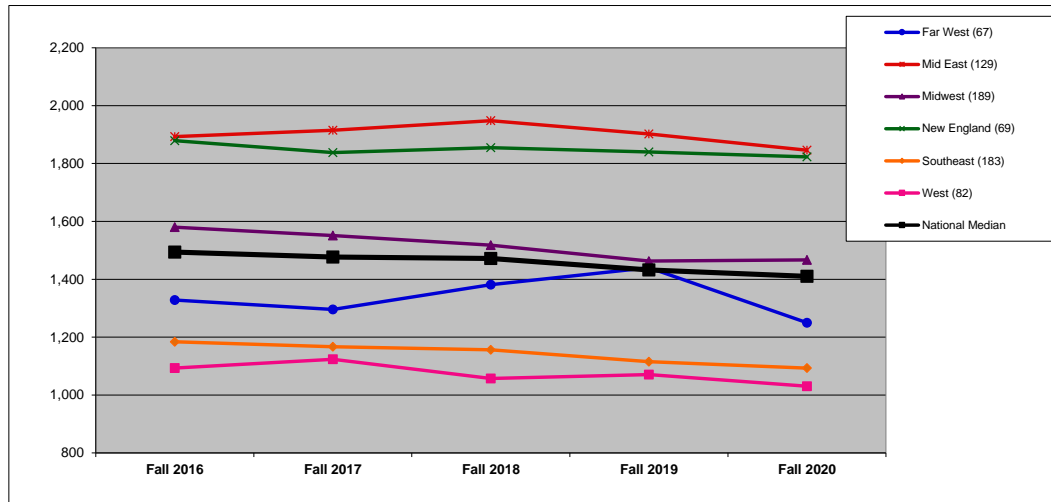


TOTAL FALL ENROLLMENT: BY REGION (1R)

DEFINITION: Total fall full-time equivalent (FTE) enrollment, including undergraduate, graduate, and first-professional students.

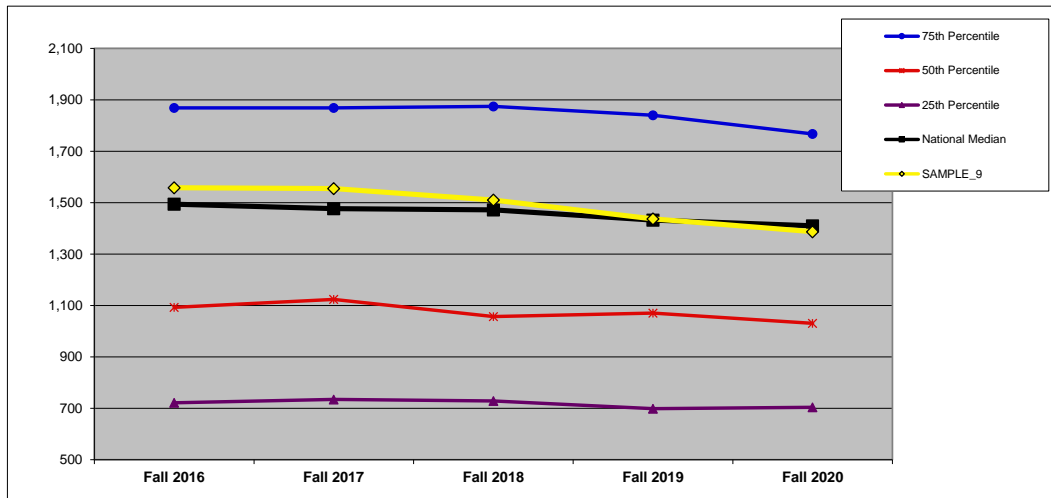
	Fall 2016	Fall 2017	Fall 2018	Fall 2019	Fall 2020	Y1 to Y5 Change
SAMPLE_9	1,558	1,555	1,510	1,437	1,387	-11.0%

NATIONAL (n=719). All data on this chart are presented as medians. See Introduction for description of regions.



	Fall 2016	Fall 2017	Fall 2018	Fall 2019	Fall 2020	Y1 to Y5 Change
Far West (67)	1,328	1,296	1,381	1,440	1,250	-5.9%
Mid East (129)	1,893	1,915	1,948	1,902	1,846	-2.5%
Midwest (189)	1,580	1,551	1,518	1,463	1,467	-7.2%
New England (69)	1,879	1,838	1,855	1,840	1,823	-3.0%
Southeast (183)	1,184	1,167	1,156	1,115	1,093	-7.7%
West (82)	1,093	1,124	1,057	1,071	1,031	-5.7%
National Median	1,494	1,477	1,472	1,432	1,410	-5.6%

WEST REGION (n=82). In addition to the median, which is the 50th percentile, this chart shows the 75th and 25th percentiles for the region.



	Fall 2016	Fall 2017	Fall 2018	Fall 2019	Fall 2020	Y1 to Y5 Change
75th Percentile	1,869	1,869	1,875	1,840	1,767	-5.4%
50th Percentile	1,093	1,124	1,057	1,071	1,031	-5.7%
25th Percentile	722	735	728	699	704	-2.5%
National Median	1,494	1,477	1,472	1,432	1,410	-5.6%
SAMPLE_9	1,558	1,555	1,510	1,437	1,387	-11.0%

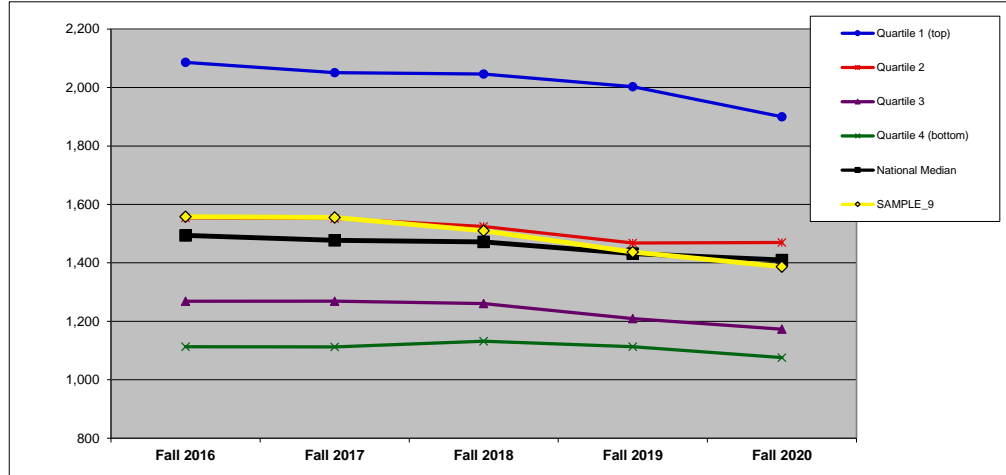
TOTAL FALL ENROLLMENT: BY FINANCIAL RESOURCES (1F)

DEFINITION: Total fall full-time equivalent (FTE) enrollment, including undergraduate, graduate, and first-professional students. (All national and regional data are presented as medians.)

	Fall 2016	Fall 2017	Fall 2018	Fall 2019	Fall 2020	Y1 to Y5 Change
SAMPLE_9	1,558	1,555	1,510	1,437	1,387	-11.0%

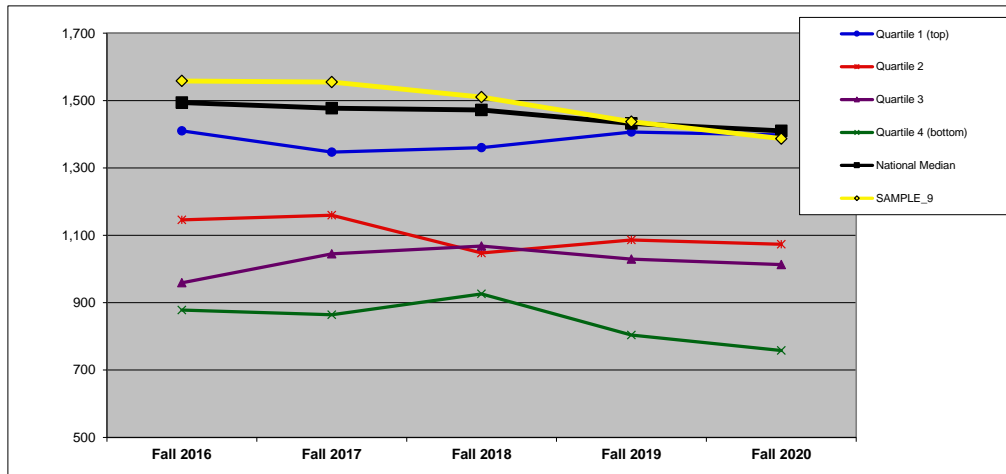
QUANTILES	
NATIONAL	3
REGIONAL	3

NATIONAL: FINANCIAL RESOURCES (n=699).



	Fall 2016	Fall 2017	Fall 2018	Fall 2019	Fall 2020	Y1 to Y5 Change
Quartile 1 (top)	2,086	2,051	2,046	2,003	1,900	-8.9%
Quartile 2	1,554	1,552	1,525	1,468	1,470	-5.4%
Quartile 3	1,269	1,269	1,261	1,209	1,173	-7.5%
Quartile 4 (bottom)	1,113	1,113	1,132	1,113	1,076	-3.3%
National Median	1,494	1,477	1,472	1,432	1,410	-5.6%
SAMPLE_9	1,558	1,555	1,510	1,437	1,387	-11.0%

WEST REGION: FINANCIAL RESOURCES (n=80).



	Fall 2016	Fall 2017	Fall 2018	Fall 2019	Fall 2020	Y1 to Y5 Change
Quartile 1 (top)	1,410	1,347	1,360	1,407	1,398	-0.9%
Quartile 2	1,146	1,160	1,048	1,086	1,074	-6.3%
Quartile 3	959	1,045	1,068	1,029	1,013	5.6%
Quartile 4 (bottom)	878	864	926	804	758	-13.7%
National Median	1,494	1,477	1,472	1,432	1,410	-5.6%
SAMPLE_9	1,558	1,555	1,510	1,437	1,387	-11.0%

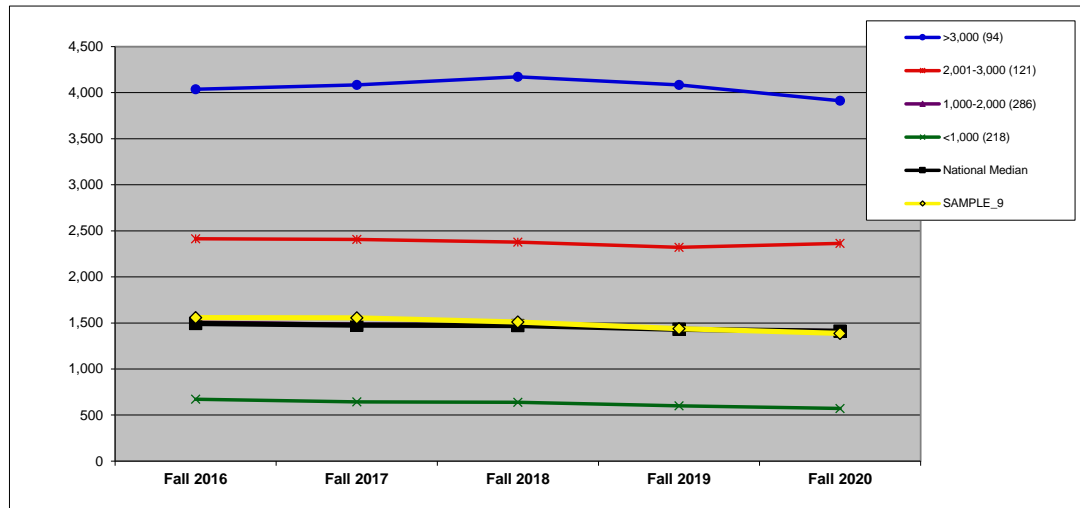
TOTAL FALL ENROLLMENT: BY ENROLLMENT SIZE (1S)

DEFINITION: Total fall full-time equivalent (FTE) enrollment, including undergraduate, graduate, and first-professional students. (All national and regional data are presented as medians.)

	Fall 2016	Fall 2017	Fall 2018	Fall 2019	Fall 2020	Y1 to Y5 Change
SAMPLE_9	1,558	1,555	1,510	1,437	1,387	-11.0%

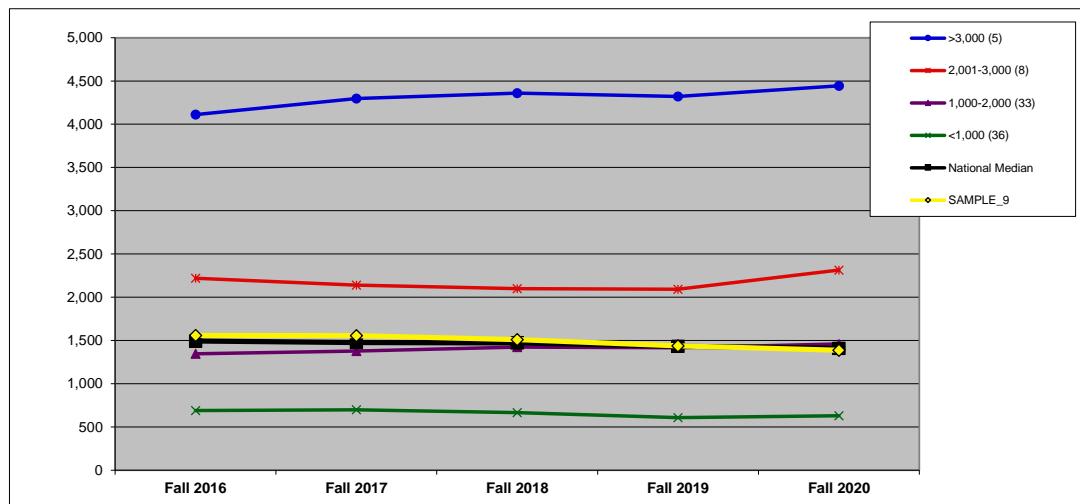
SIZE 1,000-2,000

NATIONAL: SIZE (n=719).



	Fall 2016	Fall 2017	Fall 2018	Fall 2019	Fall 2020	Y1 to Y5 Change
>3,000 (94)	4,037	4,086	4,172	4,084	3,912	-3.1%
2,001-3,000 (121)	2,414	2,407	2,378	2,321	2,363	-2.1%
1,000-2,000 (286)	1,510	1,486	1,479	1,434	1,415	-6.3%
<1,000 (218)	672	643	640	601	572	-14.9%
National Median	1,494	1,477	1,472	1,432	1,410	-5.6%
SAMPLE_9	1,558	1,555	1,510	1,437	1,387	-11.0%

WEST REGION: SIZE (n=82).



	Fall 2016	Fall 2017	Fall 2018	Fall 2019	Fall 2020	Y1 to Y5 Change
>3,000 (5)	4,111	4,298	4,360	4,321	4,444	8.1%
2,001-3,000 (8)	2,219	2,140	2,100	2,093	2,314	4.3%
1,000-2,000 (33)	1,346	1,378	1,423	1,416	1,460	8.5%
<1,000 (36)	691	699	667	608	630	-8.8%
National Median	1,494	1,477	1,472	1,432	1,410	-5.6%
SAMPLE_9	1,558	1,555	1,510	1,437	1,387	-11.0%

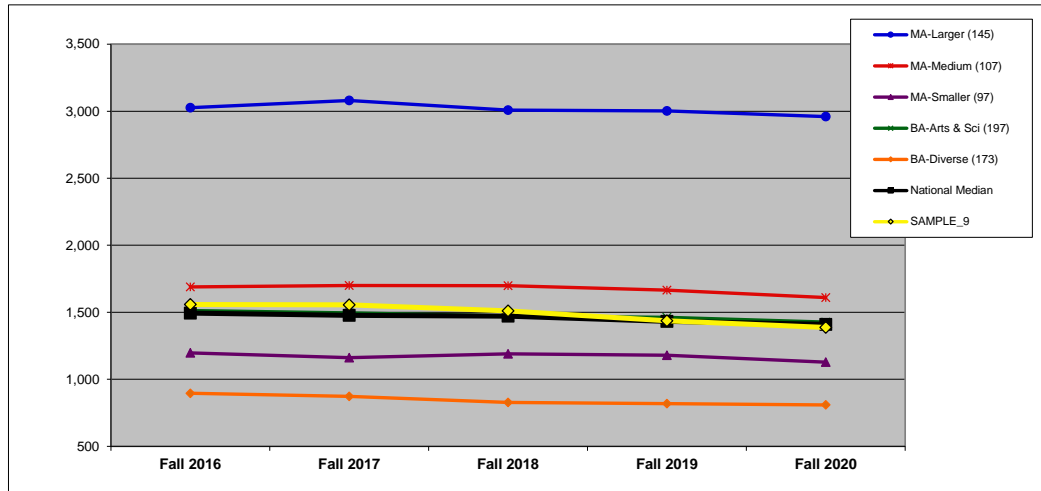
TOTAL FALL ENROLLMENT: BY CARNEGIE CLASSIFICATION (1C)

DEFINITION: Total fall full-time equivalent (FTE) enrollment, including undergraduate, graduate, and first-professional students. See Introduction for information on the Carnegie classifications. (All national and regional data are presented as medians.)

	Fall 2016	Fall 2017	Fall 2018	Fall 2019	Fall 2020	Y1 to Y5 Change
SAMPLE_9	1,558	1,555	1,510	1,437	1,387	-11.0%

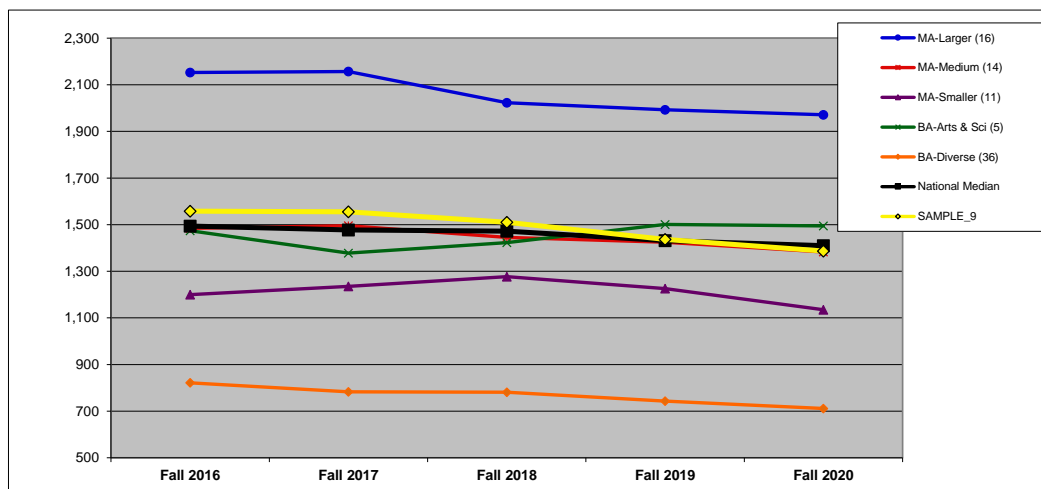
CARNEGIE MA-Medium

NATIONAL: CARNEGIE (n=719).



	Fall 2016	Fall 2017	Fall 2018	Fall 2019	Fall 2020	Y1 to Y5 Change
MA-Larger (145)	3,026	3,080	3,008	3,003	2,960	-2.2%
MA-Medium (107)	1,689	1,700	1,699	1,665	1,610	-4.7%
MA-Smaller (97)	1,197	1,162	1,190	1,179	1,128	-5.8%
BA-Arts & Sci (197)	1,513	1,496	1,473	1,463	1,427	-5.7%
BA-Diverse (173)	896	873	828	819	809	-9.7%
National Median	1,494	1,477	1,472	1,432	1,410	-5.6%
SAMPLE_9	1,558	1,555	1,510	1,437	1,387	-11.0%

WEST REGION: CARNEGIE (n=82).



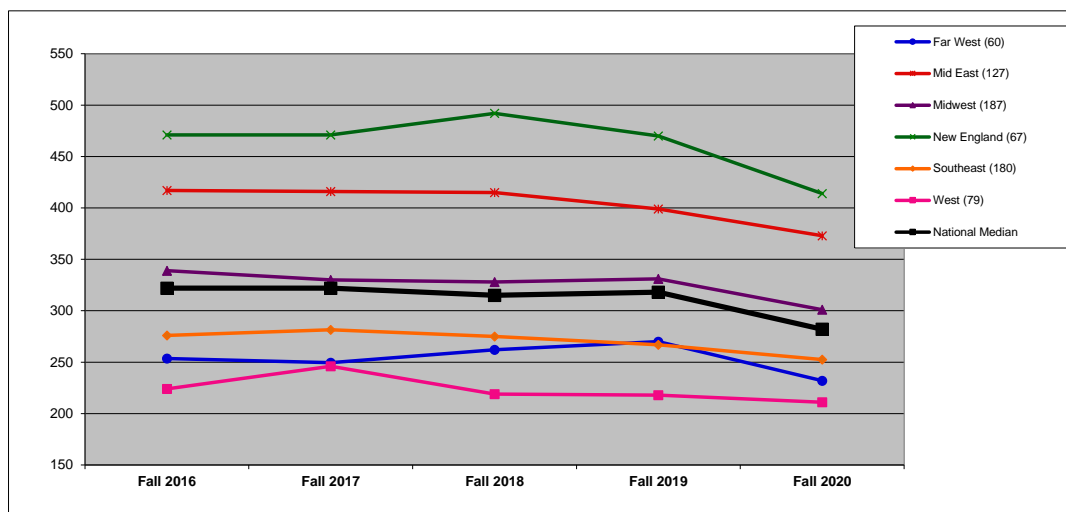
	Fall 2016	Fall 2017	Fall 2018	Fall 2019	Fall 2020	Y1 to Y5 Change
MA-Larger (16)	2,153	2,157	2,024	1,993	1,972	-8.4%
MA-Medium (14)	1,485	1,496	1,445	1,425	1,383	-6.8%
MA-Smaller (11)	1,200	1,235	1,277	1,226	1,135	-5.4%
BA-Arts & Sci (5)	1,474	1,378	1,423	1,501	1,495	1.4%
BA-Diverse (36)	822	783	782	744	712	-13.4%
National Median	1,494	1,477	1,472	1,432	1,410	-5.6%
SAMPLE_9	1,558	1,555	1,510	1,437	1,387	-11.0%

FIRST-YEAR ENROLLMENT: BY REGION (2R)

DEFINITION: Total fall full-time, first-time degree-seeking undergraduate students.

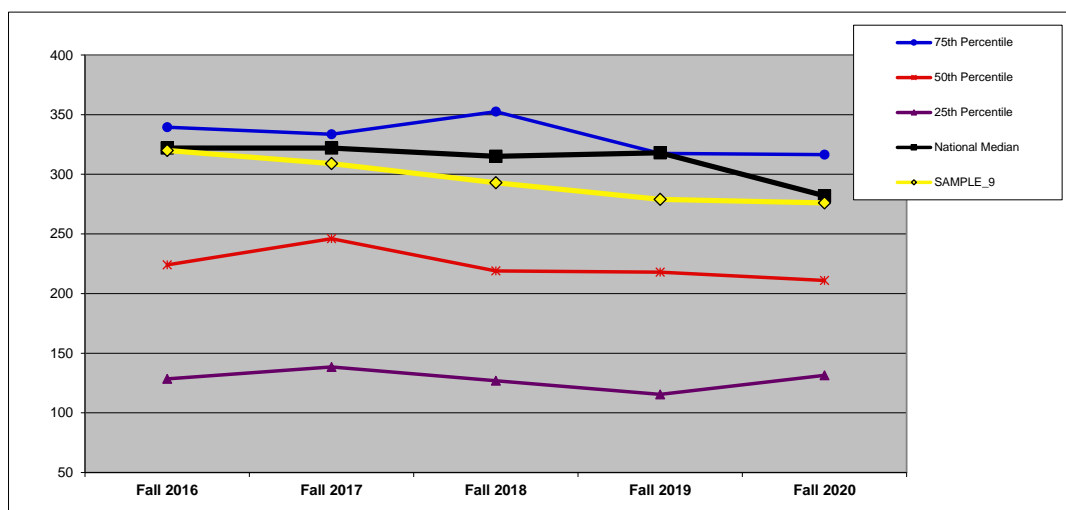
	Fall 2016	Fall 2017	Fall 2018	Fall 2019	Fall 2020	Y1 to Y5 Change
SAMPLE_9	320	309	293	279	276	-13.8%

NATIONAL (n=700). All data on this chart are presented as medians. See Introduction for description of regions.



	Fall 2016	Fall 2017	Fall 2018	Fall 2019	Fall 2020	Y1 to Y5 Change
Far West (60)	254	250	262	270	232	-8.5%
Mid East (127)	417	416	415	399	373	-10.6%
Midwest (187)	339	330	328	331	301	-11.2%
New England (67)	471	471	492	470	414	-12.1%
Southeast (180)	276	282	275	267	253	-8.5%
West (79)	224	246	219	218	211	-5.8%
National Median	322	322	315	318	282	-12.4%

WEST REGION (n=79). In addition to the median, which is the 50th percentile, this chart shows the 75th and 25th percentiles for the region.



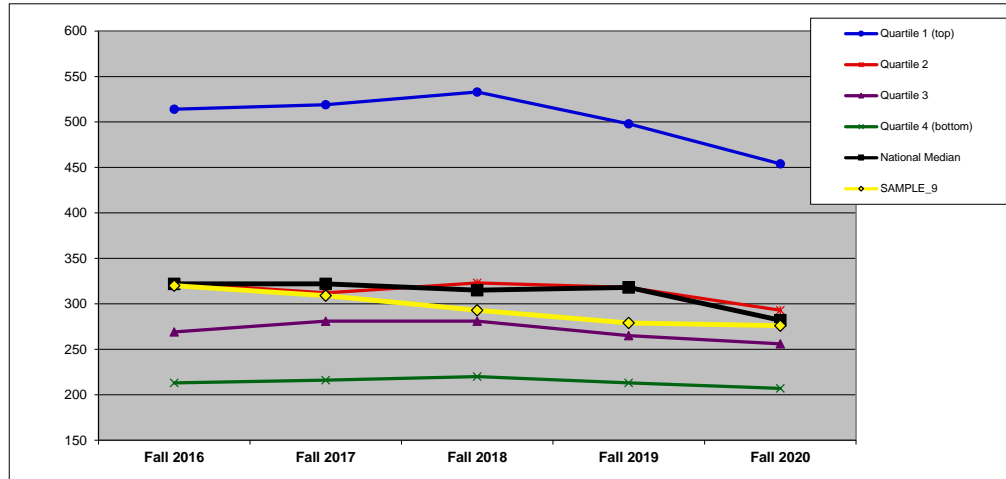
	Fall 2016	Fall 2017	Fall 2018	Fall 2019	Fall 2020	Y1 to Y5 Change
75th Percentile	340	334	353	318	317	-6.8%
50th Percentile	224	246	219	218	211	-5.8%
25th Percentile	129	139	127	116	132	2.3%
National Median	322	322	315	318	282	-12.4%
SAMPLE_9	320	309	293	279	276	-13.8%

FIRST-YEAR ENROLLMENT: BY FINANCIAL RESOURCES (2F)

DEFINITION: Total fall full-time, first-time degree-seeking undergraduate students. (All national and regional data are presented as medians.)

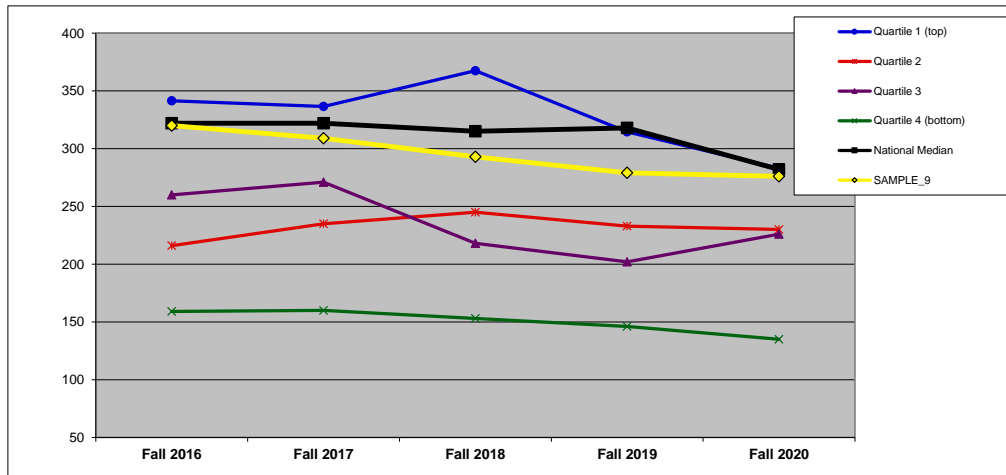
	Fall 2016	Fall 2017	Fall 2018	Fall 2019	Fall 2020	Y1 to Y5 Change		QUARTILES
SAMPLE_9	320	309	293	279	276	-13.8%	NATIONAL	3
							REGIONAL	3

NATIONAL: FINANCIAL RESOURCES (n=682).



	Fall 2016	Fall 2017	Fall 2018	Fall 2019	Fall 2020	Y1 to Y5 Change
Quartile 1 (top)	514	519	533	498	454	-11.7%
Quartile 2	323	312	323	318	293	-9.3%
Quartile 3	269	281	281	265	256	-4.8%
Quartile 4 (bottom)	213	216	220	213	207	-2.8%
National Median	322	322	315	318	282	-12.4%
SAMPLE_9	320	309	293	279	276	-13.8%

WEST REGION: FINANCIAL RESOURCES (n=77).



	Fall 2016	Fall 2017	Fall 2018	Fall 2019	Fall 2020	Y1 to Y5 Change
Quartile 1 (top)	342	337	368	315	283	-17.1%
Quartile 2	216	235	245	233	230	6.5%
Quartile 3	260	271	218	202	226	-13.1%
Quartile 4 (bottom)	159	160	153	146	135	-15.1%
National Median	322	322	315	318	282	-12.4%
SAMPLE_9	320	309	293	279	276	-13.8%

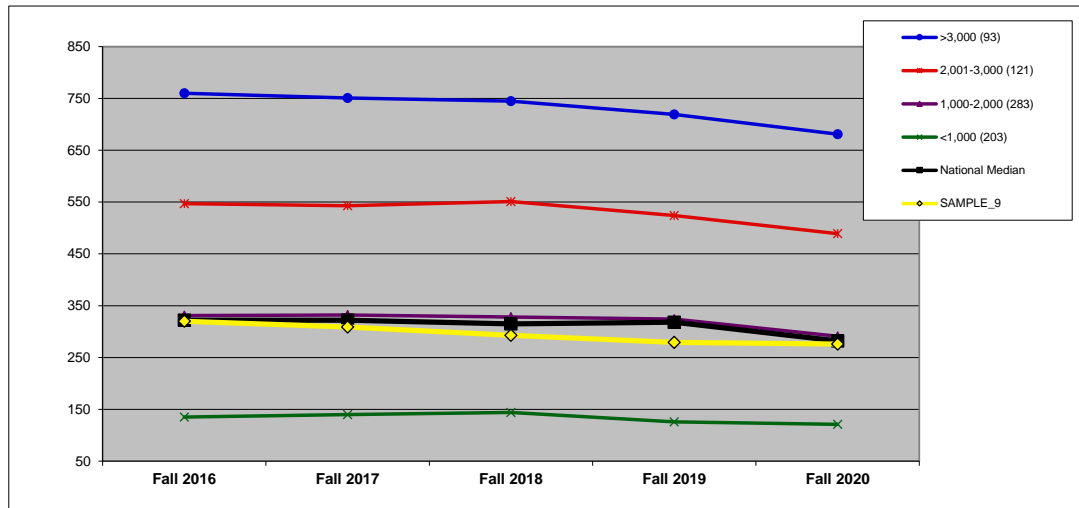
FIRST-YEAR ENROLLMENT: BY ENROLLMENT SIZE (2S)

DEFINITION: Total fall full-time, first-time degree-seeking undergraduate students. (All national and regional data are presented as medians.)

	Fall 2016	Fall 2017	Fall 2018	Fall 2019	Fall 2020	Y1 to Y5 Change
SAMPLE_9	320	309	293	279	276	-13.8%

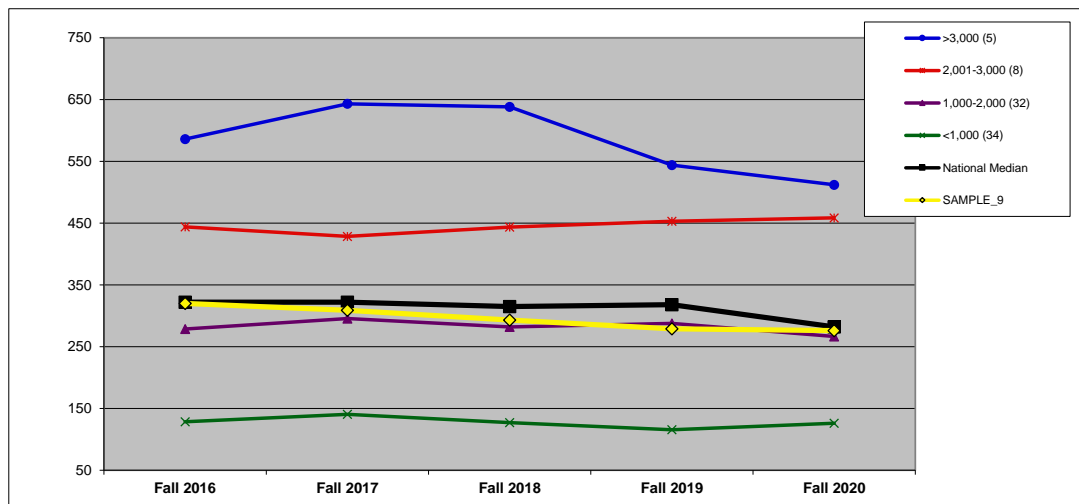
SIZE 1,000-2,000

NATIONAL: SIZE (n=700).



	Fall 2016	Fall 2017	Fall 2018	Fall 2019	Fall 2020	Y1 to Y5 Change
>3,000 (93)	760	751	745	719	681	-10.4%
2,001-3,000 (121)	547	543	551	524	489	-10.6%
1,000-2,000 (283)	331	332	328	324	291	-12.1%
<1,000 (203)	135	140	144	126	121	-10.4%
National Median	322	322	315	318	282	-12.4%
SAMPLE_9	320	309	293	279	276	-13.8%

WEST REGION: SIZE (n=79).



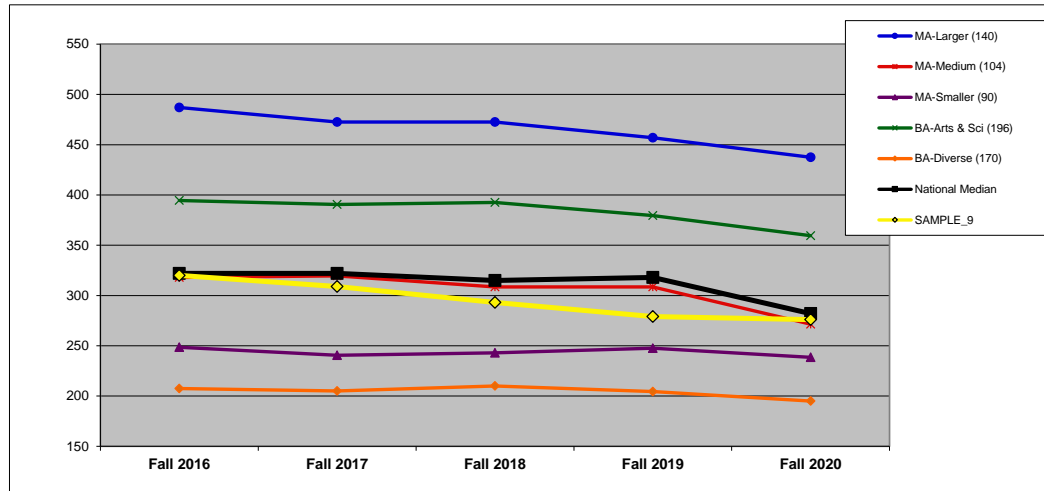
	Fall 2016	Fall 2017	Fall 2018	Fall 2019	Fall 2020	Y1 to Y5 Change
>3,000 (5)	586	643	638	544	512	-12.6%
2,001-3,000 (8)	444	429	444	453	459	3.3%
1,000-2,000 (32)	279	296	282	288	267	-4.3%
<1,000 (34)	129	141	127	116	126	-1.9%
National Median	322	322	315	318	282	-12.4%
SAMPLE_9	320	309	293	279	276	-13.8%

FIRST-YEAR ENROLLMENT: BY CARNEGIE CLASSIFICATION (2C)

DEFINITION: Total fall full-time, first-time degree-seeking undergraduate students. See Introduction for information on the Carnegie classifications. (All national and regional data are presented as medians.)

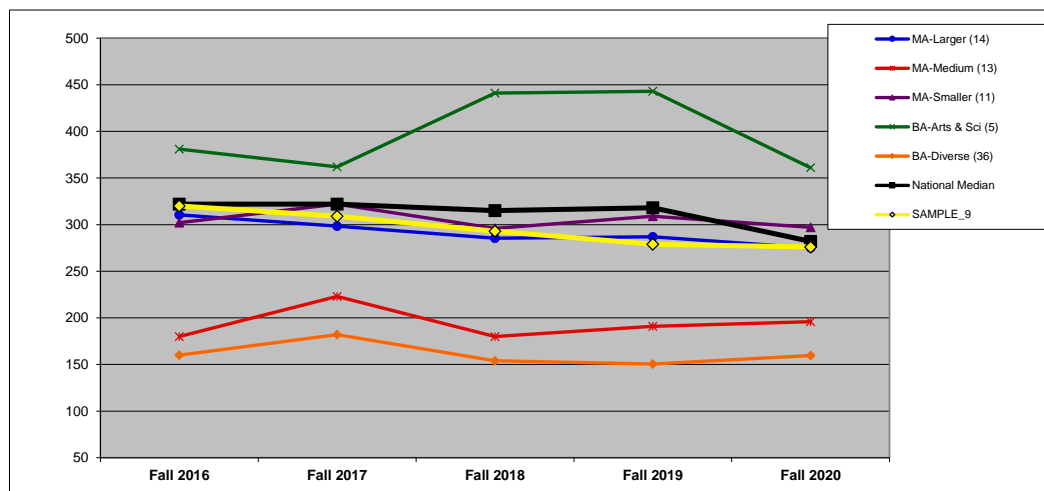
	Fall 2016	Fall 2017	Fall 2018	Fall 2019	Fall 2020	Y1 to Y5 Change	CARNEGIE
SAMPLE_9	320	309	293	279	276	-13.8%	MA-Medium

NATIONAL: CARNEGIE (n=700).



	Fall 2016	Fall 2017	Fall 2018	Fall 2019	Fall 2020	Y1 to Y5 Change
MA-Larger (140)	487	473	473	457	438	-10.2%
MA-Medium (104)	318	320	309	309	272	-14.6%
MA-Smaller (90)	249	241	243	248	239	-4.0%
BA-Arts & Sci (196)	395	391	393	380	360	-8.9%
BA-Diverse (170)	208	205	210	205	195	-6.0%
National Median	322	322	315	318	282	-12.4%
SAMPLE_9	320	309	293	279	276	-13.8%

WEST REGION: CARNEGIE (n=79).



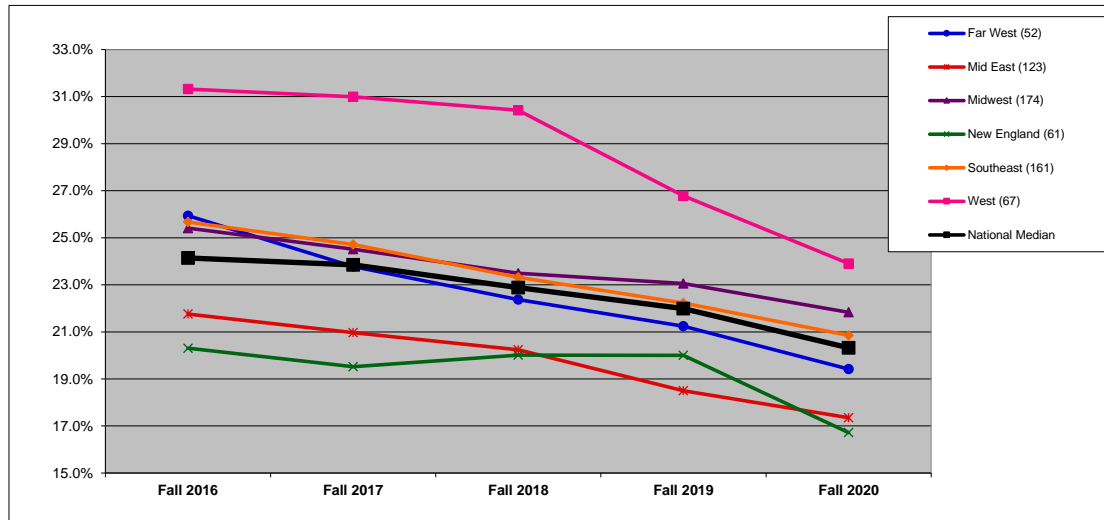
	Fall 2016	Fall 2017	Fall 2018	Fall 2019	Fall 2020	Y1 to Y5 Change
MA-Larger (14)	311	299	286	287	275	-11.4%
MA-Medium (13)	180	223	180	191	196	8.9%
MA-Smaller (11)	302	322	296	309	297	-1.7%
BA-Arts & Sci (5)	381	362	441	443	361	-5.2%
BA-Diverse (36)	160	182	154	151	160	-0.3%
National Median	322	322	315	318	282	-12.4%
SAMPLE_9	320	309	293	279	276	-13.8%

ADMISSIONS YIELD RATE (%): BY REGION (3R)

DEFINITION: Percentage of admitted students who enrolled.

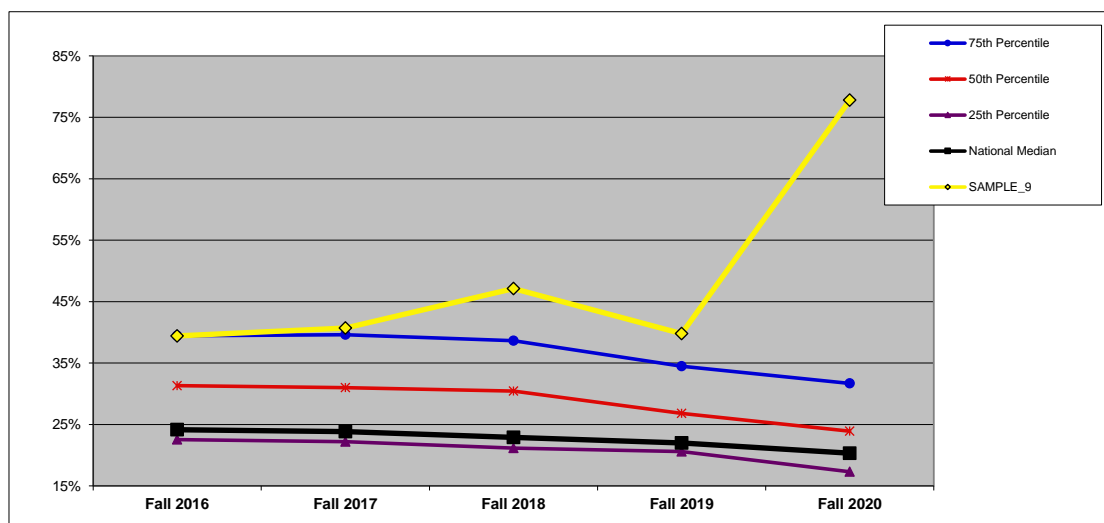
	Fall 2016	Fall 2017	Fall 2018	Fall 2019	Fall 2020
SAMPLE_9	39.4%	40.7%	47.1%	39.8%	77.8%

NATIONAL (n=638). All data on this chart are presented as medians. See Introduction for description of regions.



	Fall 2016	Fall 2017	Fall 2018	Fall 2019	Fall 2020
Far West (52)	25.9%	23.8%	22.4%	21.2%	19.4%
Mid East (123)	21.8%	21.0%	20.2%	18.5%	17.4%
Midwest (174)	25.4%	24.5%	23.5%	23.1%	21.8%
New England (61)	20.3%	19.5%	20.0%	20.0%	16.7%
Southeast (161)	25.7%	24.7%	23.3%	22.2%	20.9%
West (67)	31.3%	31.0%	30.4%	26.8%	23.9%
National Median	24.1%	23.8%	22.9%	22.0%	20.3%

WEST REGION (n=67). In addition to the median, which is the 50th percentile, this chart shows the 75th and 25th percentiles for the region.



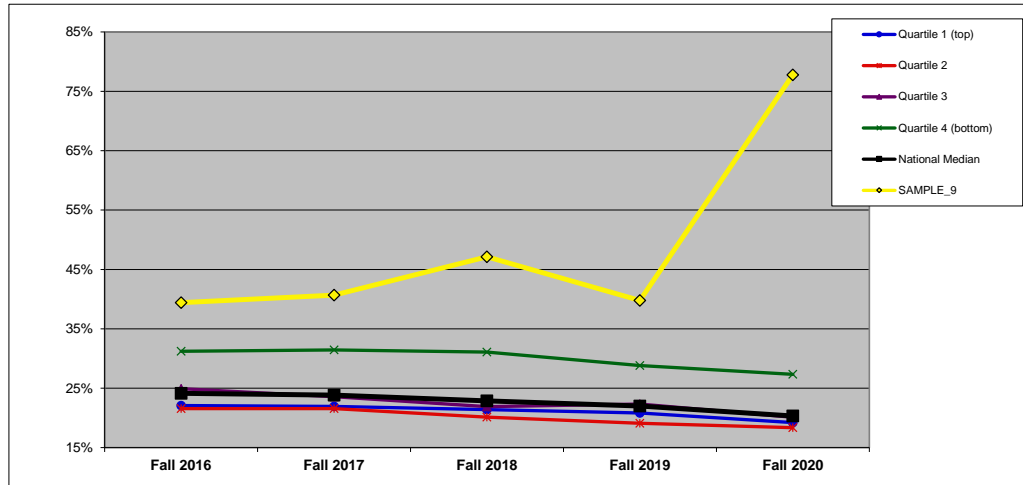
	Fall 2016	Fall 2017	Fall 2018	Fall 2019	Fall 2020
75th Percentile	31.3%	31.0%	30.4%	26.8%	23.9%
50th Percentile	24.1%	23.8%	22.9%	22.0%	20.3%
25th Percentile	22.5%	22.2%	21.1%	20.6%	17.3%
National Median	24.1%	23.8%	22.9%	22.0%	20.3%
SAMPLE_9	39.4%	40.7%	47.1%	39.8%	77.8%

ADMISSIONS YIELD RATE (%): BY FINANCIAL RESOURCES (3F)

DEFINITION: Percentage of admitted students who enrolled. (All national and regional data are presented as medians.)

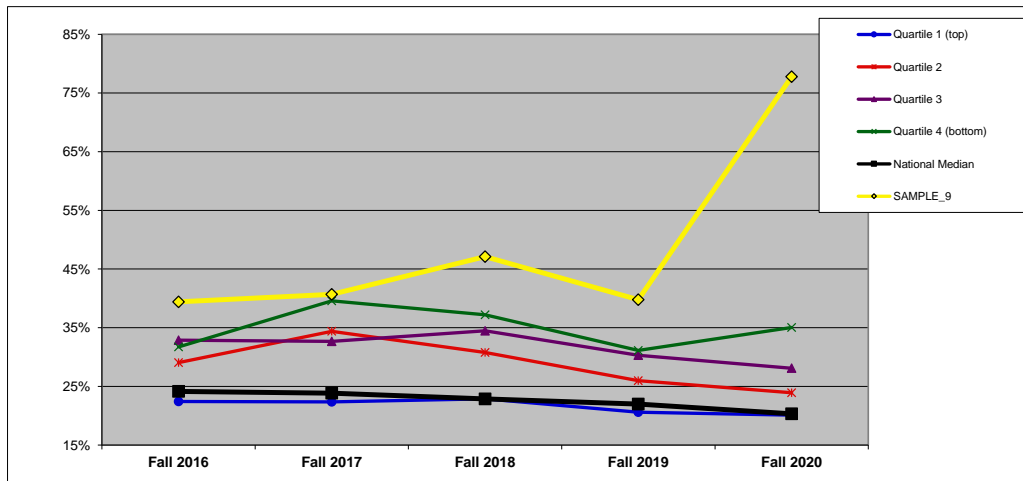
	QUARTILES				
	Fall 2016	Fall 2017	Fall 2018	Fall 2019	Fall 2020
SAMPLE_9	39.4%	40.7%	47.1%	39.8%	77.8%
NATIONAL	3				
REGIONAL	3				

NATIONAL: FINANCIAL RESOURCES (n=633).



	Fall 2016	Fall 2017	Fall 2018	Fall 2019	Fall 2020
Quartile 1 (top)	22.1%	21.9%	21.4%	20.8%	19.2%
Quartile 2	21.6%	21.6%	20.1%	19.1%	18.4%
Quartile 3	24.9%	23.6%	21.9%	22.3%	20.1%
Quartile 4 (bottom)	31.2%	31.4%	31.1%	28.8%	27.3%
National Median	24.1%	23.8%	22.9%	22.0%	20.3%
SAMPLE_9	39.4%	40.7%	47.1%	39.8%	77.8%

WEST REGION: FINANCIAL RESOURCES (n=67).



	Fall 2016	Fall 2017	Fall 2018	Fall 2019	Fall 2020
Quartile 1 (top)	22.4%	22.3%	22.9%	20.6%	20.1%
Quartile 2	29.0%	34.4%	30.8%	26.0%	23.9%
Quartile 3	32.9%	32.7%	34.5%	30.3%	28.1%
Quartile 4 (bottom)	31.7%	39.6%	37.2%	31.1%	35.0%
National Median	24.1%	23.8%	22.9%	22.0%	20.3%
SAMPLE_9	39.4%	40.7%	47.1%	39.8%	77.8%

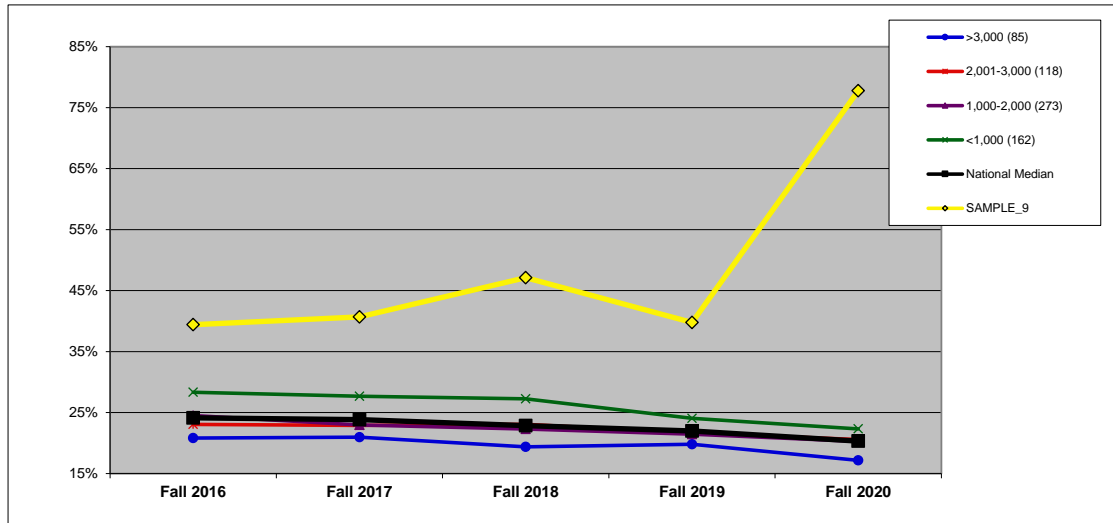
ADMISSIONS YIELD RATE (%): BY ENROLLMENT SIZE (3S)

DEFINITION: Percentage of admitted students who enrolled. (All national and regional data are presented as medians.)

	Fall 2016	Fall 2017	Fall 2018	Fall 2019	Fall 2020
SAMPLE_9	39.4%	40.7%	47.1%	39.8%	77.8%

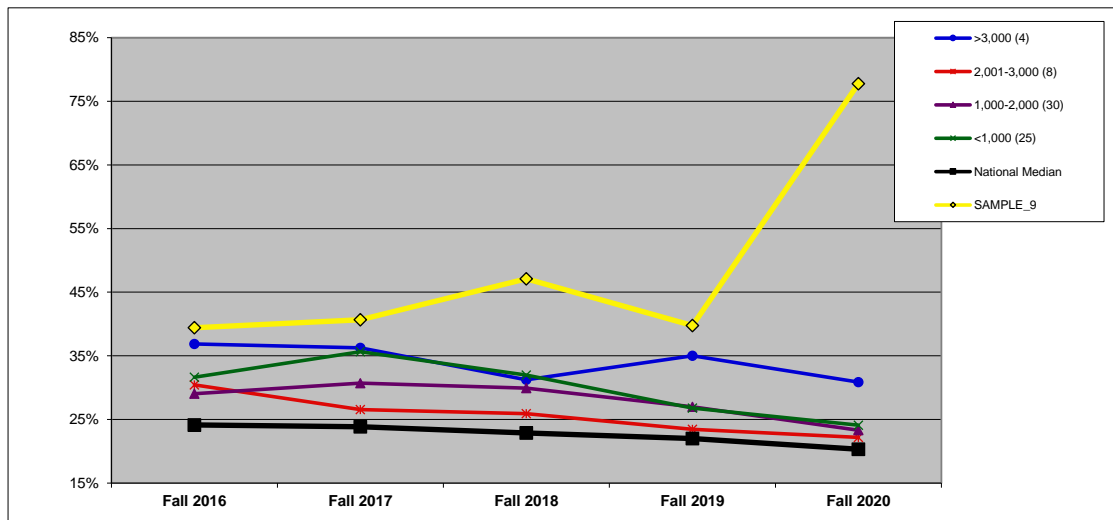
SIZE 1,000-2,000

NATIONAL: SIZE (n=638).



	Fall 2016	Fall 2017	Fall 2018	Fall 2019	Fall 2020
>3,000 (85)	20.8%	21.0%	19.4%	19.8%	17.2%
2,001-3,000 (118)	23.1%	22.9%	23.1%	21.6%	20.6%
1,000-2,000 (273)	24.5%	23.0%	22.3%	21.4%	20.3%
<1,000 (162)	28.3%	27.7%	27.2%	24.0%	22.3%
National Median	24.1%	23.8%	22.9%	22.0%	20.3%
SAMPLE_9	39.4%	40.7%	47.1%	39.8%	77.8%

WEST REGION: SIZE (n=67).



	Fall 2016	Fall 2017	Fall 2018	Fall 2019	Fall 2020
>3,000 (4)	36.9%	36.3%	31.3%	35.0%	30.9%
2,001-3,000 (8)	30.4%	26.6%	25.9%	23.4%	22.2%
1,000-2,000 (30)	29.0%	30.7%	29.9%	27.0%	23.3%
<1,000 (25)	31.6%	35.6%	32.0%	26.8%	24.1%
National Median	24.1%	23.8%	22.9%	22.0%	20.3%
SAMPLE_9	39.4%	40.7%	47.1%	39.8%	77.8%

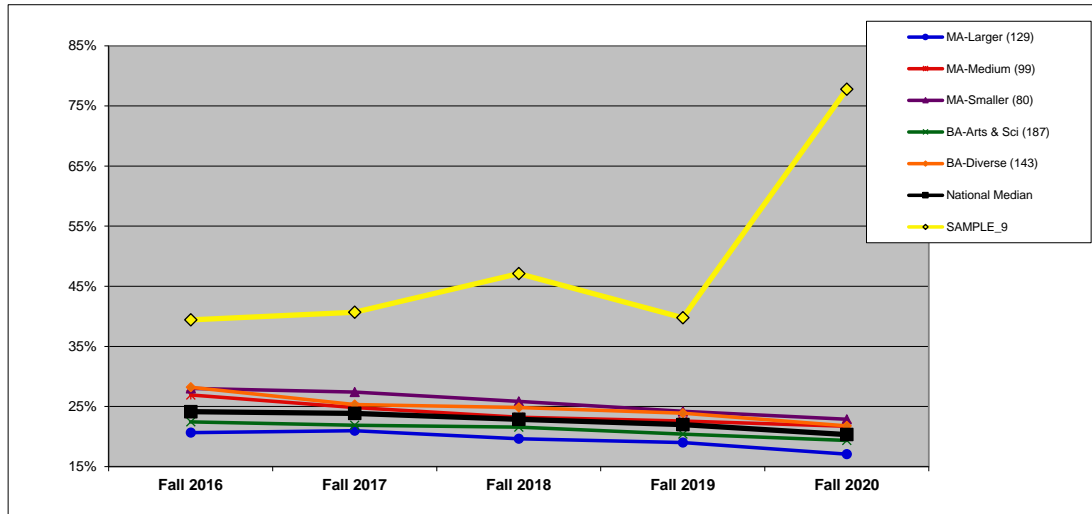
ADMISSIONS YIELD RATE (%): BY CARNEGIE CLASSIFICATION (3C)

DEFINITION: Percentage of admitted students who enrolled. See Introduction for information on the Carnegie classifications. (All national and regional data are presented as medians.)

	Fall 2016	Fall 2017	Fall 2018	Fall 2019	Fall 2020
SAMPLE_9	39.4%	40.7%	47.1%	39.8%	77.8%

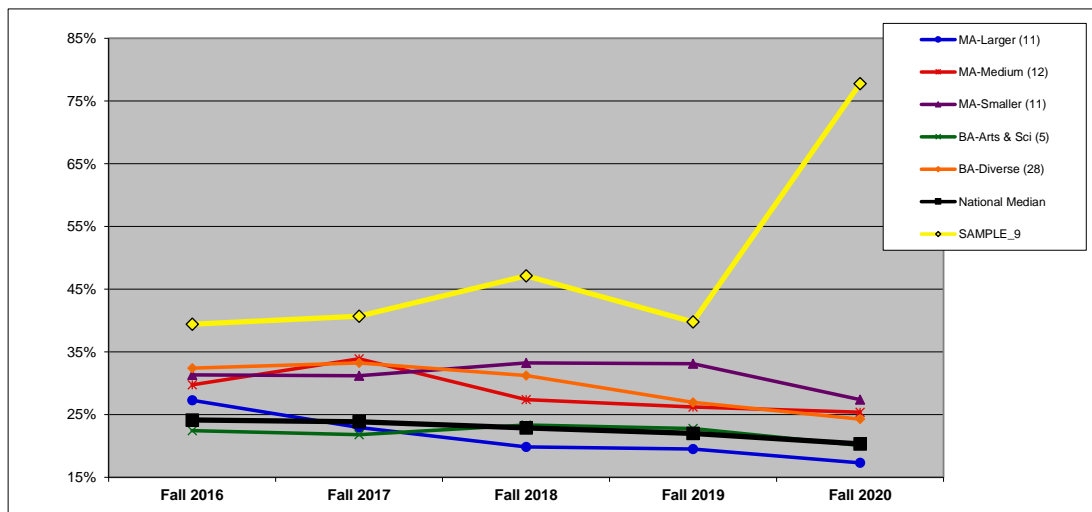
CARNEGIE MA-Medium

NATIONAL: CARNEGIE (n=638).



	Fall 2016	Fall 2017	Fall 2018	Fall 2019	Fall 2020
MA-Larger (129)	20.7%	21.0%	19.6%	19.0%	17.1%
MA-Medium (99)	26.9%	24.8%	23.2%	22.6%	21.7%
MA-Smaller (80)	28.0%	27.4%	25.9%	24.2%	22.9%
BA-Arts & Sci (187)	22.4%	21.9%	21.6%	20.4%	19.3%
BA-Diverse (143)	28.2%	25.3%	24.8%	23.9%	21.8%
National Median	24.1%	23.8%	22.9%	22.0%	20.3%
SAMPLE_9	39.4%	40.7%	47.1%	39.8%	77.8%

WEST REGION: CARNEGIE (n=67).



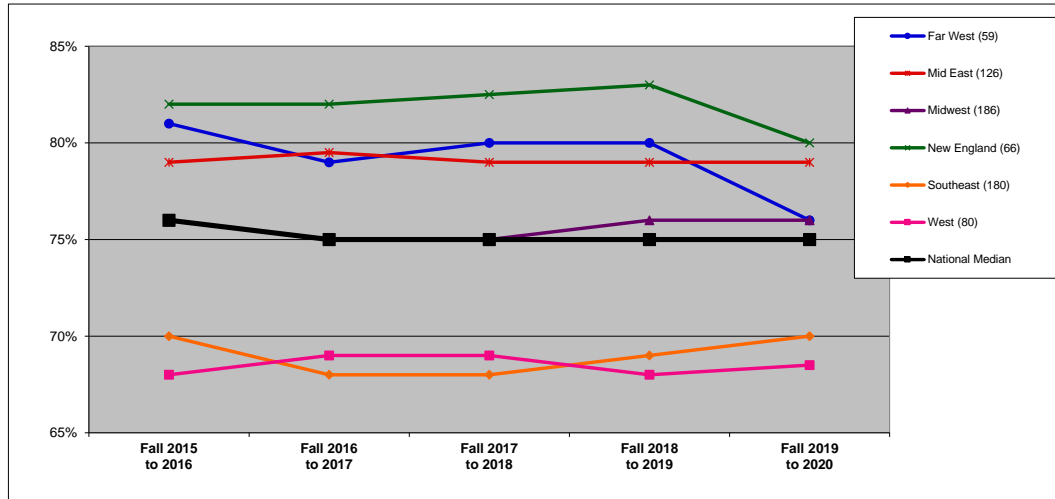
	Fall 2016	Fall 2017	Fall 2018	Fall 2019	Fall 2020
MA-Larger (11)	27.3%	23.0%	19.8%	19.5%	17.3%
MA-Medium (12)	29.8%	33.9%	27.4%	26.2%	25.4%
MA-Smaller (11)	31.3%	31.2%	33.2%	33.1%	27.4%
BA-Arts & Sci (5)	22.4%	21.8%	23.3%	22.8%	20.1%
BA-Diverse (28)	32.4%	33.2%	31.2%	27.0%	24.3%
National Median	24.1%	23.8%	22.9%	22.0%	20.3%
SAMPLE_9	39.4%	40.7%	47.1%	39.8%	77.8%

RETENTION RATE (%): BY REGION (4R)

DEFINITION: The first to second year retention rate is the percentage of the fall full-time cohort (minus exclusions) that re-enrolled at the institution as either full- or part-time students in the fall of the next year.

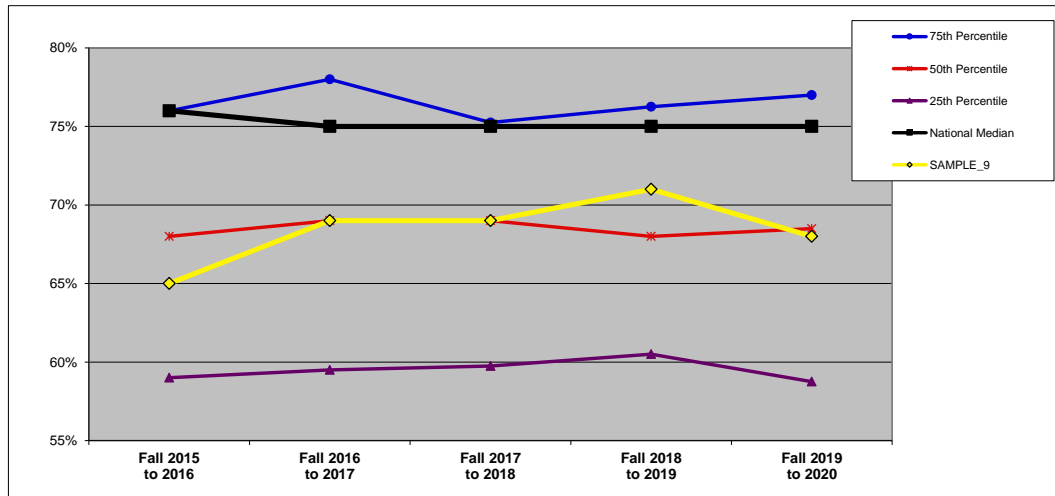
	Fall 2015 to 2016	Fall 2016 to 2017	Fall 2017 to 2018	Fall 2018 to 2019	Fall 2019 to 2020
SAMPLE_9	65%	69%	69%	71%	68%

NATIONAL (n=697). All data on this chart are presented as medians. See Introduction for description of regions.



	Fall 2015 to 2016	Fall 2016 to 2017	Fall 2017 to 2018	Fall 2018 to 2019	Fall 2019 to 2020
Far West (59)	81%	79%	80%	80%	76%
Mid East (126)	79%	80%	79%	79%	79%
Midwest (186)	76%	75%	75%	76%	76%
New England (66)	82%	82%	83%	83%	80%
Southeast (180)	70%	68%	68%	69%	70%
West (80)	68%	69%	69%	68%	69%
National Median	76%	75%	75%	75%	75%

WEST REGION (n=80). In addition to the median, which is the 50th percentile, this chart shows the 75th and 25th percentiles for the region.



	Fall 2015 to 2016	Fall 2016 to 2017	Fall 2017 to 2018	Fall 2018 to 2019	Fall 2019 to 2020
75th Percentile	76%	78%	75%	76%	77%
50th Percentile	68%	69%	69%	68%	69%
25th Percentile	59%	60%	60%	61%	59%
National Median	76%	75%	75%	75%	75%
SAMPLE_9	65%	69%	69%	71%	68%

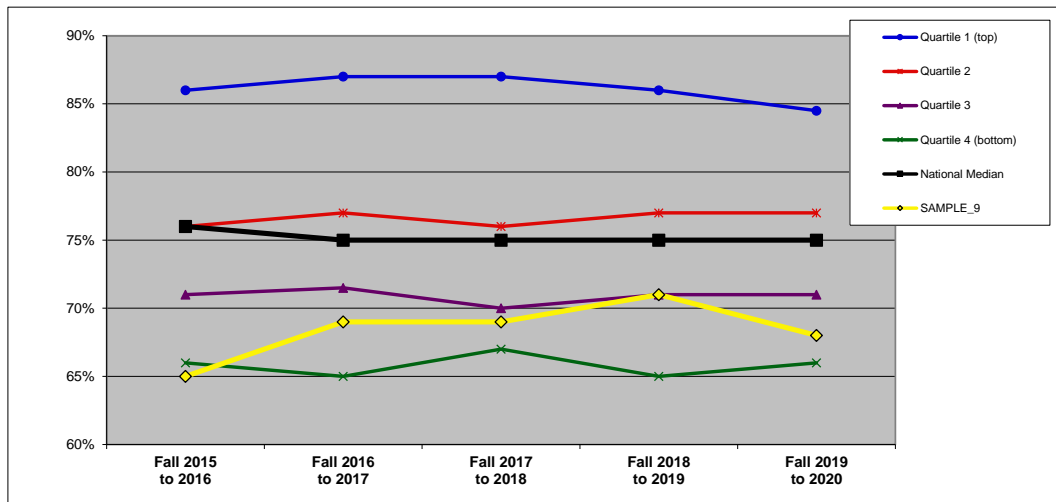
RETENTION RATE (%): BY FINANCIAL RESOURCES (4F)

DEFINITION: The first to second year retention rate is the percentage of the fall full-time cohort (minus exclusions) that re-enrolled at the institution as either full- or part-time students in the fall of the next year. (All national and regional data are presented as medians.)

	Fall 2015 to 2016	Fall 2016 to 2017	Fall 2017 to 2018	Fall 2018 to 2019	Fall 2019 to 2020
SAMPLE_9	65%	69%	69%	71%	68%

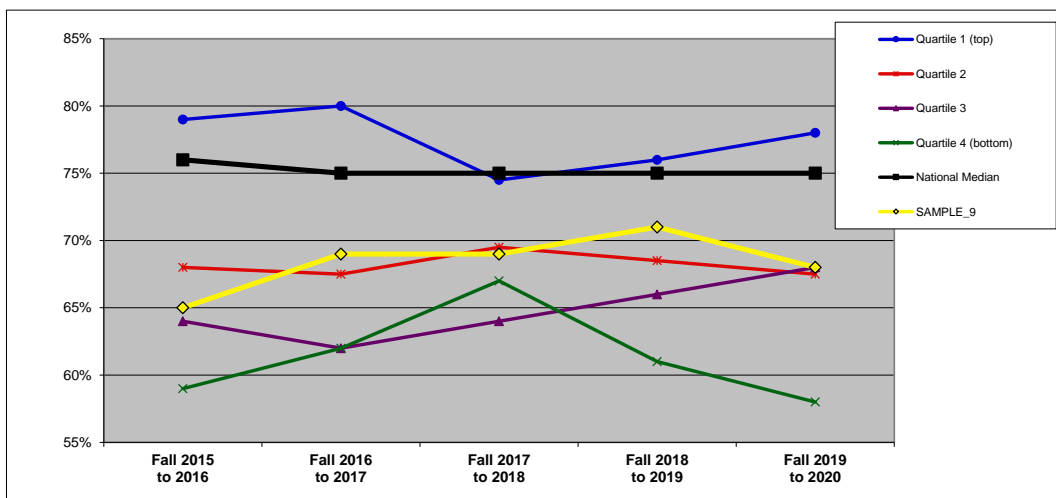
QUANTILES	
NATIONAL	3
REGIONAL	3

NATIONAL: FINANCIAL RESOURCES (n=680).



	Fall 2015 to 2016	Fall 2016 to 2017	Fall 2017 to 2018	Fall 2018 to 2019	Fall 2019 to 2020
Quartile 1 (top)	86%	87%	87%	86%	85%
Quartile 2	76%	77%	76%	77%	77%
Quartile 3	71%	72%	70%	71%	71%
Quartile 4 (bottom)	66%	65%	67%	65%	66%
National Median	76%	75%	75%	75%	75%
SAMPLE_9	65%	69%	69%	71%	68%

WEST REGION: FINANCIAL RESOURCES (n=78).



	Fall 2015 to 2016	Fall 2016 to 2017	Fall 2017 to 2018	Fall 2018 to 2019	Fall 2019 to 2020
Quartile 1 (top)	79%	80%	75%	76%	78%
Quartile 2	68%	68%	70%	69%	68%
Quartile 3	64%	62%	64%	66%	68%
Quartile 4 (bottom)	59%	62%	67%	61%	58%
National Median	76%	75%	75%	75%	75%
SAMPLE_9	65%	69%	69%	71%	68%

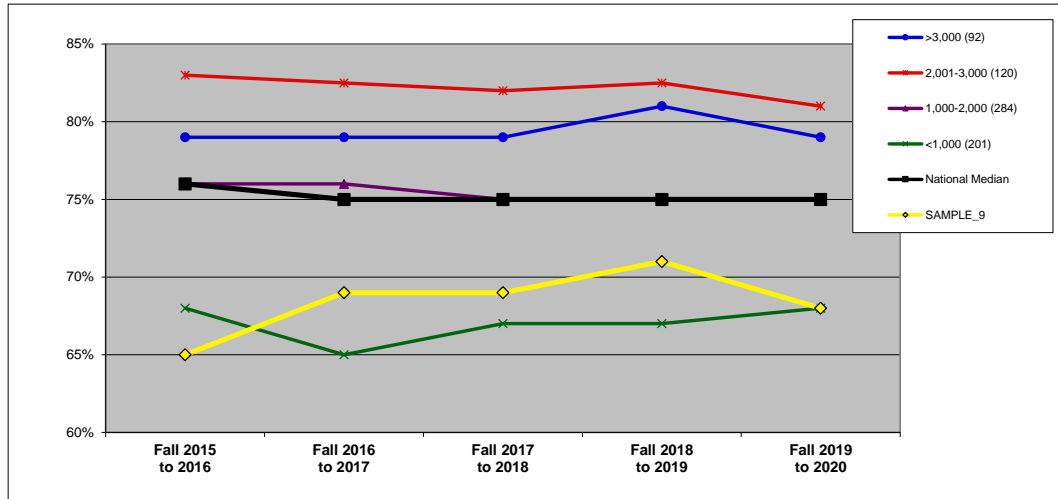
RETENTION RATE (%): BY ENROLLMENT SIZE (4S)

DEFINITION: The first to second year retention rate is the percentage of the fall full-time cohort (minus exclusions) that re-enrolled at the institution as either full- or part-time students in the fall of the next year. (All national and regional data are presented as medians.)

	Fall 2015 to 2016	Fall 2016 to 2017	Fall 2017 to 2018	Fall 2018 to 2019	Fall 2019 to 2020
SAMPLE_9	65%	69%	69%	71%	68%

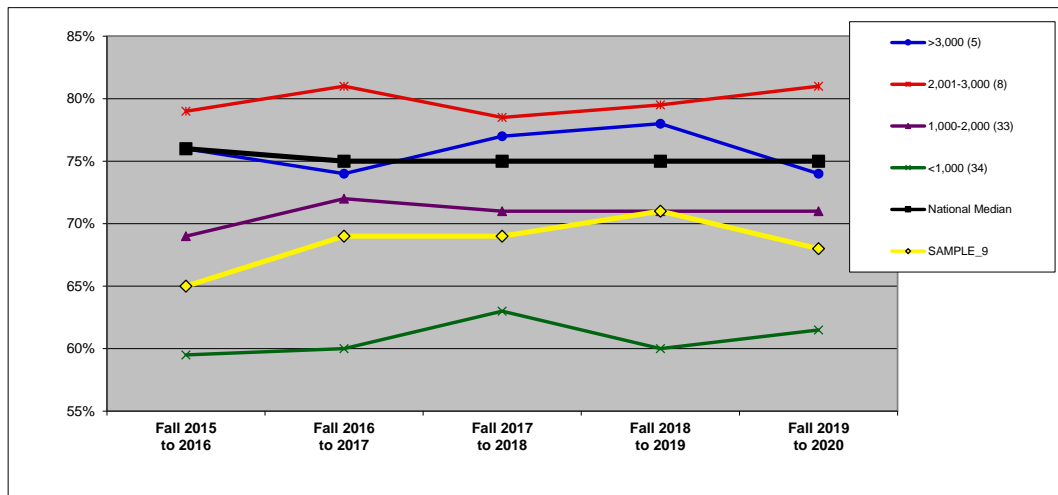
SIZE 1,000-2,000

NATIONAL: SIZE (n=697).



	Fall 2015 to 2016	Fall 2016 to 2017	Fall 2017 to 2018	Fall 2018 to 2019	Fall 2019 to 2020
>3,000 (92)	79%	79%	79%	81%	79%
2,001-3,000 (120)	83%	83%	82%	83%	81%
1,000-2,000 (284)	76%	76%	75%	75%	75%
<1,000 (201)	68%	65%	67%	67%	68%
National Median	76%	75%	75%	75%	75%
SAMPLe_9	65%	69%	69%	71%	68%

WEST REGION: SIZE (n=80).



	Fall 2015 to 2016	Fall 2016 to 2017	Fall 2017 to 2018	Fall 2018 to 2019	Fall 2019 to 2020
>3,000 (5)	76%	74%	77%	78%	74%
2,001-3,000 (8)	79%	81%	79%	80%	81%
1,000-2,000 (33)	69%	72%	71%	71%	71%
<1,000 (34)	60%	60%	63%	60%	62%
National Median	76%	75%	75%	75%	75%
SAMPLe_9	65%	69%	69%	71%	68%

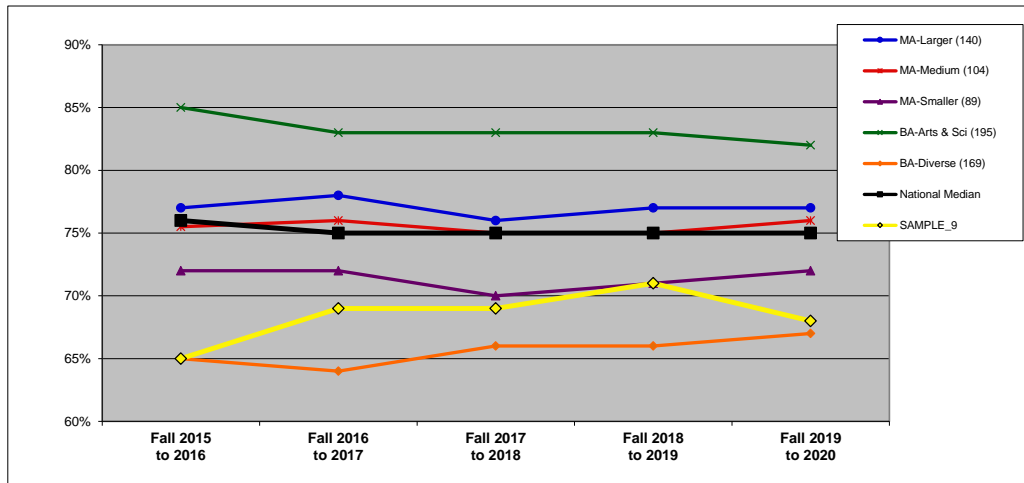
RETENTION RATE (%): BY CARNEGIE CLASSIFICATION (4C)

DEFINITION: The first to second year retention rate is the percentage of the fall full-time cohort (minus exclusions) that re-enrolled at the institution as either full- or part-time students in the fall of the next year. See Introduction for information on the Carnegie classifications. (All national and regional data are presented as medians.)

	Fall 2015 to 2016	Fall 2016 to 2017	Fall 2017 to 2018	Fall 2018 to 2019	Fall 2019 to 2020
SAMPLE_9	65%	69%	69%	71%	68%

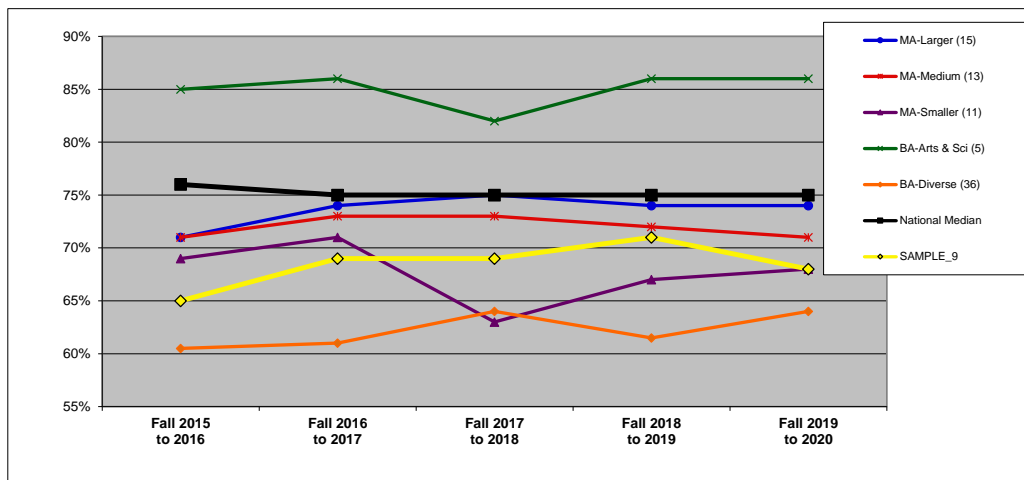
CARNEGIE MA-Medium

NATIONAL: CARNEGIE (n=697).



	Fall 2015 to 2016	Fall 2016 to 2017	Fall 2017 to 2018	Fall 2018 to 2019	Fall 2019 to 2020
MA-Larger (140)	77%	78%	76%	77%	77%
MA-Medium (104)	76%	76%	75%	75%	76%
MA-Smaller (89)	72%	72%	70%	71%	72%
BA-Arts & Sci (195)	85%	83%	83%	83%	82%
BA-Diverse (169)	65%	64%	66%	66%	67%
National Median	76%	75%	75%	75%	75%
SAMPLE_9	65%	69%	69%	71%	68%

WEST REGION: CARNEGIE (n=80).



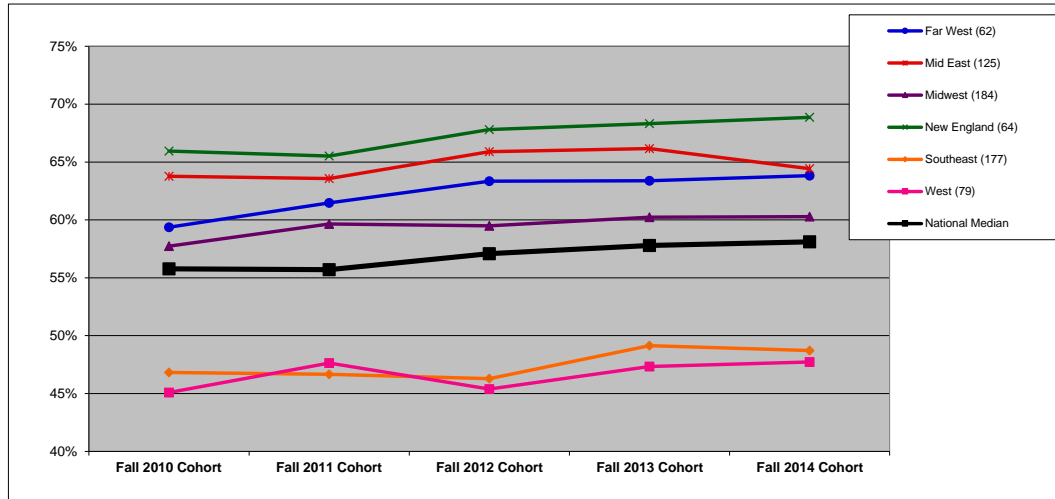
	Fall 2015 to 2016	Fall 2016 to 2017	Fall 2017 to 2018	Fall 2018 to 2019	Fall 2019 to 2020
MA-Larger (15)	71%	74%	75%	74%	74%
MA-Medium (13)	71%	73%	73%	72%	71%
MA-Smaller (11)	69%	71%	63%	67%	68%
BA-Arts & Sci (5)	85%	86%	82%	86%	86%
BA-Diverse (36)	61%	61%	64%	62%	64%
National Median	76%	75%	75%	75%	75%
SAMPLE_9	65%	69%	69%	71%	68%

GRADUATION RATE (%): BY REGION (5R)

DEFINITION: The six-year, cohort graduation rate for full-time, first-time degree-seeking undergraduate students. For example, the Fall 2014 Cohort rate is the percentage that graduated by end of Summer 2020.

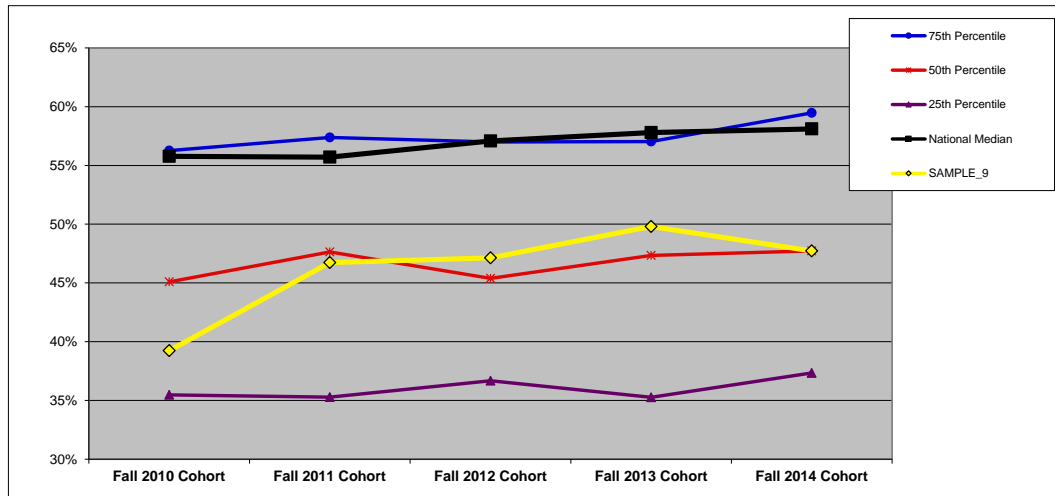
	Fall 2010 Cohort	Fall 2011 Cohort	Fall 2012 Cohort	Fall 2013 Cohort	Fall 2014 Cohort
SAMPLE_9	39.2%	46.7%	47.1%	49.8%	47.7%

NATIONAL (n=691). All data on this chart are presented as medians. See Introduction for description of regions.



	Fall 2010 Cohort	Fall 2011 Cohort	Fall 2012 Cohort	Fall 2013 Cohort	Fall 2014 Cohort
Far West (62)	59.4%	61.5%	63.3%	63.4%	63.8%
Mid East (125)	63.8%	63.6%	65.9%	66.2%	64.4%
Midwest (184)	57.7%	59.6%	59.5%	60.2%	60.3%
New England (64)	65.9%	65.5%	67.8%	68.3%	68.9%
Southeast (177)	46.8%	46.7%	46.3%	49.1%	48.7%
West (79)	45.1%	47.6%	45.4%	47.3%	47.7%
National Median	55.8%	55.7%	57.1%	57.8%	58.1%

WEST REGION (n=79). In addition to the median, which is the 50th percentile, this chart shows the 75th and 25th percentiles for the region.



	Fall 2010 Cohort	Fall 2011 Cohort	Fall 2012 Cohort	Fall 2013 Cohort	Fall 2014 Cohort
75th Percentile	56.3%	57.4%	57.0%	57.0%	59.5%
50th Percentile	45.1%	47.6%	45.4%	47.3%	47.7%
25th Percentile	35.5%	35.3%	36.7%	35.3%	37.3%
National Median	55.8%	55.7%	57.1%	57.8%	58.1%
SAMPLE_9	39.2%	46.7%	47.1%	49.8%	47.7%

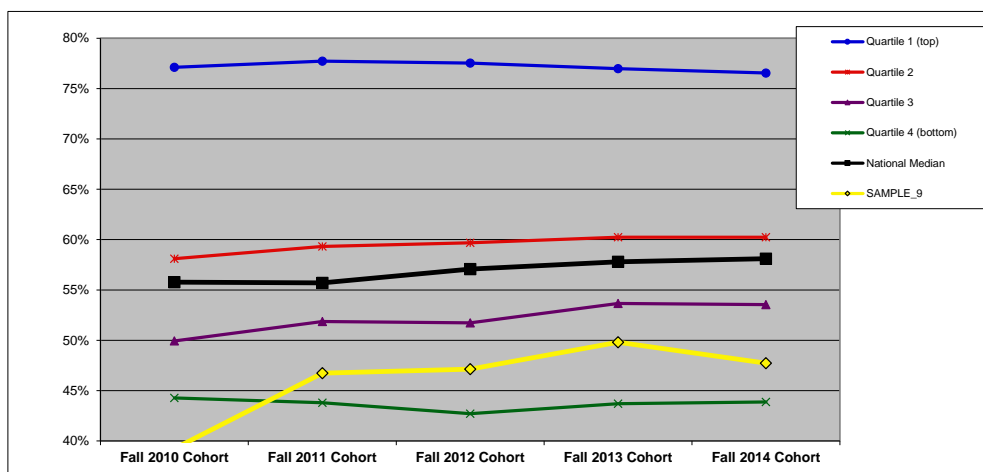
GRADUATION RATE (%): BY FINANCIAL RESOURCES (5F)

DEFINITION: The six-year, cohort graduation rate for full-time, first-time degree-seeking undergraduate students. For example, the Fall 2014 Cohort rate is the percentage that graduated by end of Summer 2020. (All national and regional data are presented as medians.)

	Fall 2010 Cohort	Fall 2011 Cohort	Fall 2012 Cohort	Fall 2013 Cohort	Fall 2014 Cohort
SAMPLE 9	39.2%	46.7%	47.1%	49.8%	47.7%

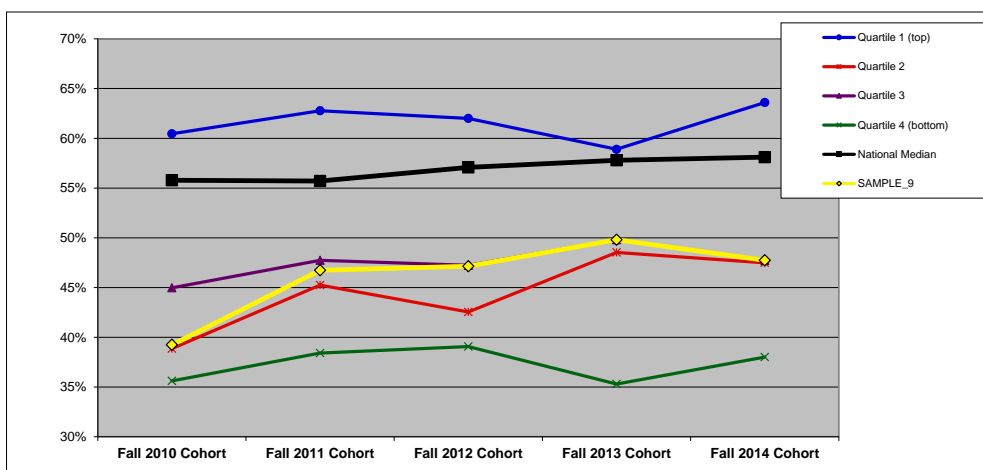
QUANTILES	
NATIONAL	3
REGIONAL	3

NATIONAL: FINANCIAL RESOURCES (n=677).



	Fall 2010 Cohort	Fall 2011 Cohort	Fall 2012 Cohort	Fall 2013 Cohort	Fall 2014 Cohort
Quartile 1 (top)	77.1%	77.7%	77.5%	77.0%	76.6%
Quartile 2	58.1%	59.3%	59.7%	60.2%	60.2%
Quartile 3	49.9%	51.9%	51.7%	53.7%	53.5%
Quartile 4 (bottom)	44.3%	43.8%	42.7%	43.7%	43.9%
National Median	55.8%	55.7%	57.1%	57.8%	58.1%
SAMPLE_9	39.2%	46.7%	47.1%	49.8%	47.7%

WEST REGION: FINANCIAL RESOURCES (n=77).



	Fall 2010 Cohort	Fall 2011 Cohort	Fall 2012 Cohort	Fall 2013 Cohort	Fall 2014 Cohort
Quartile 1 (top)	60.5%	62.8%	62.0%	58.9%	63.6%
Quartile 2	38.9%	45.2%	42.5%	48.5%	47.5%
Quartile 3	45.0%	47.7%	47.2%	49.8%	47.7%
Quartile 4 (bottom)	35.6%	38.4%	39.1%	35.3%	38.0%
National Median	55.8%	55.7%	57.1%	57.8%	58.1%
SAMPLE_9	39.2%	46.7%	47.1%	49.8%	47.7%

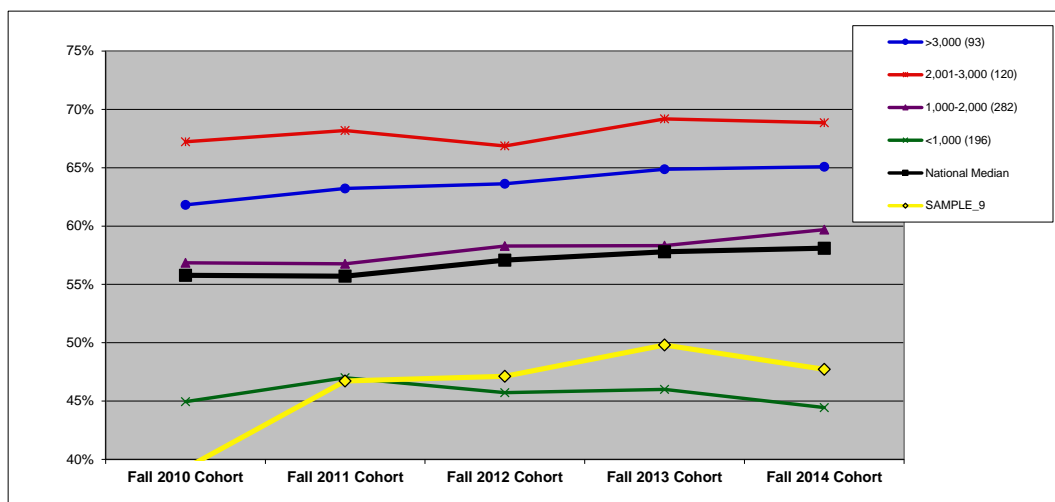
GRADUATION RATE (%): BY ENROLLMENT SIZE (5S)

DEFINITION: The six-year, cohort graduation rate for full-time, first-time degree-seeking undergraduate students. For example, the Fall 2014 Cohort rate is the percentage that graduated by end of Summer 2020. (All national and regional data are presented as medians.)

	Fall 2010 Cohort	Fall 2011 Cohort	Fall 2012 Cohort	Fall 2013 Cohort	Fall 2014 Cohort
SAMPLE_9	39.2%	46.7%	47.1%	49.8%	47.7%

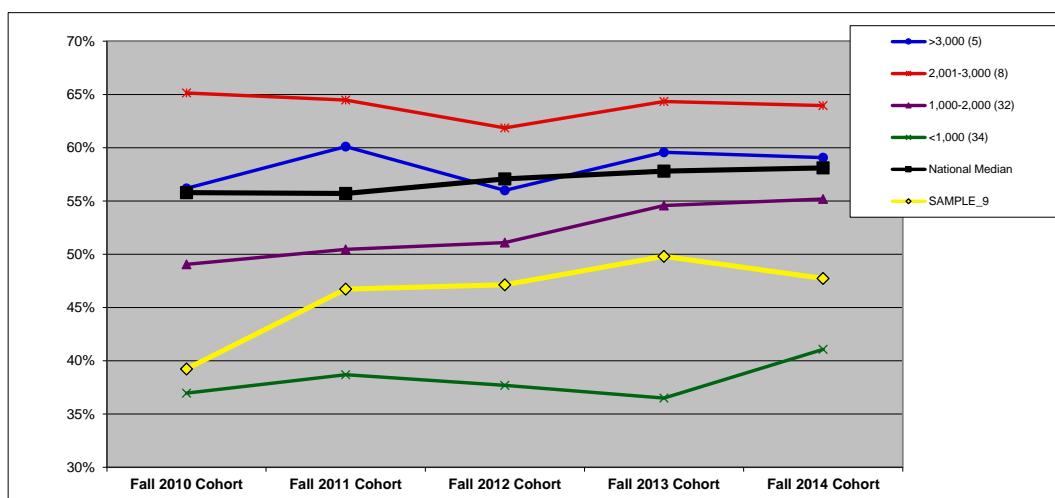
SIZE 1,000-2,000

NATIONAL: SIZE (n=691).



	Fall 2010 Cohort	Fall 2011 Cohort	Fall 2012 Cohort	Fall 2013 Cohort	Fall 2014 Cohort
>3,000 (93)	61.8%	63.2%	63.6%	64.9%	65.1%
2,001-3,000 (120)	67.2%	68.2%	66.9%	69.2%	68.9%
1,000-2,000 (282)	56.9%	56.8%	58.3%	58.3%	59.7%
<1,000 (196)	45.0%	47.0%	45.7%	46.0%	44.4%
National Median	55.8%	55.7%	57.1%	57.8%	58.1%
SAMPLE_9	39.2%	46.7%	47.1%	49.8%	47.7%

WEST REGION: SIZE (n=79).



	Fall 2010 Cohort	Fall 2011 Cohort	Fall 2012 Cohort	Fall 2013 Cohort	Fall 2014 Cohort
>3,000 (5)	56.2%	60.1%	56.0%	59.6%	59.1%
2,001-3,000 (8)	65.1%	64.5%	61.9%	64.3%	64.0%
1,000-2,000 (32)	49.0%	50.5%	51.1%	54.6%	55.2%
<1,000 (34)	37.0%	38.7%	37.7%	36.5%	41.1%
National Median	55.8%	55.7%	57.1%	57.8%	58.1%
SAMPLE_9	39.2%	46.7%	47.1%	49.8%	47.7%

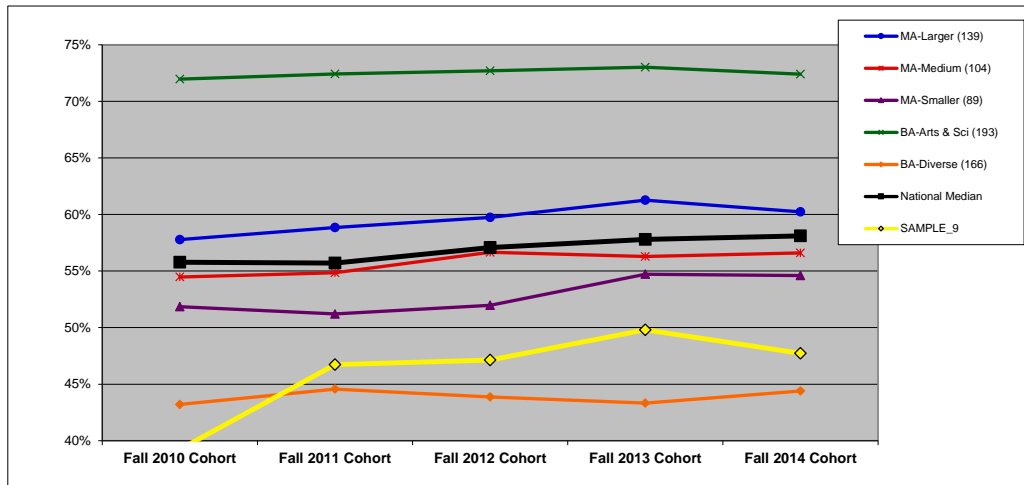
GRADUATION RATE (%): BY CARNEGIE CLASSIFICATION (5C)

DEFINITION: The six-year, cohort graduation rate for full-time, first-time degree-seeking undergraduate students. For example, the Fall 2014 Cohort rate is the percentage that graduated by end of Summer 2020. See Introduction for information on the Carnegie classifications. (All national and regional data are presented as medians.)

	Fall 2010 Cohort	Fall 2011 Cohort	Fall 2012 Cohort	Fall 2013 Cohort	Fall 2014 Cohort
SAMPLE_9	39.2%	46.7%	47.1%	49.8%	47.7%

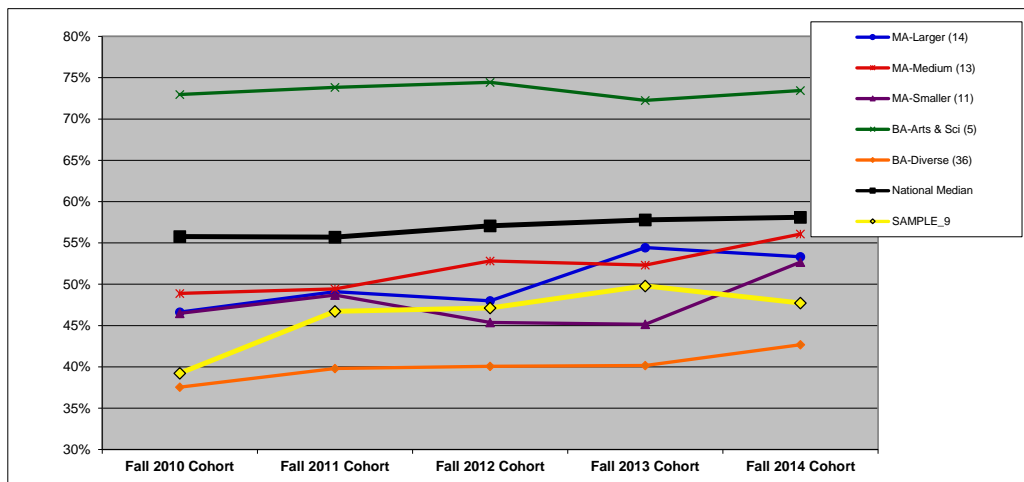
CARNEGIE MA-Medium

NATIONAL: CARNEGIE (n=691).



	Fall 2010 Cohort	Fall 2011 Cohort	Fall 2012 Cohort	Fall 2013 Cohort	Fall 2014 Cohort
MA-Larger (139)	57.8%	58.8%	59.7%	61.3%	60.2%
MA-Medium (104)	54.5%	54.8%	56.7%	56.3%	56.6%
MA-Smaller (89)	51.9%	51.2%	52.0%	54.7%	54.6%
BA-Arts & Sci (193)	72.0%	72.4%	72.7%	73.0%	72.4%
BA-Diverse (166)	43.2%	44.6%	43.9%	43.3%	44.4%
National Median	55.8%	55.7%	57.1%	57.8%	58.1%
SAMPLE_9	39.2%	46.7%	47.1%	49.8%	47.7%

WEST REGION: CARNEGIE (n=79).



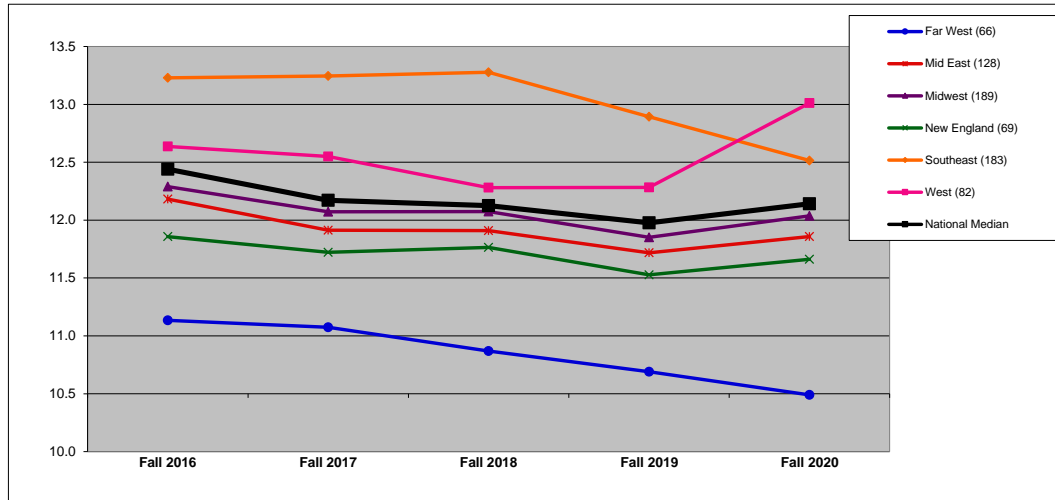
	Fall 2010 Cohort	Fall 2011 Cohort	Fall 2012 Cohort	Fall 2013 Cohort	Fall 2014 Cohort
MA-Larger (14)	46.6%	49.1%	48.0%	54.4%	53.3%
MA-Medium (13)	48.9%	49.4%	52.8%	52.3%	56.1%
MA-Smaller (11)	46.5%	48.7%	45.4%	45.2%	52.7%
BA-Arts & Sci (5)	73.0%	73.8%	74.4%	72.3%	73.4%
BA-Diverse (36)	37.5%	39.8%	40.1%	40.2%	42.7%
National Median	55.8%	55.7%	57.1%	57.8%	58.1%
SAMPLE_9	39.2%	46.7%	47.1%	49.8%	47.7%

STUDENT/FACULTY RATIO: BY REGION (6R)

DEFINITION: Total fall full-time equivalent (FTE) enrollment, including undergraduate, graduate, and first-professional students, divided by instructional faculty FTE.

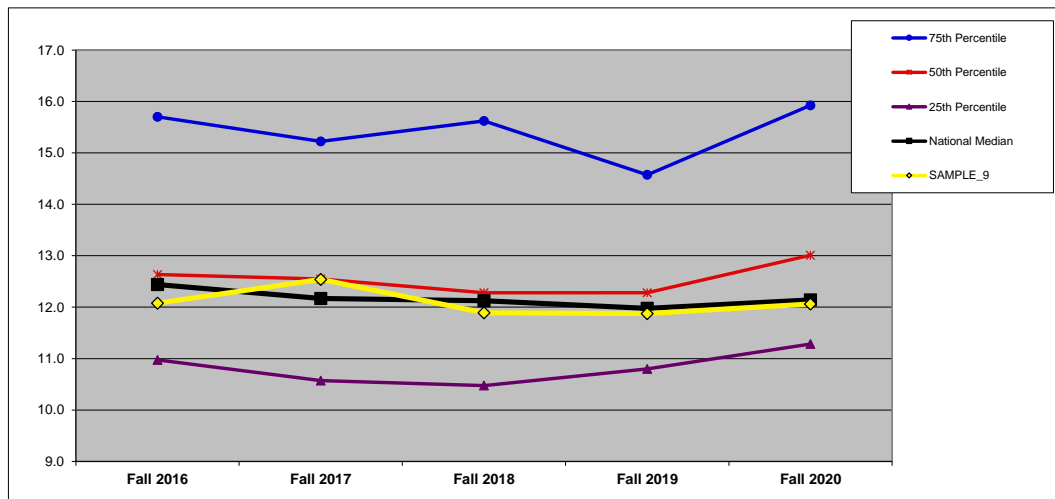
	Fall 2016	Fall 2017	Fall 2018	Fall 2019	Fall 2020	Y1 to Y5 Change
SAMPLE_9	12.1	12.5	11.9	11.9	12.1	-0.1%

NATIONAL (n=717). All data on this chart are presented as medians. See Introduction for description of regions.



	Fall 2016	Fall 2017	Fall 2018	Fall 2019	Fall 2020	Y1 to Y5 Change
Far West (66)	11.1	11.1	10.9	10.7	10.5	-5.8%
Mid East (128)	12.2	11.9	11.9	11.7	11.9	-2.7%
Midwest (189)	12.3	12.1	12.1	11.9	12.0	-2.1%
New England (69)	11.9	11.7	11.8	11.5	11.7	-1.6%
Southeast (183)	13.2	13.2	13.3	12.9	12.5	-5.4%
West (82)	12.6	12.5	12.3	12.3	13.0	3.0%
National Median	12.4	12.2	12.1	12.0	12.1	-2.4%

WEST REGION (n=82). In addition to the median, which is the 50th percentile, this chart shows the 75th and 25th percentiles for the region.



	Fall 2016	Fall 2017	Fall 2018	Fall 2019	Fall 2020	Y1 to Y5 Change
75th Percentile	15.7	15.2	15.6	14.6	15.9	1.4%
50th Percentile	12.6	12.5	12.3	12.3	13.0	3.0%
25th Percentile	11.0	10.6	10.5	10.8	11.3	2.8%
National Median	12.4	12.2	12.1	12.0	12.1	-2.4%
SAMPLE_9	12.1	12.5	11.9	11.9	12.1	-0.1%

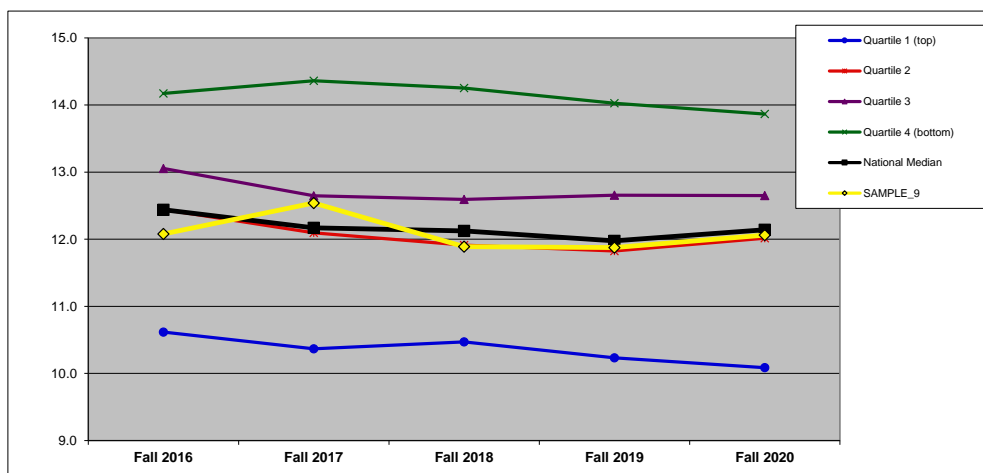
STUDENT/FACULTY RATIO: BY FINANCIAL RESOURCES (6F)

DEFINITION: Total fall full-time equivalent (FTE) enrollment, including undergraduate, graduate, and first-professional students, divided by instructional faculty FTE. (All national and regional data are presented as medians.)

	Fall 2016	Fall 2017	Fall 2018	Fall 2019	Fall 2020	Y1 to Y5 Change
SAMPLE_9	12.1	12.5	11.9	11.9	12.1	-0.1%

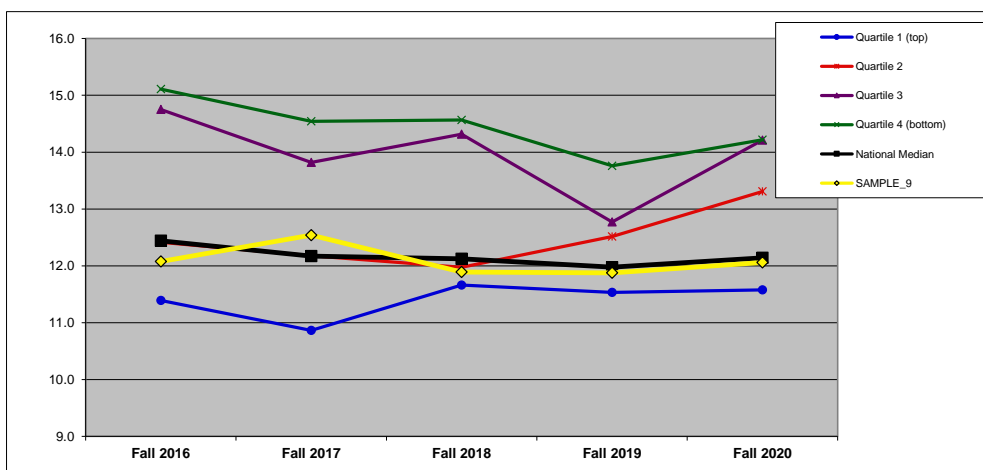
QUARTILES		
NATIONAL	3	
REGIONAL	3	

NATIONAL: FINANCIAL RESOURCES (n=698).



	Fall 2016	Fall 2017	Fall 2018	Fall 2019	Fall 2020	Y1 to Y5 Change
Quartile 1 (top)	10.6	10.4	10.5	10.2	10.1	-5.0%
Quartile 2	12.4	12.1	11.9	11.8	12.0	-3.4%
Quartile 3	13.1	12.6	12.6	12.7	12.7	-3.1%
Quartile 4 (bottom)	14.2	14.4	14.3	14.0	13.9	-2.2%
National Median	12.4	12.2	12.1	12.0	12.1	-2.4%
SAMPLE_9	12.1	12.5	11.9	11.9	12.1	-0.1%

WEST REGION: FINANCIAL RESOURCES (n=80).



	Fall 2016	Fall 2017	Fall 2018	Fall 2019	Fall 2020	Y1 to Y5 Change
Quartile 1 (top)	11.4	10.9	11.7	11.5	11.6	1.6%
Quartile 2	12.4	12.2	12.0	12.5	13.3	7.2%
Quartile 3	14.8	13.8	14.3	12.8	14.2	-3.7%
Quartile 4 (bottom)	15.1	14.5	14.6	13.8	14.2	-5.9%
National Median	12.4	12.2	12.1	12.0	12.1	-2.4%
SAMPLE_9	12.1	12.5	11.9	11.9	12.1	-0.1%

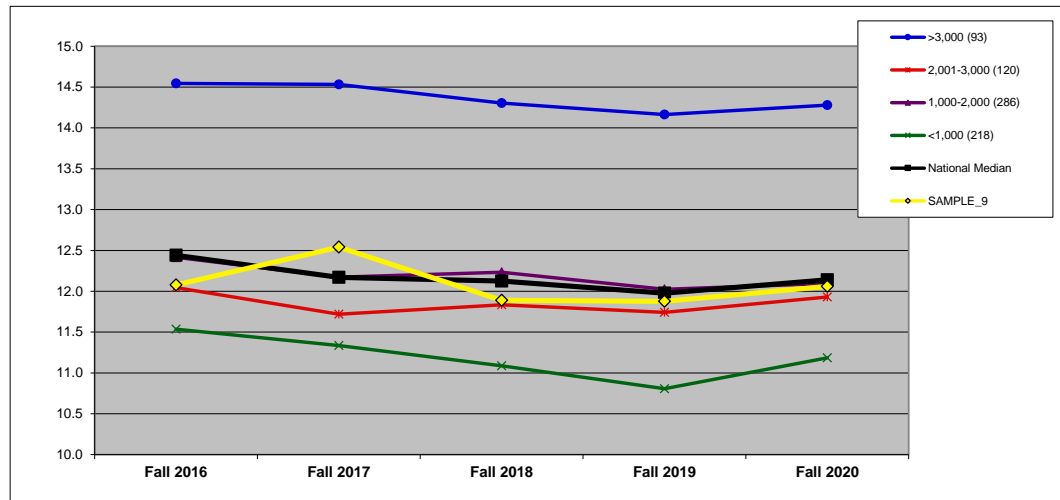
STUDENT/FACULTY RATIO: BY ENROLLMENT SIZE (6S)

DEFINITION: Total fall full-time equivalent (FTE) enrollment, including undergraduate, graduate, and first-professional students, divided by instructional faculty FTE. (All national and regional data are presented as medians.)

	Fall 2016	Fall 2017	Fall 2018	Fall 2019	Fall 2020	Y1 to Y5 Change
SAMPLE_9	12.1	12.5	11.9	11.9	12.1	-0.1%

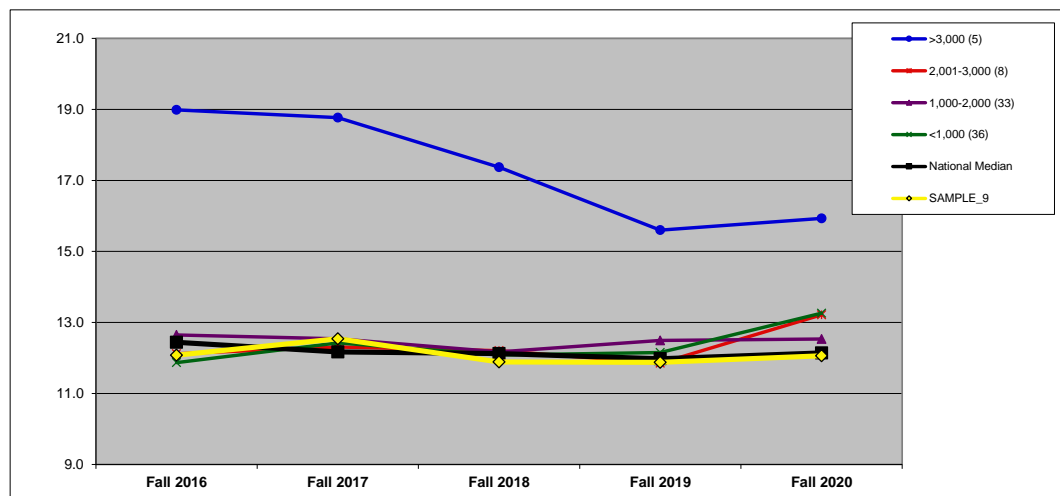
SIZE 1,000-2,000

NATIONAL: SIZE (n=717).



	Fall 2016	Fall 2017	Fall 2018	Fall 2019	Fall 2020	Y1 to Y5 Change
>3,000 (93)	14.5	14.5	14.3	14.2	14.3	-1.8%
2,001-3,000 (120)	12.0	11.7	11.8	11.7	11.9	-1.0%
1,000-2,000 (286)	12.4	12.2	12.2	12.0	12.1	-2.6%
<1,000 (218)	11.5	11.3	11.1	10.8	11.2	-3.0%
National Median	12.4	12.2	12.1	12.0	12.1	-2.4%
SAMPLE_9	12.1	12.5	11.9	11.9	12.1	-0.1%

WEST REGION: SIZE (n=82).



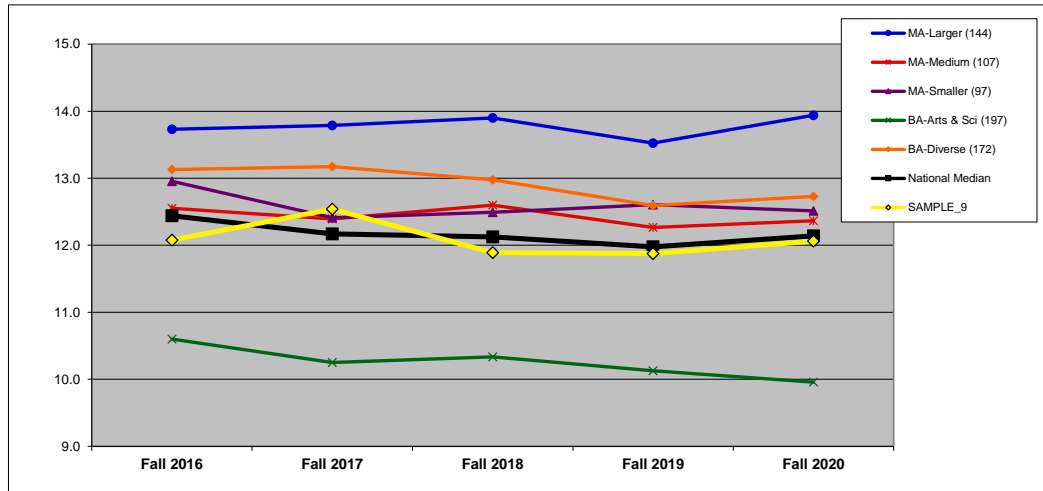
	Fall 2016	Fall 2017	Fall 2018	Fall 2019	Fall 2020	Y1 to Y5 Change
>3,000 (5)	19.0	18.8	17.4	15.6	15.9	-16.1%
2,001-3,000 (8)	12.1	12.3	12.2	11.9	13.2	9.1%
1,000-2,000 (33)	12.6	12.5	12.2	12.5	12.5	-0.9%
<1,000 (36)	11.9	12.4	12.1	12.2	13.3	11.7%
National Median	12.4	12.2	12.1	12.0	12.1	-2.4%
SAMPLE_9	12.1	12.5	11.9	11.9	12.1	-0.1%

STUDENT/FACULTY RATIO: BY CARNEGIE CLASSIFICATION (6C)

DEFINITION: Total fall full-time equivalent (FTE) enrollment, including undergraduate, graduate, and first-professional students, divided by instructional faculty FTE. See Introduction for information on the Carnegie classifications. (All national and regional data are presented as medians.)

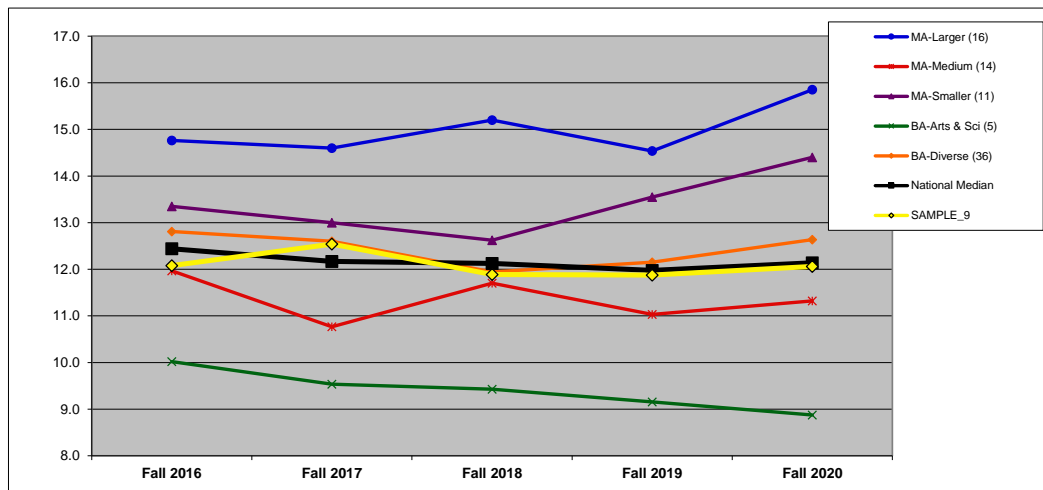
	Fall 2016	Fall 2017	Fall 2018	Fall 2019	Fall 2020	Y1 to Y5 Change	CARNEGIE
SAMPLE_9	12.1	12.5	11.9	11.9	12.1	-0.1%	MA-Medium

NATIONAL: CARNEGIE (n=717).



	Fall 2016	Fall 2017	Fall 2018	Fall 2019	Fall 2020	Y1 to Y5 Change
MA-Larger (144)	13.7	13.8	13.9	13.5	13.9	1.5%
MA-Medium (107)	12.6	12.4	12.6	12.3	12.4	-1.5%
MA-Smaller (97)	13.0	12.4	12.5	12.6	12.5	-3.4%
BA-Arts & Sci (197)	10.6	10.3	10.3	10.1	10.0	-6.1%
BA-Diverse (172)	13.1	13.2	13.0	12.6	12.7	-3.1%
National Median	12.4	12.2	12.1	12.0	12.1	-2.4%
SAMPLE_9	12.1	12.5	11.9	11.9	12.1	-0.1%

WEST REGION: CARNEGIE (n=82).



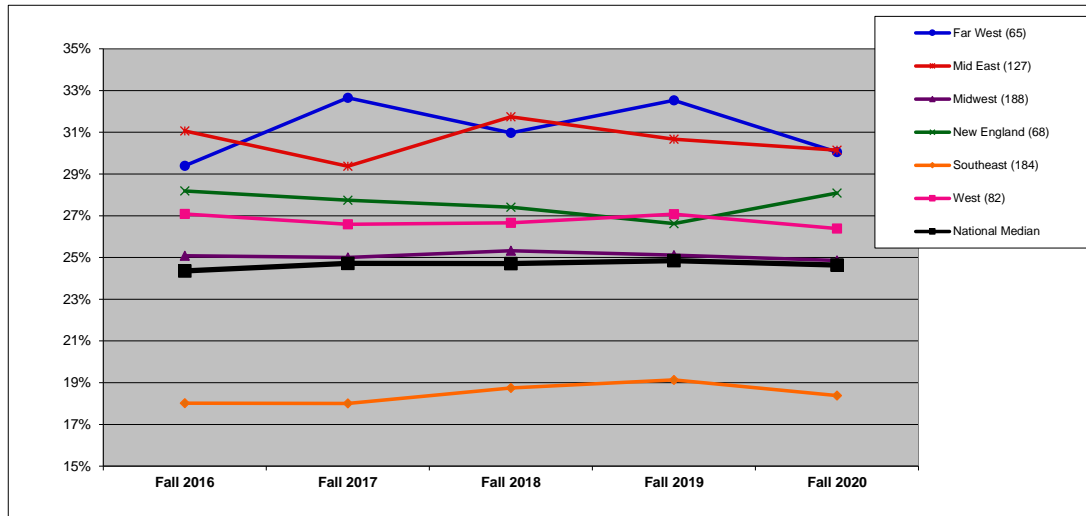
	Fall 2016	Fall 2017	Fall 2018	Fall 2019	Fall 2020	Y1 to Y5 Change
MA-Larger (16)	14.8	14.6	15.2	14.5	15.9	7.4%
MA-Medium (14)	12.0	10.8	11.7	11.0	11.3	-5.4%
MA-Smaller (11)	13.3	13.0	12.6	13.6	14.4	7.9%
BA-Arts & Sci (5)	10.0	9.5	9.4	9.2	8.9	-11.4%
BA-Diverse (36)	12.8	12.6	11.9	12.2	12.6	-1.3%
National Median	12.4	12.2	12.1	12.0	12.1	-2.4%
SAMPLE_9	12.1	12.5	11.9	11.9	12.1	-0.1%

PART-TIME FACULTY (%): BY REGION (7R)

DEFINITION: Full-time equivalent (FTE) for part-time instructional faculty as a percentage of total instructional faculty FTE.

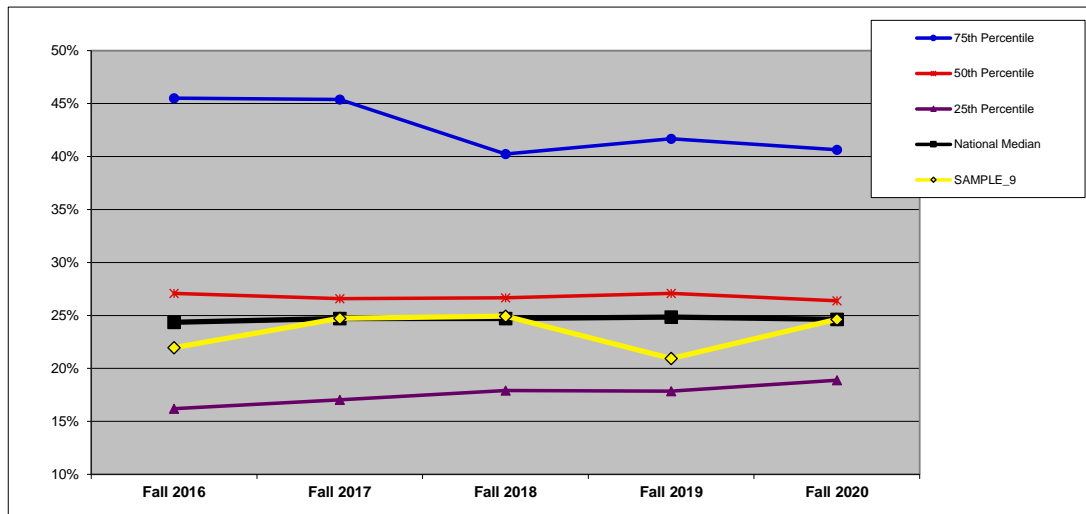
	Fall 2016	Fall 2017	Fall 2018	Fall 2019	Fall 2020
SAMPLE_9	22.0%	24.7%	24.9%	20.9%	24.6%

NATIONAL (n=714). All data on this chart are presented as medians. See Introduction for description of regions.



	Fall 2016	Fall 2017	Fall 2018	Fall 2019	Fall 2020
Far West (65)	29.4%	32.7%	31.0%	32.5%	30.1%
Mid East (127)	31.1%	29.4%	31.7%	30.7%	30.1%
Midwest (188)	25.1%	25.0%	25.3%	25.1%	24.9%
New England (68)	28.2%	27.7%	27.4%	26.6%	28.1%
Southeast (184)	18.0%	18.0%	18.8%	19.1%	18.4%
West (82)	27.1%	26.6%	26.7%	27.1%	26.4%
National Median	24.4%	24.7%	24.7%	24.8%	24.6%

WEST REGION (n=82). In addition to the median, which is the 50th percentile, this chart shows the 75th and 25th percentiles for the region.



	Fall 2016	Fall 2017	Fall 2018	Fall 2019	Fall 2020
75th Percentile	45.5%	45.4%	40.2%	41.7%	40.6%
50th Percentile	27.1%	26.6%	26.7%	27.1%	26.4%
25th Percentile	16.2%	17.0%	17.9%	17.9%	18.9%
National Median	24.4%	24.7%	24.7%	24.8%	24.6%
SAMPLE_9	22.0%	24.7%	24.9%	20.9%	24.6%

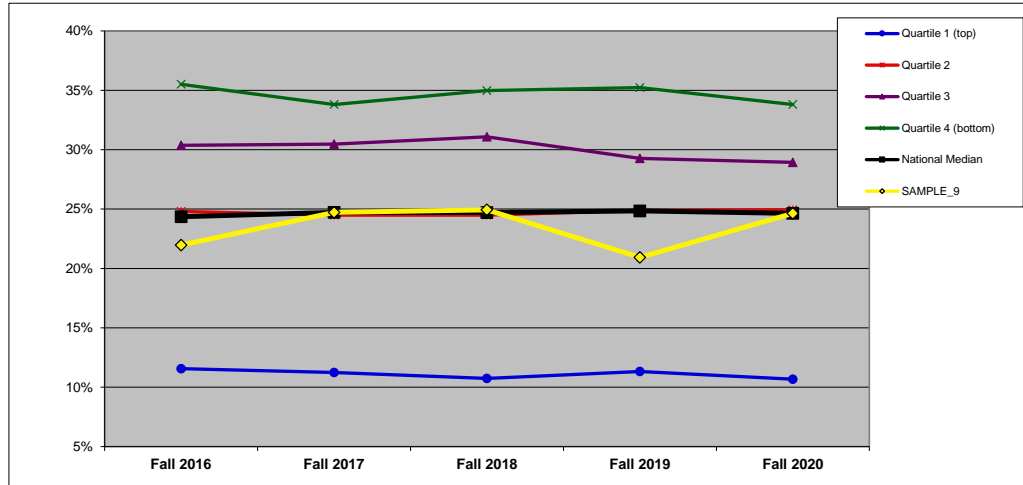
PART-TIME FACULTY (%): BY FINANCIAL RESOURCES (7F)

DEFINITION: Full-time equivalent (FTE) for part-time instructional faculty as a percentage of total instructional faculty FTE. (All national and regional data are presented as medians.)

	Fall 2016	Fall 2017	Fall 2018	Fall 2019	Fall 2020
SAMPLE_9	22.0%	24.7%	24.9%	20.9%	24.6%

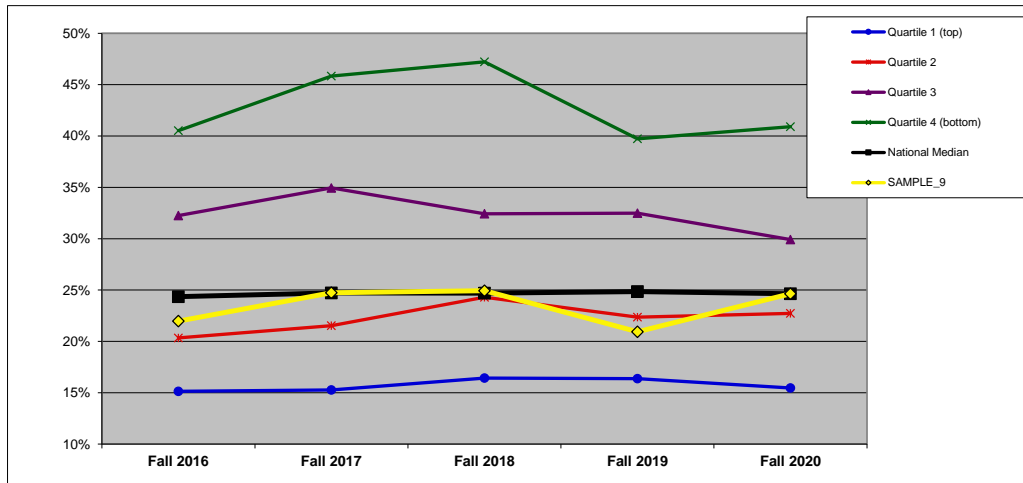
QUARTILES	
NATIONAL	3
REGIONAL	3

NATIONAL: FINANCIAL RESOURCES (n=696).



	Fall 2016	Fall 2017	Fall 2018	Fall 2019	Fall 2020
Quartile 1 (top)	11.6%	11.2%	10.7%	11.3%	10.7%
Quartile 2	24.8%	24.5%	24.5%	24.9%	24.9%
Quartile 3	30.4%	30.5%	31.1%	29.3%	28.9%
Quartile 4 (bottom)	35.5%	33.8%	35.0%	35.2%	33.8%
National Median	24.4%	24.7%	24.7%	24.8%	24.6%
SAMPLE_9	22.0%	24.7%	24.9%	20.9%	24.6%

WEST REGION: FINANCIAL RESOURCES (n=80).



	Fall 2016	Fall 2017	Fall 2018	Fall 2019	Fall 2020
Quartile 1 (top)	15.1%	15.3%	16.4%	16.4%	15.5%
Quartile 2	20.3%	21.5%	24.3%	22.4%	22.7%
Quartile 3	32.3%	34.9%	32.4%	32.5%	29.9%
Quartile 4 (bottom)	40.5%	45.8%	47.2%	39.7%	40.9%
National Median	24.4%	24.7%	24.7%	24.8%	24.6%
SAMPLE_9	22.0%	24.7%	24.9%	20.9%	24.6%

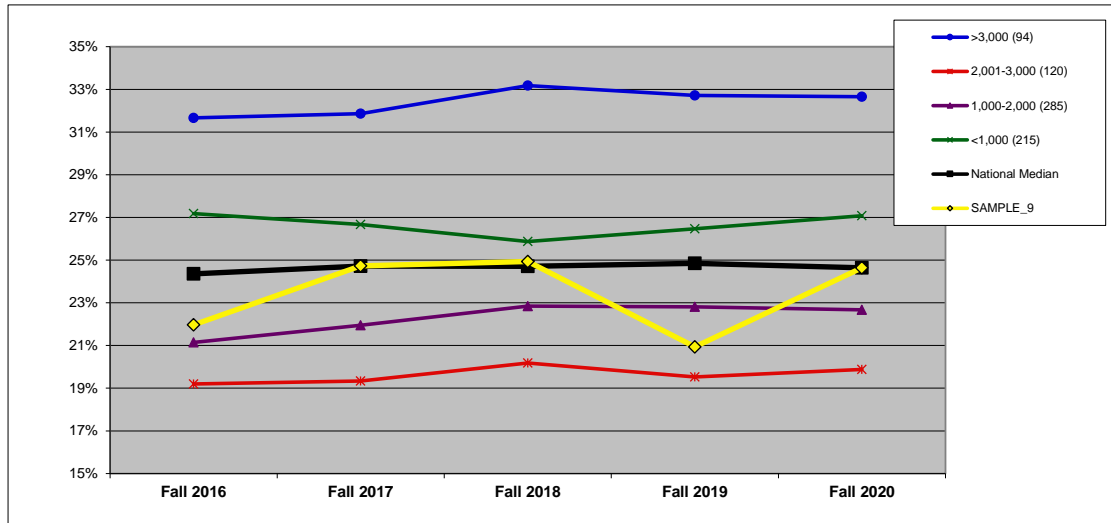
PART-TIME FACULTY (%): BY ENROLLMENT SIZE (7S)

DEFINITION: Full-time equivalent (FTE) for part-time instructional faculty as a percentage of total instructional faculty FTE. (All national and regional data are presented as medians.)

	Fall 2016	Fall 2017	Fall 2018	Fall 2019	Fall 2020
SAMPLE_9	22.0%	24.7%	24.9%	20.9%	24.6%

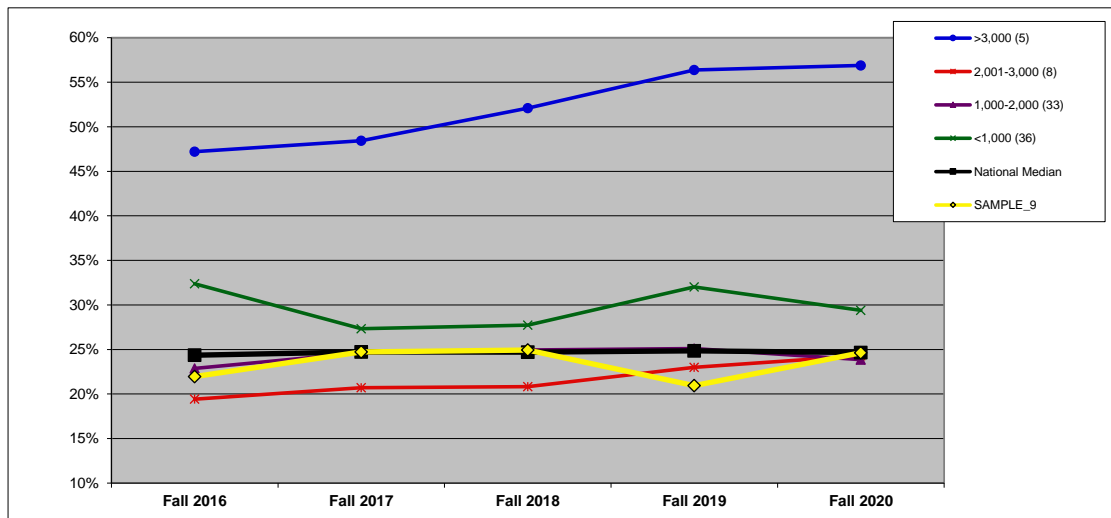
SIZE 1,000-2,000

NATIONAL: SIZE (n=714).



	Fall 2016	Fall 2017	Fall 2018	Fall 2019	Fall 2020
>3,000 (94)	31.7%	31.9%	33.2%	32.7%	32.7%
2,001-3,000 (120)	19.2%	19.3%	20.2%	19.5%	19.9%
1,000-2,000 (285)	21.1%	21.9%	22.8%	22.8%	22.7%
<1,000 (215)	27.2%	26.7%	25.9%	26.5%	27.1%
National Median	24.4%	24.7%	24.7%	24.8%	24.6%
SAMPLE_9	22.0%	24.7%	24.9%	20.9%	24.6%

WEST REGION: SIZE (n=82).



	Fall 2016	Fall 2017	Fall 2018	Fall 2019	Fall 2020
>3,000 (5)	47.2%	48.4%	52.1%	56.4%	56.9%
2,001-3,000 (8)	19.4%	20.7%	20.8%	23.0%	24.3%
1,000-2,000 (33)	22.9%	24.6%	24.9%	25.1%	23.9%
<1,000 (36)	32.4%	27.3%	27.7%	32.0%	29.4%
National Median	24.4%	24.7%	24.7%	24.8%	24.6%
SAMPLE_9	22.0%	24.7%	24.9%	20.9%	24.6%

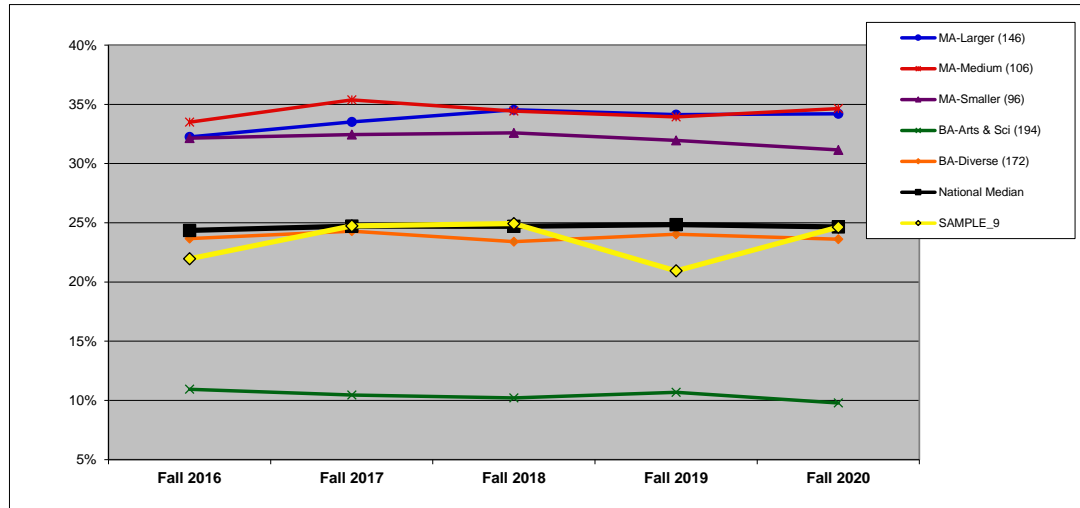
PART-TIME FACULTY (%): BY CARNEGIE CLASSIFICATION (7C)

DEFINITION: Full-time equivalent (FTE) for part-time instructional faculty as a percentage of total instructional faculty FTE. See Introduction for information on the Carnegie classifications. (All national and regional data are presented as medians.)

	Fall 2016	Fall 2017	Fall 2018	Fall 2019	Fall 2020
SAMPLE_9	22.0%	24.7%	24.9%	20.9%	24.6%

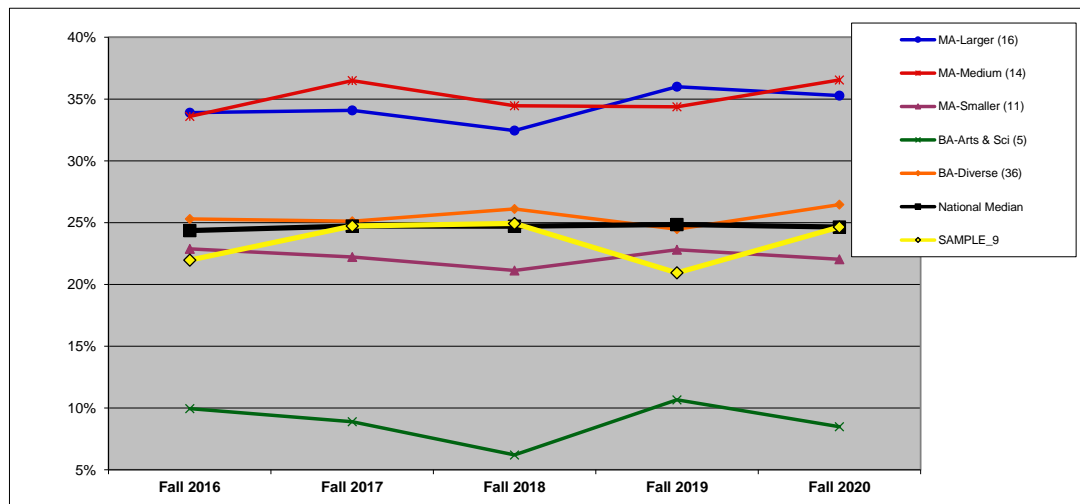
CARNEGIE MA-Medium

NATIONAL: CARNEGIE (n=714).



	Fall 2016	Fall 2017	Fall 2018	Fall 2019	Fall 2020
MA-Larger (146)	32.2%	33.5%	34.5%	34.1%	34.2%
MA-Medium (106)	33.5%	35.4%	34.4%	33.9%	34.6%
MA-Smaller (96)	32.2%	32.4%	32.6%	32.0%	31.2%
BA-Arts & Sci (194)	10.9%	10.5%	10.2%	10.7%	9.8%
BA-Diverse (172)	23.7%	24.3%	23.4%	24.0%	23.6%
National Median	24.4%	24.7%	24.7%	24.8%	24.6%
SAMPLE_9	22.0%	24.7%	24.9%	20.9%	24.6%

WEST REGION: CARNEGIE (n=82).



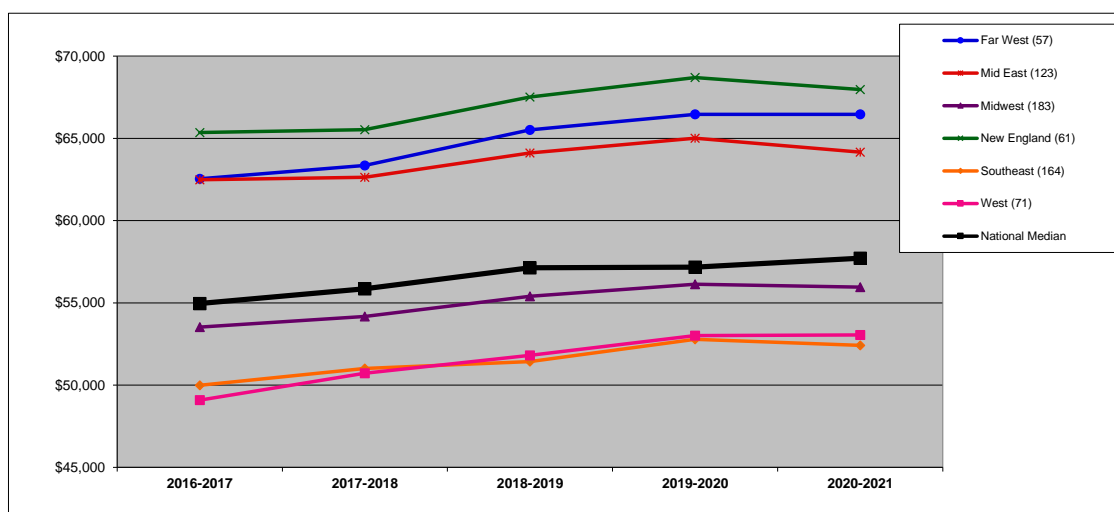
	Fall 2016	Fall 2017	Fall 2018	Fall 2019	Fall 2020
MA-Larger (16)	33.9%	34.1%	32.4%	36.0%	35.3%
MA-Medium (14)	33.6%	36.5%	34.5%	34.4%	36.5%
MA-Smaller (11)	22.9%	22.2%	21.1%	22.8%	22.0%
BA-Arts & Sci (5)	9.9%	8.9%	6.2%	10.7%	8.5%
BA-Diverse (36)	25.3%	25.1%	26.1%	24.5%	26.5%
National Median	24.4%	24.7%	24.7%	24.8%	24.6%
SAMPLE_9	22.0%	24.7%	24.9%	20.9%	24.6%

ASSISTANT PROFESSOR AVERAGE SALARY (\$): BY REGION (8R)

DEFINITION: The average salary for assistant professors equated to a 9-month contract.

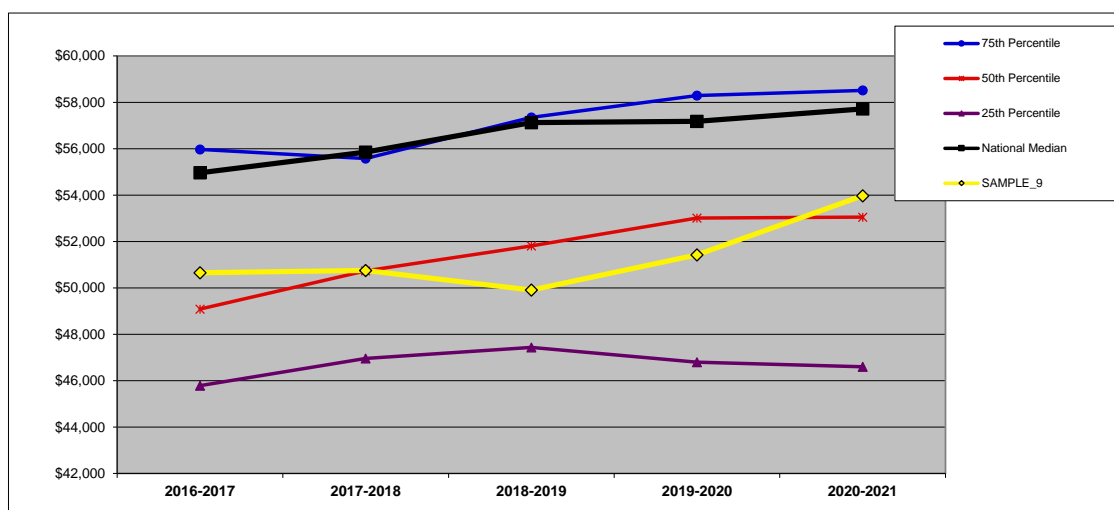
	2016-2017	2017-2018	2018-2019	2019-2020	2020-2021	Y1 to Y5 Change
SAMPLE_9	\$ 50,654	\$ 50,753	\$ 49,907	\$ 51,421	\$ 53,972	6.6%

NATIONAL (n=659). All data on this chart are presented as medians. See Introduction for description of regions.



	2016-2017	2017-2018	2018-2019	2019-2020	2020-2021	Y1 to Y5 Change
Far West (57)	\$ 62,544	\$ 63,355	\$ 65,518	\$ 66,460	\$ 66,460	6.3%
Mid East (123)	\$ 62,486	\$ 62,633	\$ 64,115	\$ 65,011	\$ 64,166	2.7%
Midwest (183)	\$ 53,528	\$ 54,180	\$ 55,398	\$ 56,134	\$ 55,952	4.5%
New England (61)	\$ 65,357	\$ 65,529	\$ 67,515	\$ 68,697	\$ 67,974	4.0%
Southeast (164)	\$ 49,990	\$ 51,011	\$ 51,428	\$ 52,784	\$ 52,412	4.8%
West (71)	\$ 49,087	\$ 50,729	\$ 51,813	\$ 53,013	\$ 53,051	8.1%
National Median	\$ 54,962	\$ 55,857	\$ 57,128	\$ 57,177	\$ 57,716	5.0%

WEST REGION (n=71). In addition to the median, which is the 50th percentile, this chart shows the 75th and 25th percentiles for the region.



	2016-2017	2017-2018	2018-2019	2019-2020	2020-2021	Y1 to Y5 Change
75th Percentile	\$ 55,974	\$ 55,576	\$ 57,355	\$ 58,291	\$ 58,513	4.5%
50th Percentile	\$ 49,087	\$ 50,729	\$ 51,813	\$ 53,013	\$ 53,051	8.1%
25th Percentile	\$ 45,785	\$ 46,958	\$ 47,434	\$ 46,797	\$ 46,598	1.8%
National Median	\$ 54,962	\$ 55,857	\$ 57,128	\$ 57,177	\$ 57,716	5.0%
SAMPLE_9	\$ 50,654	\$ 50,753	\$ 49,907	\$ 51,421	\$ 53,972	6.6%

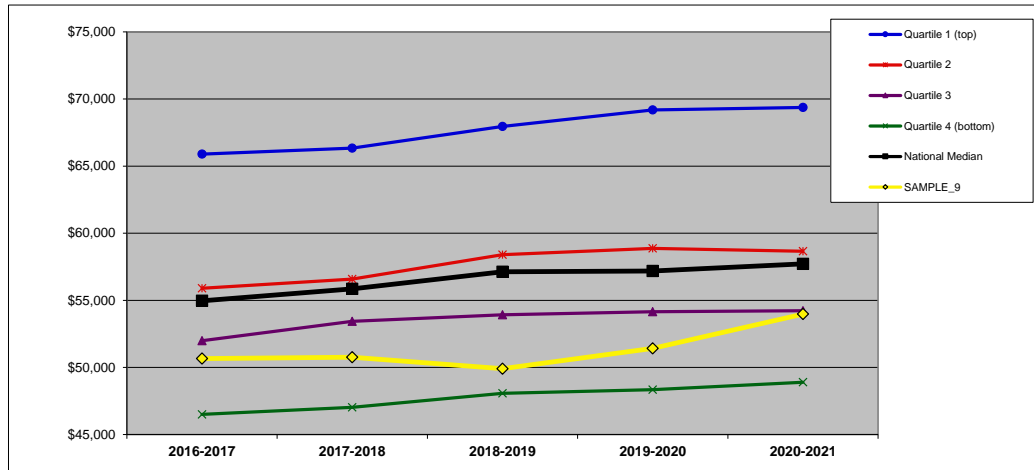
ASSISTANT PROFESSOR AVERAGE SALARY (\$): BY FINANCIAL RESOURCES (8F)

DEFINITION: The average salary for assistant professors equated to a 9-month contract. (All national and regional data are presented as medians.)

	2016-2017	2017-2018	2018-2019	2019-2020	2020-2021	Y1 to Y5 Change
SAMPLE_9	\$ 50,654	\$ 50,753	\$ 49,907	\$ 51,421	\$ 53,972	6.6%

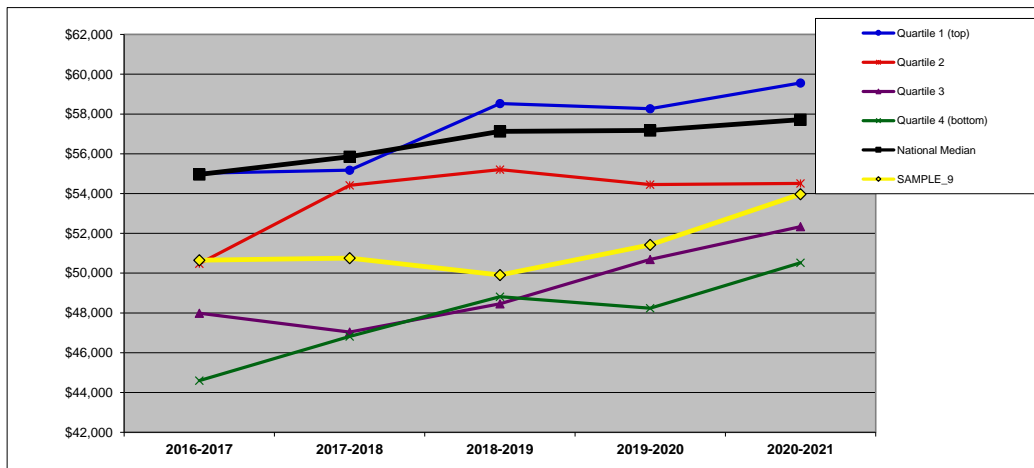
	QUARTILES
NATIONAL	3
REGIONAL	3

NATIONAL: FINANCIAL RESOURCES (n=652).



	2016-2017	2017-2018	2018-2019	2019-2020	2020-2021	Y1 to Y5 Change
Quartile 1 (top)	\$ 65,891	\$ 66,337	\$ 67,961	\$ 69,185	\$ 69,368	5.3%
Quartile 2	\$ 55,899	\$ 56,580	\$ 58,394	\$ 58,869	\$ 58,659	4.9%
Quartile 3	\$ 51,990	\$ 53,428	\$ 53,918	\$ 54,154	\$ 54,226	4.3%
Quartile 4 (bottom)	\$ 46,503	\$ 47,034	\$ 48,065	\$ 48,338	\$ 48,896	5.1%
National Median	\$ 54,962	\$ 55,857	\$ 57,128	\$ 57,177	\$ 57,716	5.0%
SAMPLE_9	\$ 50,654	\$ 50,753	\$ 49,907	\$ 51,421	\$ 53,972	6.6%

WEST REGION: FINANCIAL RESOURCES (n=71).



	2016-2017	2017-2018	2018-2019	2019-2020	2020-2021	Y1 to Y5 Change
Quartile 1 (top)	\$ 55,024	\$ 55,180	\$ 58,526	\$ 58,266	\$ 59,562	8.2%
Quartile 2	\$ 50,479	\$ 54,412	\$ 55,206	\$ 54,453	\$ 54,514	8.0%
Quartile 3	\$ 47,988	\$ 47,038	\$ 48,456	\$ 50,694	\$ 52,337	9.1%
Quartile 4 (bottom)	\$ 44,598	\$ 46,817	\$ 48,815	\$ 48,241	\$ 50,524	13.3%
National Median	\$ 54,962	\$ 55,857	\$ 57,128	\$ 57,177	\$ 57,716	5.0%
SAMPLE_9	\$ 50,654	\$ 50,753	\$ 49,907	\$ 51,421	\$ 53,972	6.6%

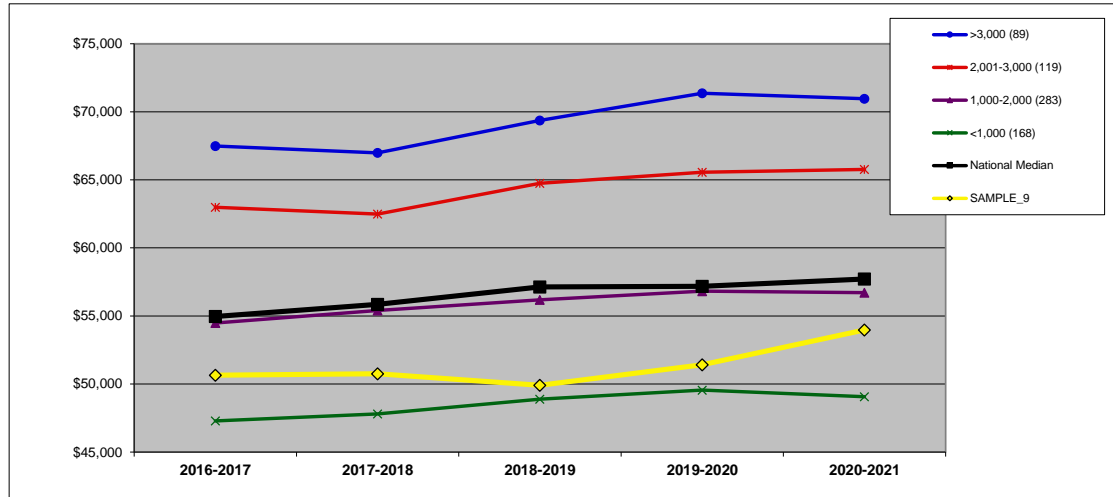
ASSISTANT PROFESSOR AVERAGE SALARY (\$): BY ENROLLMENT SIZE (8S)

DEFINITION: The average salary for assistant professors equated to a 9-month contract. (All national and regional data are presented as medians.)

	2016-2017	2017-2018	2018-2019	2019-2020	2020-2021	Y1 to Y5 Change
SAMPLE_9	\$ 50,654	\$ 50,753	\$ 49,907	\$ 51,421	\$ 53,972	6.6%

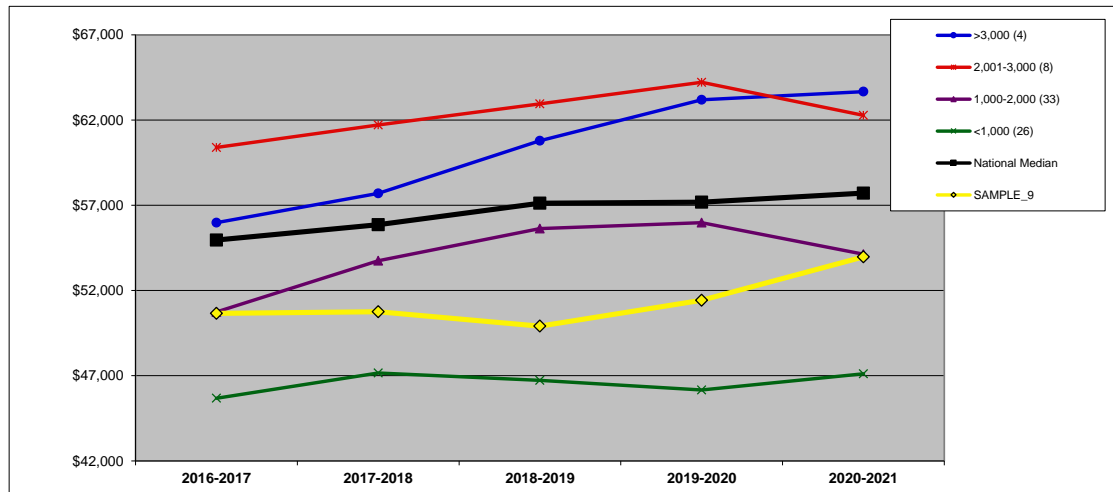
SIZE 1,000-2,000

NATIONAL: SIZE (n=659).



	2016-2017	2017-2018	2018-2019	2019-2020	2020-2021	Y1 to Y5 Change
>3,000 (89)	\$ 67,481	\$ 66,982	\$ 69,371	\$ 71,363	\$ 70,967	5.2%
2,001-3,000 (119)	\$ 62,985	\$ 62,486	\$ 64,748	\$ 65,557	\$ 65,765	4.4%
1,000-2,000 (283)	\$ 54,483	\$ 55,404	\$ 56,181	\$ 56,825	\$ 56,716	4.1%
<1,000 (168)	\$ 47,290	\$ 47,800	\$ 48,895	\$ 49,557	\$ 49,062	3.7%
National Median	\$ 54,962	\$ 55,857	\$ 57,128	\$ 57,177	\$ 57,716	5.0%
SAMPLE_9	\$ 50,654	\$ 50,753	\$ 49,907	\$ 51,421	\$ 53,972	6.6%

WEST REGION: SIZE (n=71).



	2016-2017	2017-2018	2018-2019	2019-2020	2020-2021	Y1 to Y5 Change
>3,000 (4)	\$ 55,981	\$ 57,699	\$ 60,784	\$ 63,187	\$ 63,668	13.7%
2,001-3,000 (8)	\$ 60,395	\$ 61,717	\$ 62,954	\$ 64,218	\$ 62,281	3.1%
1,000-2,000 (33)	\$ 50,742	\$ 53,748	\$ 55,632	\$ 55,980	\$ 54,134	6.7%
<1,000 (26)	\$ 45,677	\$ 47,160	\$ 46,730	\$ 46,162	\$ 47,107	3.1%
National Median	\$ 54,962	\$ 55,857	\$ 57,128	\$ 57,177	\$ 57,716	5.0%
SAMPLE_9	\$ 50,654	\$ 50,753	\$ 49,907	\$ 51,421	\$ 53,972	6.6%

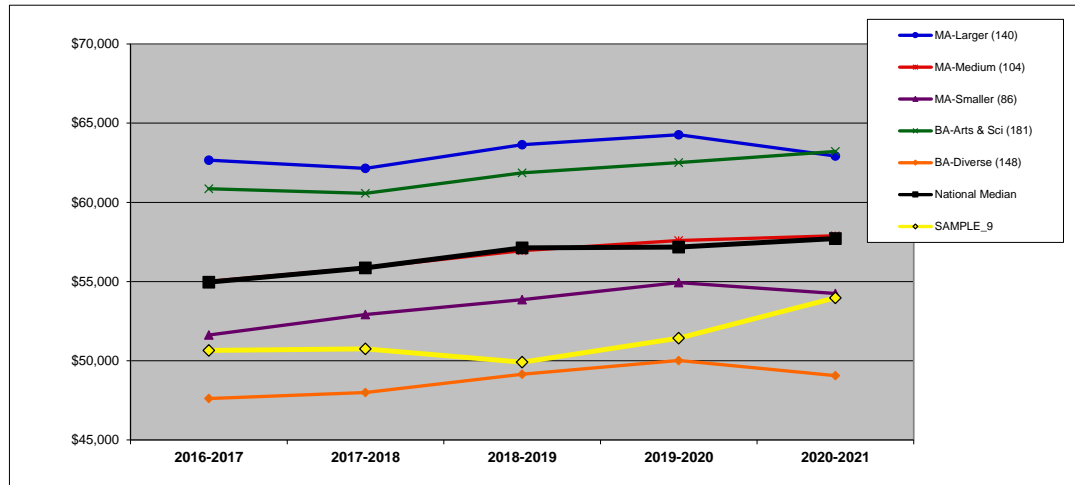
ASSISTANT PROFESSOR AVERAGE SALARY (\$): BY CARNEGIE CLASSIFICATION (8C)

DEFINITION: The average salary for assistant professors equated to a 9-month contract. See Introduction for information on the Carnegie classifications. (All national and regional data are presented as medians.)

	2016-2017	2017-2018	2018-2019	2019-2020	2020-2021	Y1 to Y5 Change
SAMPLE 9	\$ 50,654	\$ 50,753	\$ 49,907	\$ 51,421	\$ 53,972	6.6%

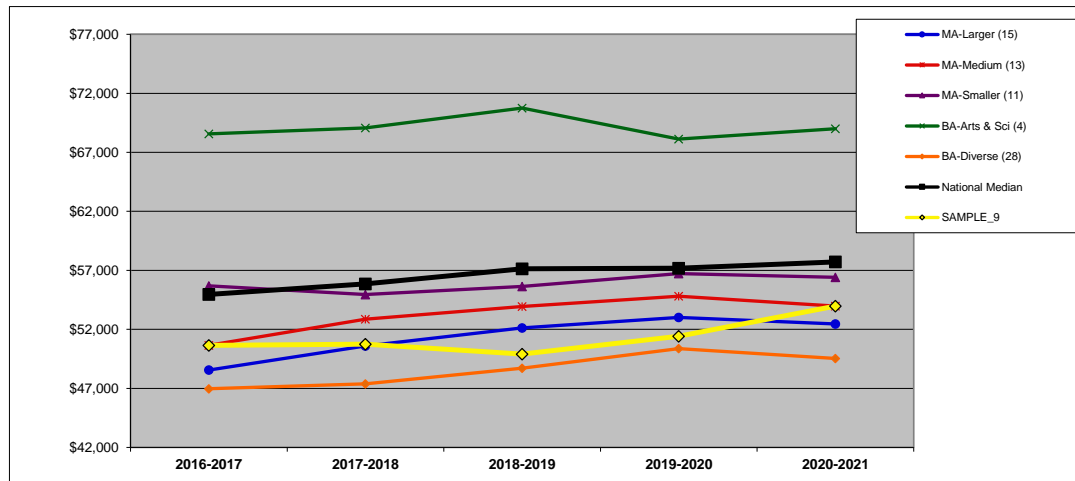
CARNEGIE MA-Medium

NATIONAL: CARNEGIE (n=659).



	2016-2017	2017-2018	2018-2019	2019-2020	2020-2021	Y1 to Y5 Change
MA-Larger (140)	\$ 62,669	\$ 62,146	\$ 63,636	\$ 64,270	\$ 62,929	0.4%
MA-Medium (104)	\$ 55,017	\$ 55,874	\$ 56,957	\$ 57,591	\$ 57,891	5.2%
MA-Smaller (86)	\$ 51,625	\$ 52,920	\$ 53,852	\$ 54,934	\$ 54,246	5.1%
BA-Arts & Sci (181)	\$ 60,861	\$ 60,570	\$ 61,857	\$ 62,518	\$ 63,215	3.9%
BA-Diverse (148)	\$ 47,614	\$ 47,998	\$ 49,148	\$ 50,018	\$ 49,062	3.0%
National Median	\$ 54,962	\$ 55,857	\$ 57,128	\$ 57,177	\$ 57,716	5.0%
SAMPLE 9	\$ 50,654	\$ 50,753	\$ 49,907	\$ 51,421	\$ 53,972	6.6%

WEST REGION: CARNEGIE (n=71).



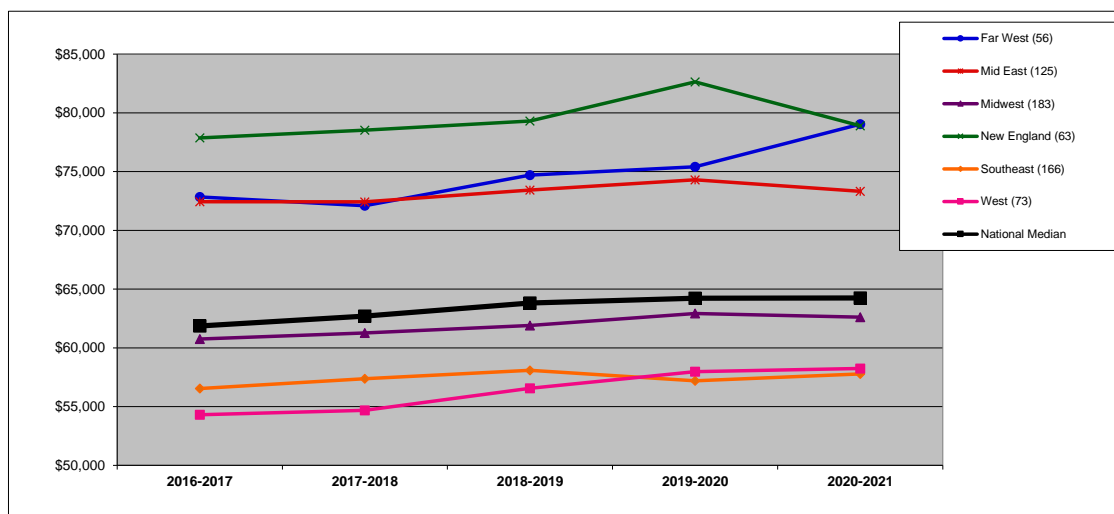
	2016-2017	2017-2018	2018-2019	2019-2020	2020-2021	Y1 to Y5 Change
MA-Larger (15)	\$ 48,554	\$ 50,597	\$ 52,119	\$ 53,013	\$ 52,463	8.1%
MA-Medium (13)	\$ 50,654	\$ 52,867	\$ 53,945	\$ 54,809	\$ 53,972	6.6%
MA-Smaller (11)	\$ 55,686	\$ 54,955	\$ 55,632	\$ 56,728	\$ 56,418	1.3%
BA-Arts & Sci (4)	\$ 68,558	\$ 69,066	\$ 70,750	\$ 68,122	\$ 68,999	0.6%
BA-Diverse (28)	\$ 46,974	\$ 47,382	\$ 48,721	\$ 50,370	\$ 49,535	5.5%
National Median	\$ 54,962	\$ 55,857	\$ 57,128	\$ 57,177	\$ 57,716	5.0%
SAMPLE 9	\$ 50,654	\$ 50,753	\$ 49,907	\$ 51,421	\$ 53,972	6.6%

ASSOCIATE PROFESSOR AVERAGE SALARY (\$): BY REGION (9R)

DEFINITION: The average salary for associate professors equated to a 9-month contract.

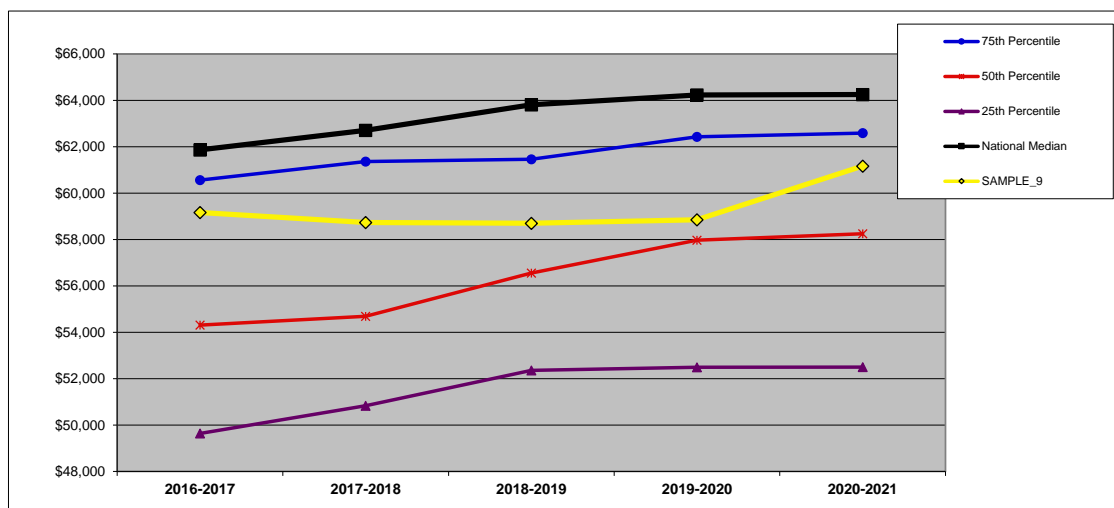
	2016-2017	2017-2018	2018-2019	2019-2020	2020-2021	Y1 to Y5 Change
SAMPLE_9	\$ 59,160	\$ 58,735	\$ 58,700	\$ 58,851	\$ 61,166	3.4%

NATIONAL (n=666). All data on this chart are presented as medians. See Introduction for description of regions.



	2016-2017	2017-2018	2018-2019	2019-2020	2020-2021	Y1 to Y5 Change
Far West (56)	\$ 72,841	\$ 72,098	\$ 74,712	\$ 75,414	\$ 79,037	8.5%
Mid East (125)	\$ 72,442	\$ 72,430	\$ 73,438	\$ 74,305	\$ 73,322	1.2%
Midwest (183)	\$ 60,754	\$ 61,271	\$ 61,905	\$ 62,926	\$ 62,620	3.1%
New England (63)	\$ 77,868	\$ 78,529	\$ 79,311	\$ 82,639	\$ 78,895	1.3%
Southeast (166)	\$ 56,538	\$ 57,377	\$ 58,091	\$ 57,191	\$ 57,785	2.2%
West (73)	\$ 54,308	\$ 54,686	\$ 56,554	\$ 57,969	\$ 58,247	7.3%
National Median	\$ 61,864	\$ 62,706	\$ 63,811	\$ 64,228	\$ 64,250	3.9%

WEST REGION (n=73). In addition to the median, which is the 50th percentile, this chart shows the 75th and 25th percentiles for the region.



	2016-2017	2017-2018	2018-2019	2019-2020	2020-2021	Y1 to Y5 Change
75th Percentile	\$ 60,560	\$ 61,362	\$ 61,463	\$ 62,429	\$ 62,586	3.3%
50th Percentile	\$ 54,308	\$ 54,686	\$ 56,554	\$ 57,969	\$ 58,247	7.3%
25th Percentile	\$ 49,638	\$ 50,833	\$ 52,356	\$ 52,495	\$ 52,498	5.8%
National Median	\$ 61,864	\$ 62,706	\$ 63,811	\$ 64,228	\$ 64,250	3.9%
SAMPLE_9	\$ 59,160	\$ 58,735	\$ 58,700	\$ 58,851	\$ 61,166	3.4%

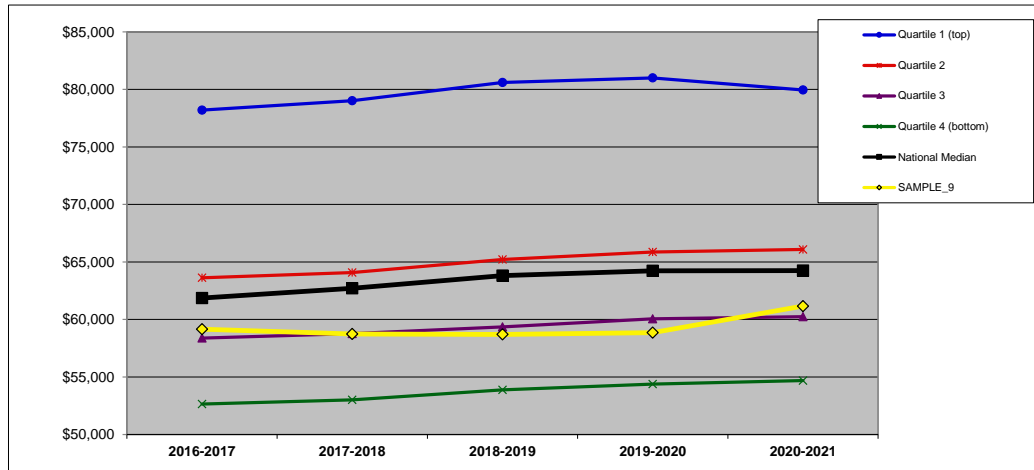
ASSOCIATE PROFESSOR AVERAGE SALARY (\$): BY FINANCIAL RESOURCES (9F)

DEFINITION: The average salary for associate professors equated to a 9-month contract. (All national and regional data are presented as medians.)

	2016-2017	2017-2018	2018-2019	2019-2020	2020-2021	Y1 to Y5 Change
SAMPLE_9	\$ 59,160	\$ 58,735	\$ 58,700	\$ 58,851	\$ 61,166	3.4%

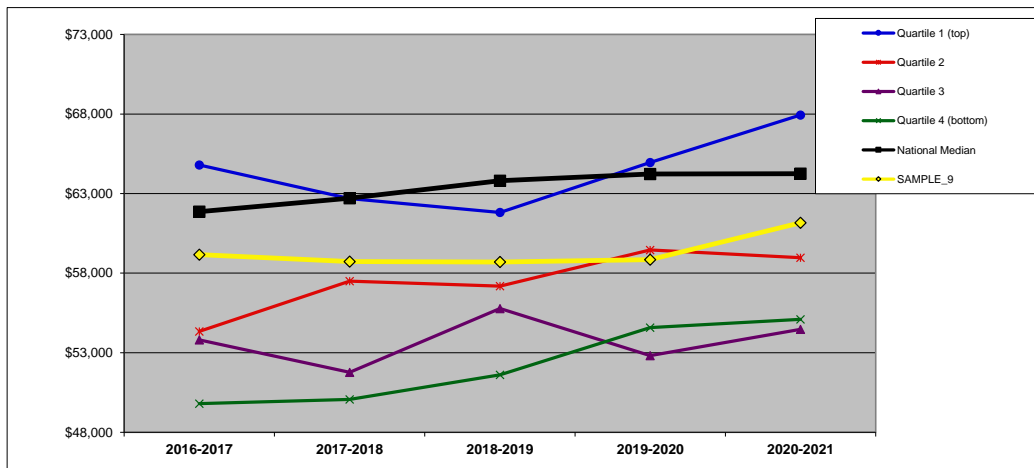
QUARTILES	
NATIONAL	3
REGIONAL	3

NATIONAL: FINANCIAL RESOURCES (n=658).



	2016-2017	2017-2018	2018-2019	2019-2020	2020-2021	Y1 to Y5 Change
Quartile 1 (top)	\$ 78,201	\$ 79,020	\$ 80,608	\$ 80,997	\$ 79,959	2.2%
Quartile 2	\$ 63,624	\$ 64,083	\$ 65,207	\$ 65,867	\$ 66,089	3.9%
Quartile 3	\$ 58,383	\$ 58,773	\$ 59,349	\$ 60,054	\$ 60,244	3.2%
Quartile 4 (bottom)	\$ 52,651	\$ 53,012	\$ 53,878	\$ 54,392	\$ 54,692	3.9%
National Median	\$ 61,864	\$ 62,706	\$ 63,811	\$ 64,228	\$ 64,250	3.9%
SAMPLE_9	\$ 59,160	\$ 58,735	\$ 58,700	\$ 58,851	\$ 61,166	3.4%

WEST REGION: FINANCIAL RESOURCES (n=73).



	2016-2017	2017-2018	2018-2019	2019-2020	2020-2021	Y1 to Y5 Change
Quartile 1 (top)	\$ 64,793	\$ 62,682	\$ 61,813	\$ 64,951	\$ 67,938	4.9%
Quartile 2	\$ 54,342	\$ 57,496	\$ 57,184	\$ 59,459	\$ 58,972	8.5%
Quartile 3	\$ 53,807	\$ 51,770	\$ 55,779	\$ 52,815	\$ 54,475	1.2%
Quartile 4 (bottom)	\$ 49,803	\$ 50,064	\$ 51,611	\$ 54,576	\$ 55,099	10.6%
National Median	\$ 61,864	\$ 62,706	\$ 63,811	\$ 64,228	\$ 64,250	3.9%
SAMPLE_9	\$ 59,160	\$ 58,735	\$ 58,700	\$ 58,851	\$ 61,166	3.4%

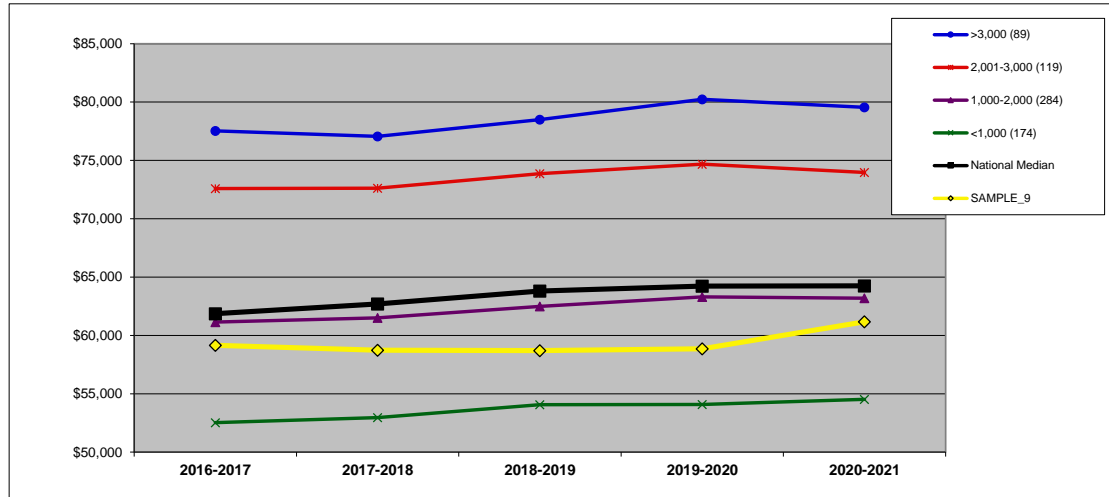
ASSOCIATE PROFESSOR AVERAGE SALARY (\$): BY ENROLLMENT SIZE (9S)

DEFINITION: The average salary for associate professors equated to a 9-month contract. (All national and regional data are presented as medians.)

	2016-2017	2017-2018	2018-2019	2019-2020	2020-2021	Y1 to Y5 Change
SAMPLE_9	\$ 59,160	\$ 58,735	\$ 58,700	\$ 58,851	\$ 61,166	3.4%

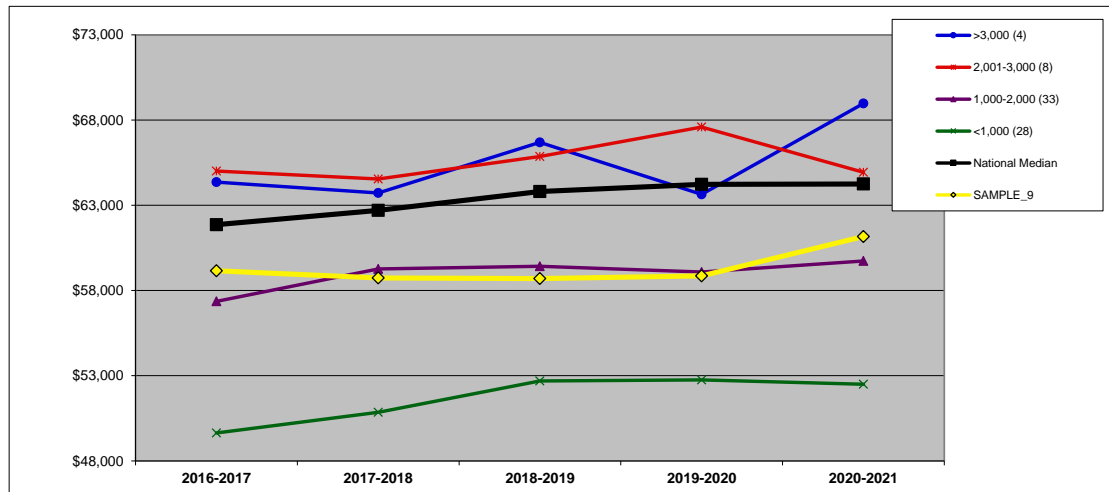
SIZE 1,000-2,000

NATIONAL: SIZE (n=666).



	2016-2017	2017-2018	2018-2019	2019-2020	2020-2021	Y1 to Y5 Change
>3,000 (89)	\$ 77,532	\$ 77,060	\$ 78,489	\$ 80,237	\$ 79,558	2.6%
2,001-3,000 (119)	\$ 72,589	\$ 72,619	\$ 73,865	\$ 74,679	\$ 73,975	1.9%
1,000-2,000 (284)	\$ 61,143	\$ 61,505	\$ 62,494	\$ 63,304	\$ 63,184	3.3%
<1,000 (174)	\$ 52,524	\$ 52,964	\$ 54,066	\$ 54,089	\$ 54,522	3.8%
National Median	\$ 61,864	\$ 62,706	\$ 63,811	\$ 64,228	\$ 64,250	3.9%
SAMPLE_9	\$ 59,160	\$ 58,735	\$ 58,700	\$ 58,851	\$ 61,166	3.4%

WEST REGION: SIZE (n=73).



	2016-2017	2017-2018	2018-2019	2019-2020	2020-2021	Y1 to Y5 Change
>3,000 (4)	\$ 64,355	\$ 63,726	\$ 66,695	\$ 63,641	\$ 68,975	7.2%
2,001-3,000 (8)	\$ 65,013	\$ 64,544	\$ 65,859	\$ 67,592	\$ 64,940	-0.1%
1,000-2,000 (33)	\$ 57,361	\$ 59,261	\$ 59,421	\$ 59,089	\$ 59,732	4.1%
<1,000 (28)	\$ 49,641	\$ 50,849	\$ 52,690	\$ 52,754	\$ 52,501	5.8%
National Median	\$ 61,864	\$ 62,706	\$ 63,811	\$ 64,228	\$ 64,250	3.9%
SAMPLE_9	\$ 59,160	\$ 58,735	\$ 58,700	\$ 58,851	\$ 61,166	3.4%

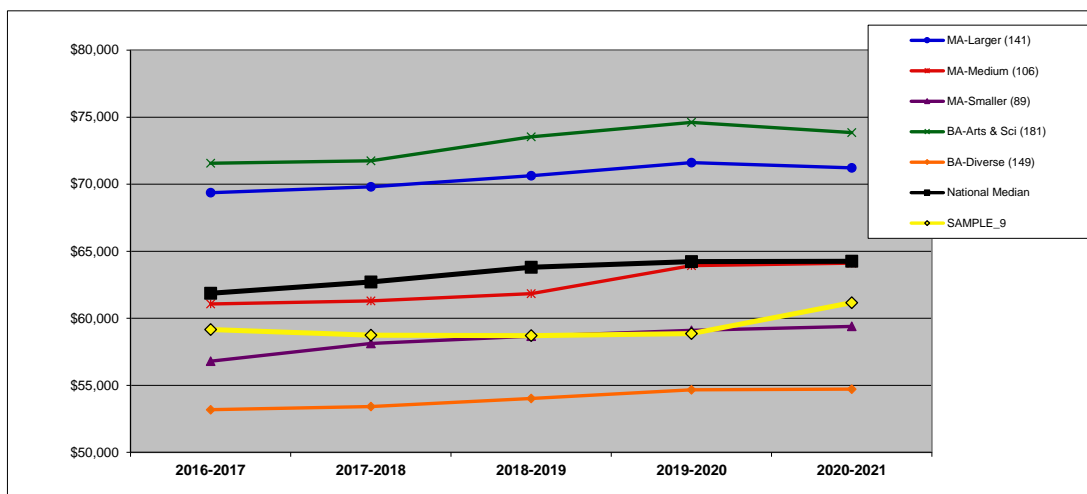
ASSOCIATE PROFESSOR AVERAGE SALARY (\$): BY CARNEGIE CLASSIFICATION (9C)

DEFINITION: The average salary for associate professors equated to a 9-month contract. See Introduction for information on the Carnegie classifications. (All national and regional data are presented as medians.)

	2016-2017	2017-2018	2018-2019	2019-2020	2020-2021	Change
SAMPLE 9	\$ 59,160	\$ 58,735	\$ 58,700	\$ 58,851	\$ 61,166	3.4%

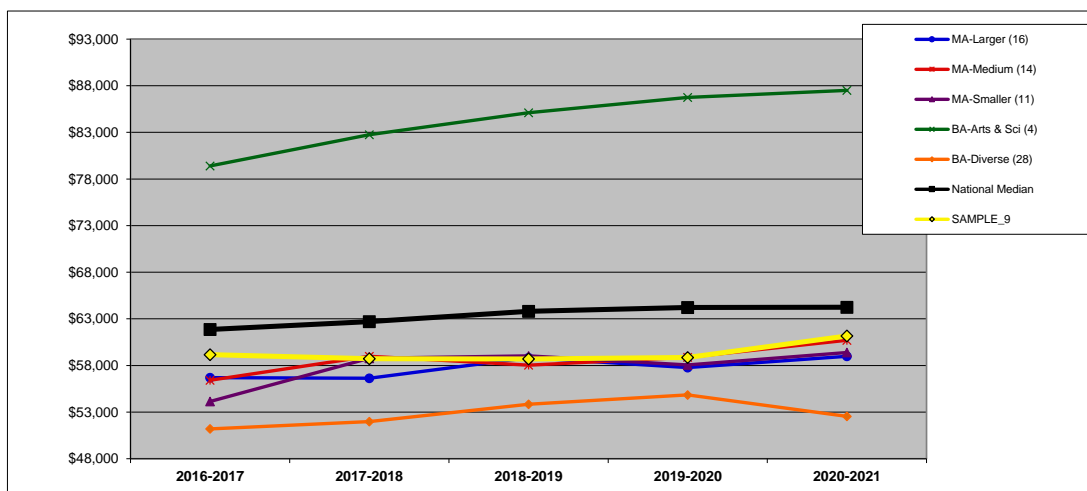
CARNEGIE MA-Medium

NATIONAL: CARNEGIE (n=666).



	2016-2017	2017-2018	2018-2019	2019-2020	2020-2021	Y1 to Y5 Change
MA-Larger (141)	\$ 69,365	\$ 69,805	\$ 70,632	\$ 71,612	\$ 71,216	2.7%
MA-Medium (106)	\$ 61,066	\$ 61,294	\$ 61,829	\$ 63,928	\$ 64,113	5.0%
MA-Smaller (89)	\$ 56,797	\$ 58,123	\$ 58,669	\$ 59,095	\$ 59,392	4.6%
BA-Arts & Sci (181)	\$ 71,563	\$ 71,748	\$ 73,543	\$ 74,612	\$ 73,849	3.2%
BA-Diverse (149)	\$ 53,180	\$ 53,415	\$ 54,014	\$ 54,668	\$ 54,714	2.9%
National Median	\$ 61,864	\$ 62,706	\$ 63,811	\$ 64,228	\$ 64,250	3.9%
SAMPLE 9	\$ 59,160	\$ 58,735	\$ 58,700	\$ 58,851	\$ 61,166	3.4%

WEST REGION: CARNEGIE (n=73).



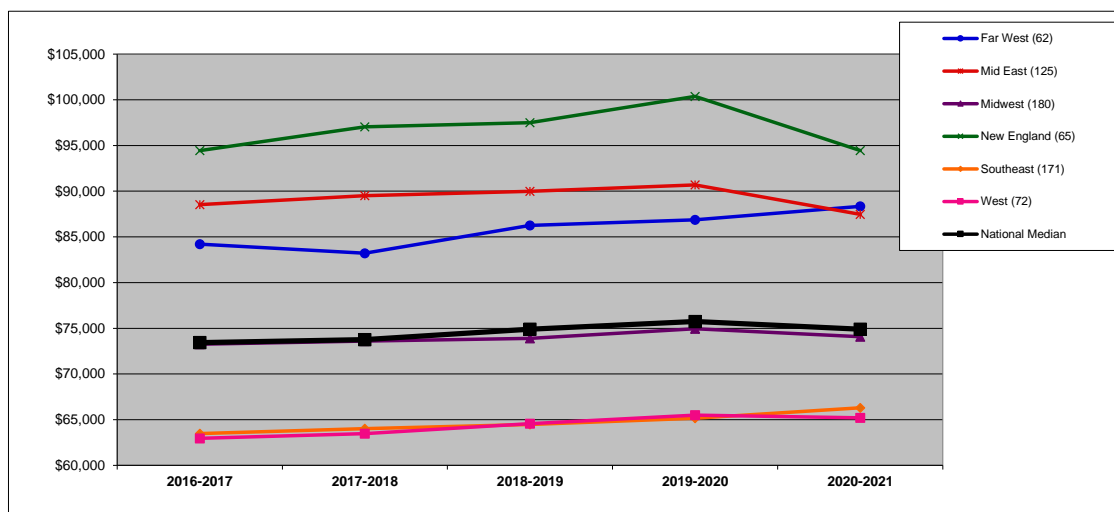
	2016-2017	2017-2018	2018-2019	2019-2020	2020-2021	Y1 to Y5 Change
MA-Larger (16)	\$ 56,700	\$ 56,631	\$ 58,839	\$ 57,769	\$ 58,986	4.0%
MA-Medium (14)	\$ 56,417	\$ 58,998	\$ 58,032	\$ 58,885	\$ 60,708	7.6%
MA-Smaller (11)	\$ 54,140	\$ 58,773	\$ 59,041	\$ 58,069	\$ 59,392	9.7%
BA-Arts & Sci (4)	\$ 79,402	\$ 82,743	\$ 85,117	\$ 86,745	\$ 87,506	10.2%
BA-Diverse (28)	\$ 51,198	\$ 51,975	\$ 53,848	\$ 54,849	\$ 52,538	2.6%
National Median	\$ 61,864	\$ 62,706	\$ 63,811	\$ 64,228	\$ 64,250	3.9%
SAMPLE 9	\$ 59,160	\$ 58,735	\$ 58,700	\$ 58,851	\$ 61,166	3.4%

FULL PROFESSOR AVERAGE SALARY (\$): BY REGION (10R)

DEFINITION: The average salary for full professors equated to a 9-month contract.

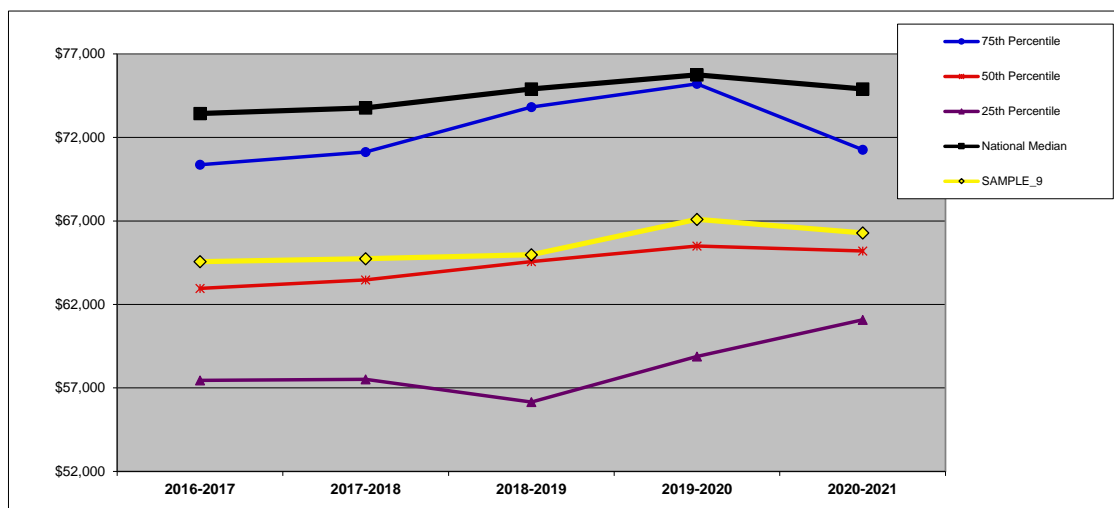
	2016-2017	2017-2018	2018-2019	2019-2020	2020-2021	Y1 to Y5 Change
SAMPLE_9	\$ 64,561	\$ 64,745	\$ 64,978	\$ 67,098	\$ 66,282	2.7%

NATIONAL (n=675). All data on this chart are presented as medians. See Introduction for description of regions.



	2016-2017	2017-2018	2018-2019	2019-2020	2020-2021	Y1 to Y5 Change
Far West (62)	\$ 84,216	\$ 83,216	\$ 86,246	\$ 86,874	\$ 88,344	4.9%
Mid East (125)	\$ 88,534	\$ 89,500	\$ 89,983	\$ 90,690	\$ 87,467	-1.2%
Midwest (180)	\$ 73,257	\$ 73,601	\$ 73,907	\$ 74,949	\$ 74,074	1.1%
New England (65)	\$ 94,440	\$ 97,038	\$ 97,498	\$ 100,375	\$ 94,444	0.0%
Southeast (171)	\$ 63,479	\$ 64,009	\$ 64,466	\$ 65,163	\$ 66,301	4.4%
West (72)	\$ 62,960	\$ 63,466	\$ 64,571	\$ 65,497	\$ 65,207	3.6%
National Median	\$ 73,431	\$ 73,765	\$ 74,897	\$ 75,747	\$ 74,898	2.0%

WEST REGION (n=72). In addition to the median, which is the 50th percentile, this chart shows the 75th and 25th percentiles for the region.



	2016-2017	2017-2018	2018-2019	2019-2020	2020-2021	Y1 to Y5 Change
75th Percentile	\$ 70,364	\$ 71,135	\$ 73,816	\$ 75,209	\$ 71,263	1.3%
50th Percentile	\$ 62,960	\$ 63,466	\$ 64,571	\$ 65,497	\$ 65,207	3.6%
25th Percentile	\$ 57,453	\$ 57,512	\$ 56,156	\$ 58,887	\$ 61,080	6.3%
National Median	\$ 73,431	\$ 73,765	\$ 74,897	\$ 75,747	\$ 74,898	2.0%
SAMPLE_9	\$ 64,561	\$ 64,745	\$ 64,978	\$ 67,098	\$ 66,282	2.7%

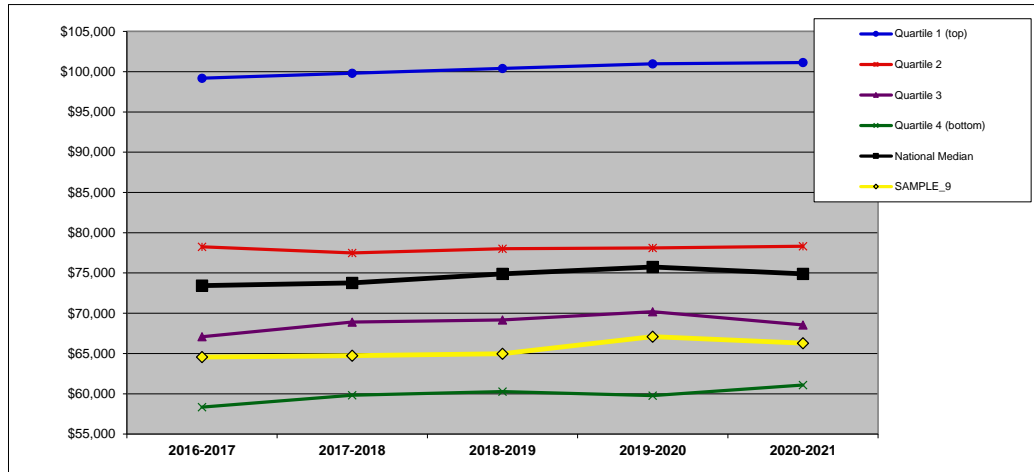
FULL PROFESSOR AVERAGE SALARY (\$): BY FINANCIAL RESOURCES (10F)

DEFINITION: The average salary for full professors equated to a 9-month contract. (All national and regional data are presented as medians.)

	2016-2017	2017-2018	2018-2019	2019-2020	2020-2021	Y1 to Y5 Change
SAMPLE_9	\$ 64,561	\$ 64,745	\$ 64,978	\$ 67,098	\$ 66,282	2.7%

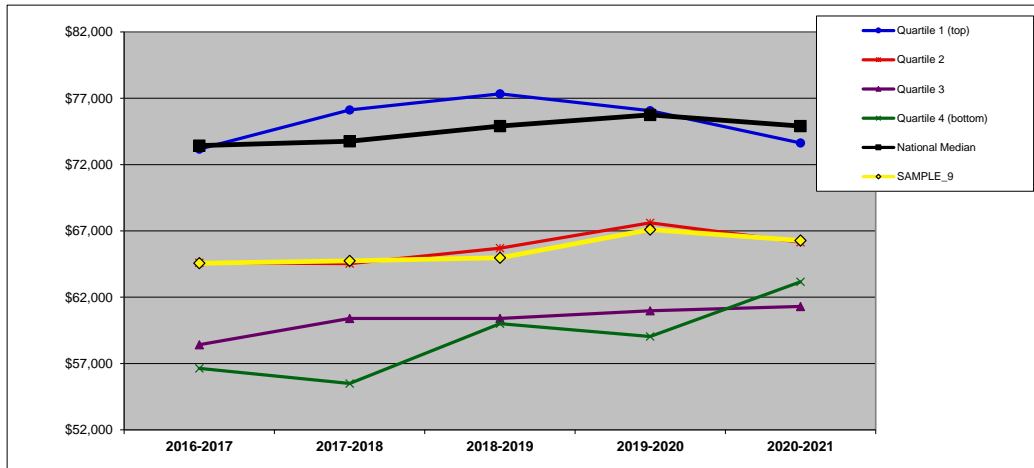
QUARTILES	
NATIONAL	3
REGIONAL	3

NATIONAL: FINANCIAL RESOURCES (n=666).



	2016-2017	2017-2018	2018-2019	2019-2020	2020-2021	Y1 to Y5 Change
Quartile 1 (top)	\$ 99,192	\$ 99,808	\$ 100,411	\$ 100,984	\$ 101,131	2.0%
Quartile 2	\$ 78,254	\$ 77,491	\$ 78,021	\$ 78,113	\$ 78,324	0.1%
Quartile 3	\$ 67,084	\$ 68,907	\$ 69,168	\$ 70,194	\$ 68,539	2.2%
Quartile 4 (bottom)	\$ 58,347	\$ 59,833	\$ 60,270	\$ 59,779	\$ 61,092	4.7%
National Median	\$ 73,431	\$ 73,765	\$ 74,897	\$ 75,747	\$ 74,898	2.0%
SAMPLE_9	\$ 64,561	\$ 64,745	\$ 64,978	\$ 67,098	\$ 66,282	2.7%

WEST REGION: FINANCIAL RESOURCES (n=72).



	2016-2017	2017-2018	2018-2019	2019-2020	2020-2021	Y1 to Y5 Change
Quartile 1 (top)	\$ 73,165	\$ 76,125	\$ 77,334	\$ 76,060	\$ 73,628	0.6%
Quartile 2	\$ 64,595	\$ 64,532	\$ 65,692	\$ 67,609	\$ 66,145	2.4%
Quartile 3	\$ 58,417	\$ 60,402	\$ 60,402	\$ 60,975	\$ 61,302	4.9%
Quartile 4 (bottom)	\$ 56,636	\$ 55,496	\$ 60,000	\$ 59,040	\$ 63,161	11.5%
National Median	\$ 73,431	\$ 73,765	\$ 74,897	\$ 75,747	\$ 74,898	2.0%
SAMPLE_9	\$ 64,561	\$ 64,745	\$ 64,978	\$ 67,098	\$ 66,282	2.7%

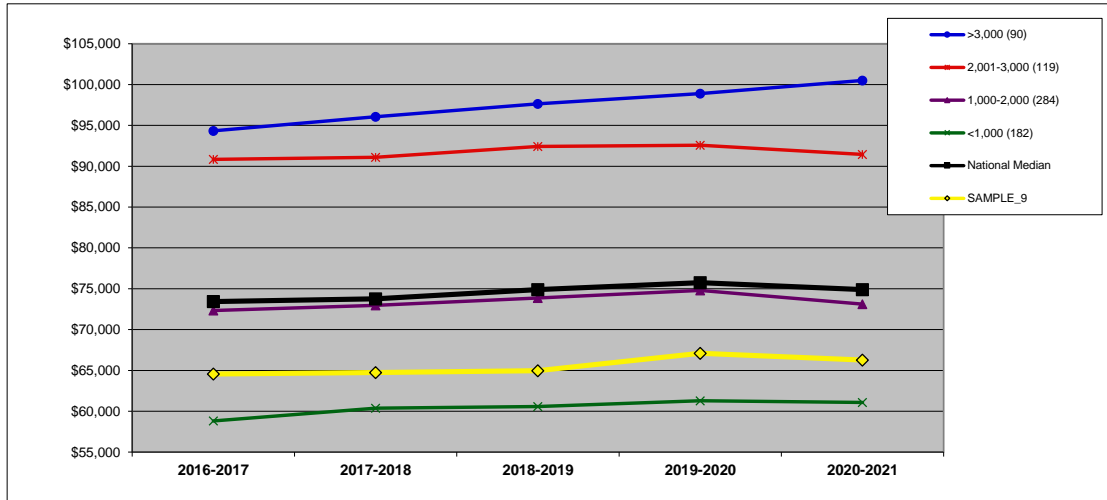
FULL PROFESSOR AVERAGE SALARY (\$): BY ENROLLMENT SIZE (10S)

DEFINITION: The average salary for full professors equated to a 9-month contract. (All national and regional data are presented as medians.)

	2016-2017	2017-2018	2018-2019	2019-2020	2020-2021	Y1 to Y5 Change
SAMPLE_9	\$ 64,561	\$ 64,745	\$ 64,978	\$ 67,098	\$ 66,282	2.7%

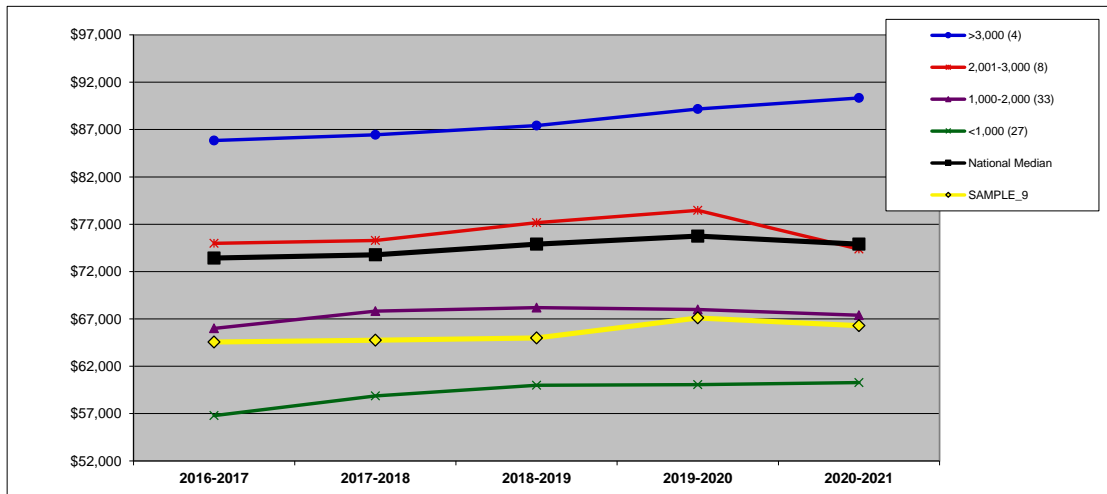
SIZE 1,000-2,000

NATIONAL: SIZE (n=675).



	2016-2017	2017-2018	2018-2019	2019-2020	2020-2021	Y1 to Y5 Change
>3,000 (90)	\$ 94,334	\$ 96,073	\$ 97,650	\$ 98,887	\$ 100,507	6.5%
2,001-3,000 (119)	\$ 90,840	\$ 91,095	\$ 92,428	\$ 92,576	\$ 91,456	0.7%
1,000-2,000 (284)	\$ 72,334	\$ 72,964	\$ 73,875	\$ 74,799	\$ 73,113	1.1%
<1,000 (182)	\$ 58,813	\$ 60,366	\$ 60,567	\$ 61,288	\$ 61,074	3.8%
National Median	\$ 73,431	\$ 73,765	\$ 74,897	\$ 75,747	\$ 74,898	2.0%
SAMPLe_9	\$ 64,561	\$ 64,745	\$ 64,978	\$ 67,098	\$ 66,282	2.7%

WEST REGION: SIZE (n=72).



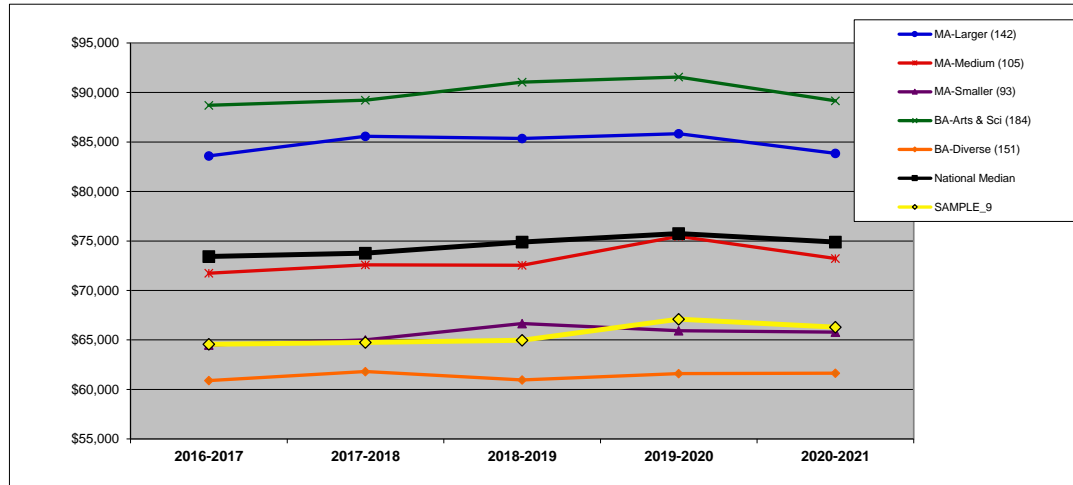
	2016-2017	2017-2018	2018-2019	2019-2020	2020-2021	Y1 to Y5 Change
>3,000 (4)	\$ 85,844	\$ 86,443	\$ 87,428	\$ 89,177	\$ 90,335	5.2%
2,001-3,000 (8)	\$ 74,976	\$ 75,281	\$ 77,166	\$ 78,465	\$ 74,372	-0.8%
1,000-2,000 (33)	\$ 65,996	\$ 67,824	\$ 68,191	\$ 67,995	\$ 67,387	2.1%
<1,000 (27)	\$ 56,786	\$ 58,858	\$ 60,000	\$ 60,049	\$ 60,276	6.1%
National Median	\$ 73,431	\$ 73,765	\$ 74,897	\$ 75,747	\$ 74,898	2.0%
SAMPLe_9	\$ 64,561	\$ 64,745	\$ 64,978	\$ 67,098	\$ 66,282	2.7%

FULL PROFESSOR AVERAGE SALARY (\$): BY CARNEGIE CLASSIFICATION (10C)

DEFINITION: The average salary for full professors equated to a 9-month contract. See Introduction for information on the Carnegie classifications. (All national and regional data are presented as medians.)

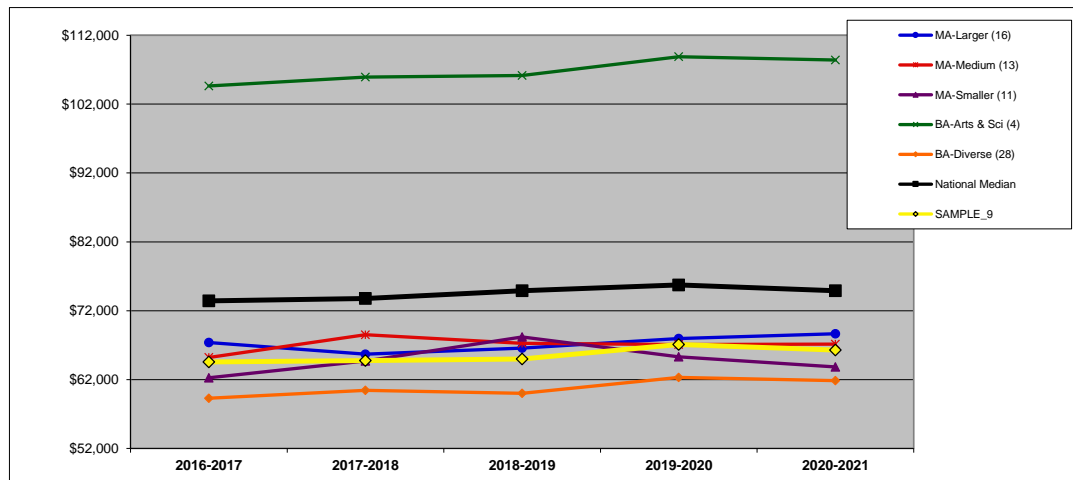
	2016-2017	2017-2018	2018-2019	2019-2020	2020-2021	Y1 to Y5 Change
SAMPLE_9	\$ 64,561	\$ 64,745	\$ 64,978	\$ 67,098	\$ 66,282	2.7%
CARNEGIE	MA-Medium					

NATIONAL: CARNEGIE (n=675).



	2016-2017	2017-2018	2018-2019	2019-2020	2020-2021	Y1 to Y5 Change
MA-Larger (142)	\$ 83,591	\$ 85,572	\$ 85,343	\$ 85,834	\$ 83,844	0.3%
MA-Medium (105)	\$ 71,741	\$ 72,585	\$ 72,550	\$ 75,469	\$ 73,221	2.1%
MA-Smaller (93)	\$ 64,495	\$ 65,018	\$ 66,657	\$ 65,927	\$ 65,793	2.0%
BA-Arts & Sci (184)	\$ 88,707	\$ 89,215	\$ 91,052	\$ 91,559	\$ 89,169	0.5%
BA-Diverse (151)	\$ 60,896	\$ 61,810	\$ 60,962	\$ 61,611	\$ 61,641	1.2%
National Median	\$ 73,431	\$ 73,765	\$ 74,897	\$ 75,747	\$ 74,898	2.0%
SAMPLE_9	\$ 64,561	\$ 64,745	\$ 64,978	\$ 67,098	\$ 66,282	2.7%

WEST REGION: CARNEGIE (n=72).



	2016-2017	2017-2018	2018-2019	2019-2020	2020-2021	Y1 to Y5 Change
MA-Larger (16)	\$ 67,391	\$ 65,692	\$ 66,561	\$ 67,959	\$ 68,653	1.9%
MA-Medium (13)	\$ 65,209	\$ 68,515	\$ 67,264	\$ 67,098	\$ 67,162	3.0%
MA-Smaller (11)	\$ 62,260	\$ 64,706	\$ 68,191	\$ 65,317	\$ 63,832	2.5%
BA-Arts & Sci (4)	\$ 104,639	\$ 105,940	\$ 106,170	\$ 108,886	\$ 108,419	3.6%
BA-Diverse (28)	\$ 59,288	\$ 60,445	\$ 60,015	\$ 62,313	\$ 61,860	4.3%
National Median	\$ 73,431	\$ 73,765	\$ 74,897	\$ 75,747	\$ 74,898	2.0%
SAMPLE_9	\$ 64,561	\$ 64,745	\$ 64,978	\$ 67,098	\$ 66,282	2.7%

DATA INFORMATION: DEFINITIONS, IPEDS SOURCES, AND FORMULAS

To use this appendix, visit <http://nces.ed.gov/ipeds/datacenter/> and follow these steps:

- select "Compare Institutions"
- enter your institution's name
- select "Continue" to see variables

1) TOTAL FALL ENROLLMENT

Definition: Total fall full-time equivalent (FTE) enrollment, including undergraduate, graduate, and first-professional students.

IPEDS: Frequently used/Derived variables
Fall enrollment/retention rates
Total, full- and part-time enrollment and fall FTE
Full-time equivalent enrollment (Fall enrollment derivation)

2) FIRST-YEAR ENROLLMENT

Definition: Total fall full-time, first-time degree-seeking undergraduate students.

IPEDS: Fall Enrollment
Gender, attendance status, and level of student
Fall 1980, Fall 1984 to current year
Qualifying variable: First time
Full time total

3) ADMISSIONS YIELD RATE (%)

Definition: Percentage of admitted students who enrolled.

IPEDS: Admissions and Test Scores
Admissions and test scores
Number of applications, admissions, and enrollees
Admissions total
Enrolled total

Formula:
$$\frac{\text{Enrolled total}}{\text{Admissions total}}$$

4) RETENTION RATE (%)

Definition: The first to second year retention rate is the percentage of the fall full-time cohort (minus exclusions) that re-enrolled at the institution as either full- or part-time students in the fall of the next year.

IPEDS: Retention rates, Entering Class and Student to faculty ratio
Retention rates
Fall 2003 to current year
Full-time retention rate

5) GRADUATION RATE (%)

Definition: The six-year, cohort graduation rate for full-time, first-time degree-seeking undergraduate students. For example, the Fall 2013 Cohort rate is the percentage that graduated by end of Summer 2019.

IPEDS: Graduation Rates
Graduation rate data within 150 percent of normal time - 4-year and 2-year institutions
Gender - 1997 to current year
Qualifying variables: Bachelor's or equivalent degree/certificate-seeking subcohort (4-year institutions); select both Adjusted cohort (revised cohort minus exclusions) and Completers within 150% of normal time total
Grand total

Formula:
$$\frac{\text{Completers within 150\% of normal time}}{\text{Adjusted Cohort (revised cohort minus exclusions)}}$$

6) STUDENT/FACULTY RATIO

Definition: Total fall full-time equivalent (FTE) enrollment, including undergraduate, graduate, and first-professional students, divided by instructional faculty FTE.

IPEDS: Frequently used/Derived variables
Average salaries and full-time equivalent staff
Full-time equivalent staff by occupational category: 2012-13 to current year (new HR occupational categories based on SOC 2010)
Instructional, research and public service FTE staff

Frequently used/Derived variables
Fall enrollment/retention rates
Total, full- and part-time enrollment and fall FTE
Full-time equivalent enrollment (Fall enrollment derivation)

Formula:
$$\frac{\text{Full-time equivalent enrollment (Fall enrollment derivation)}}{\text{Instructional, research and public service FTE staff}}$$

7) PART-TIME FACULTY (%)

Definition: Full-time equivalent (FTE) for part-time instructional faculty as a percentage of total instructional faculty FTE.

IPEDS: Human Resources
Full- and part-time medical and non-medical staff by occupational category, faculty and tenure status
New HR occupational categories based on SOC 2010
Qualifying variable: Instructional, research and public service
Part-time employees

Frequently used/Derived variables
Average salaries and full-time equivalent staff
Full-time equivalent staff by occupational category: 2012-13 to current year (new HR occupational categories based on SOC 2010)
Instructional, research and public service FTE staff

Formula:
$$\frac{(\text{Part-time employees} / 3)}{\text{Instructional, research and public service FTE staff}}$$

8) ASSISTANT PROFESSOR AVERAGE SALARY (\$)

Definition: The average salary for assistant professors equated to a 9-month contract.

IPEDS: Frequently used/Derived variables

Average salaries and full-time equivalent staff

Average salaries of full-time non-medical instructional staff equated to 9-month contracts, by academic rank: 2012-13 to current year

Average salary equated to 9 months of full-time instructional staff - assistant professors

9) ASSOCIATE PROFESSOR AVERAGE SALARY (\$)

Definition: The average salary for associate professors equated to a 9-month contract.

IPEDS: Frequently used/Derived variables

Average salaries and full-time equivalent staff

Average salaries of full-time non-medical instructional staff equated to 9-month contracts, by academic rank: 2012-13 to current year

Average salary equated to 9 months of full-time instructional staff - associate professors

10) FULL PROFESSOR AVERAGE SALARY (\$)

Definition: The average salary for full professors equated to a 9-month contract.

IPEDS: Frequently used/Derived variables

Average salaries and full-time equivalent staff

Average salaries of full-time non-medical instructional staff equated to 9-month contracts, by academic rank: 2012-13 to current year

Average salary equated to 9 months of full-time instructional staff - professors